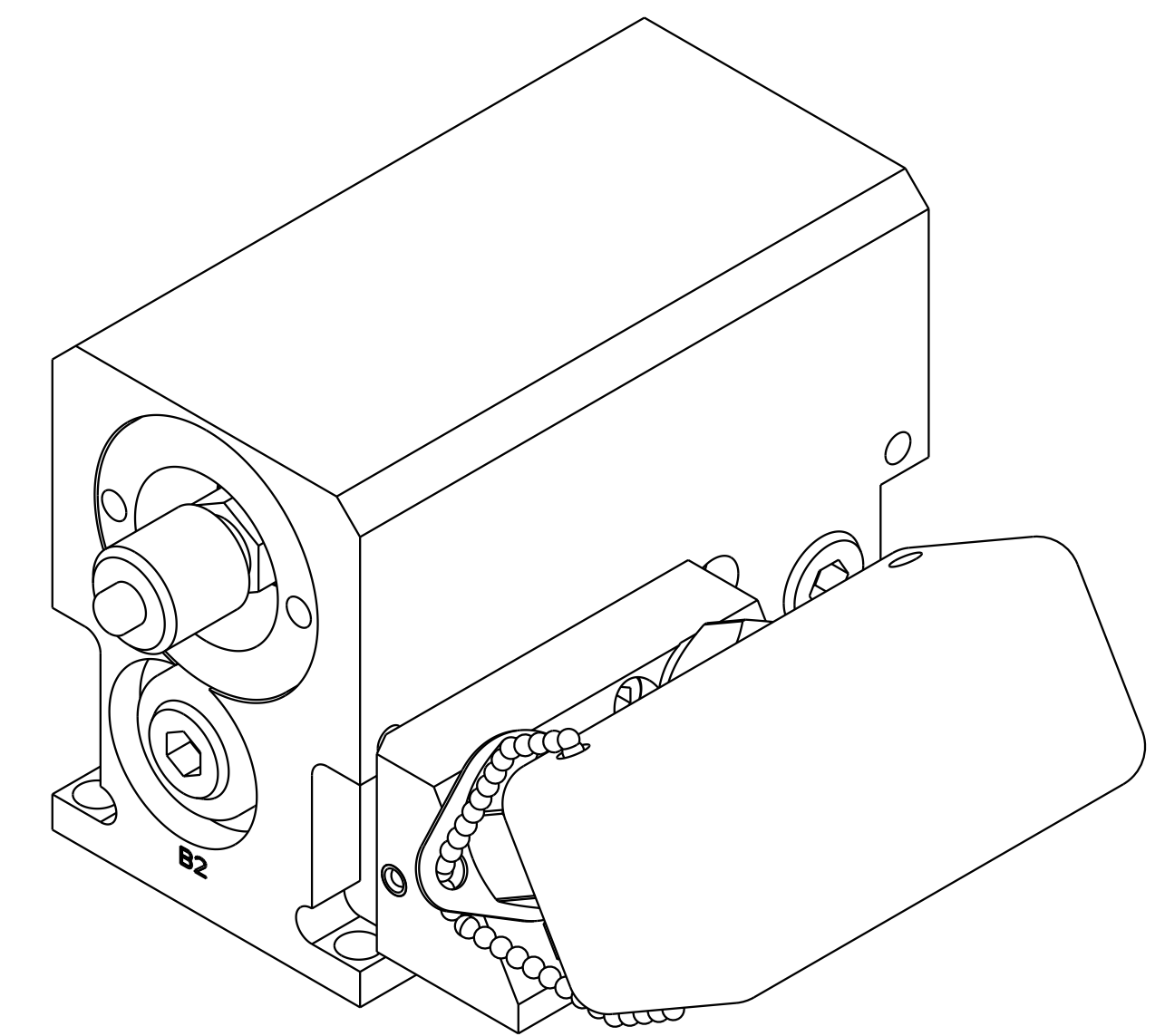
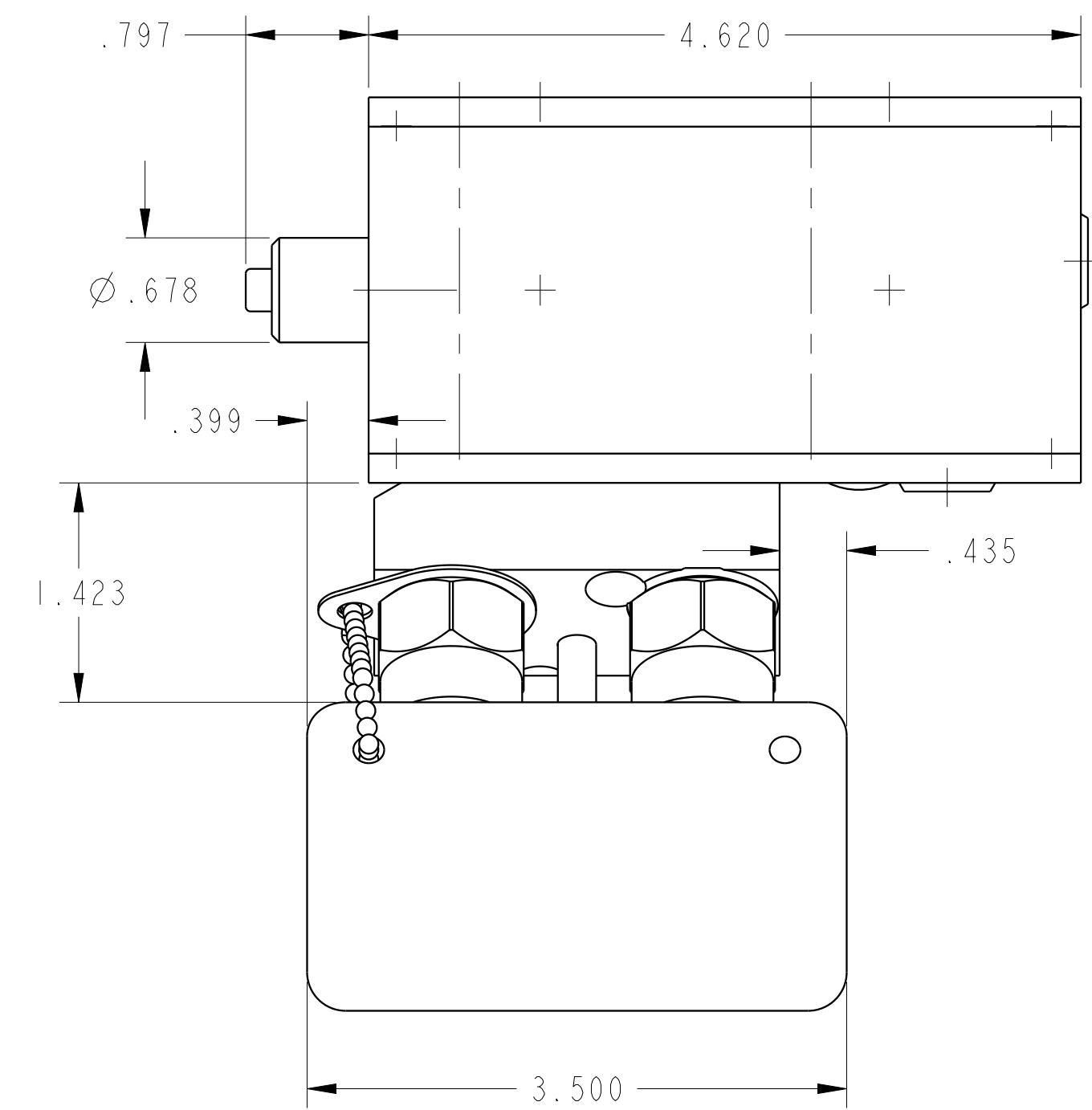


1

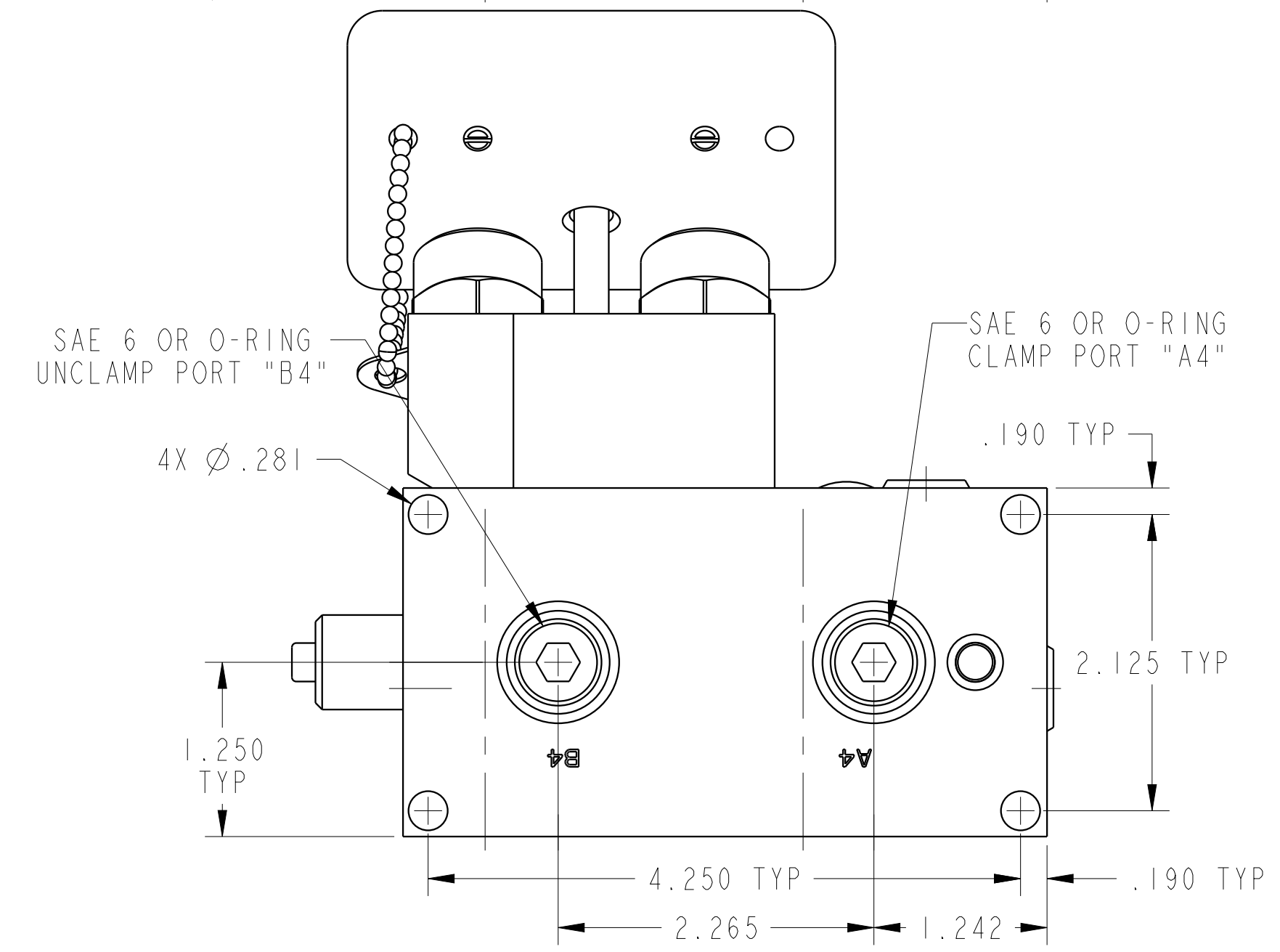
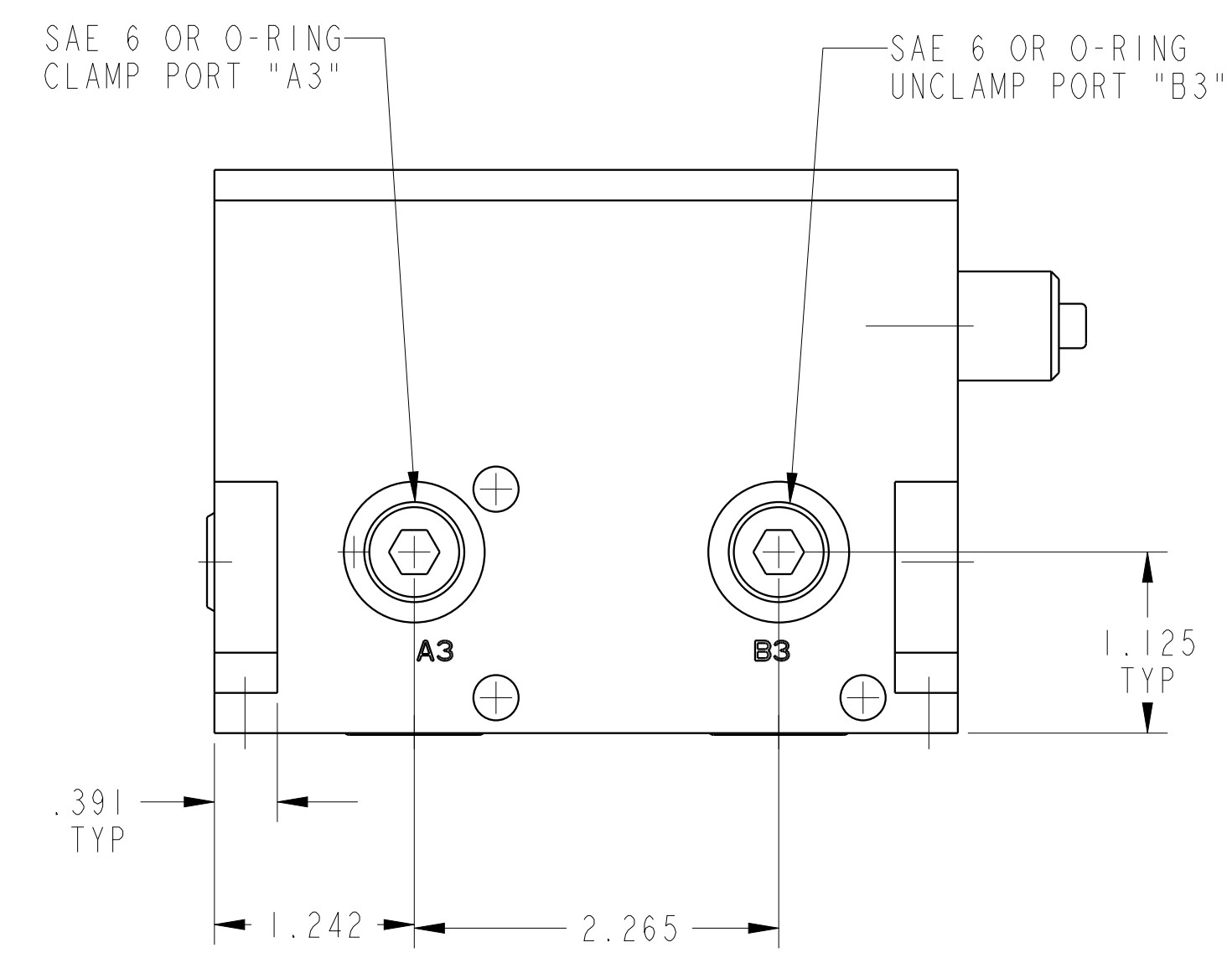
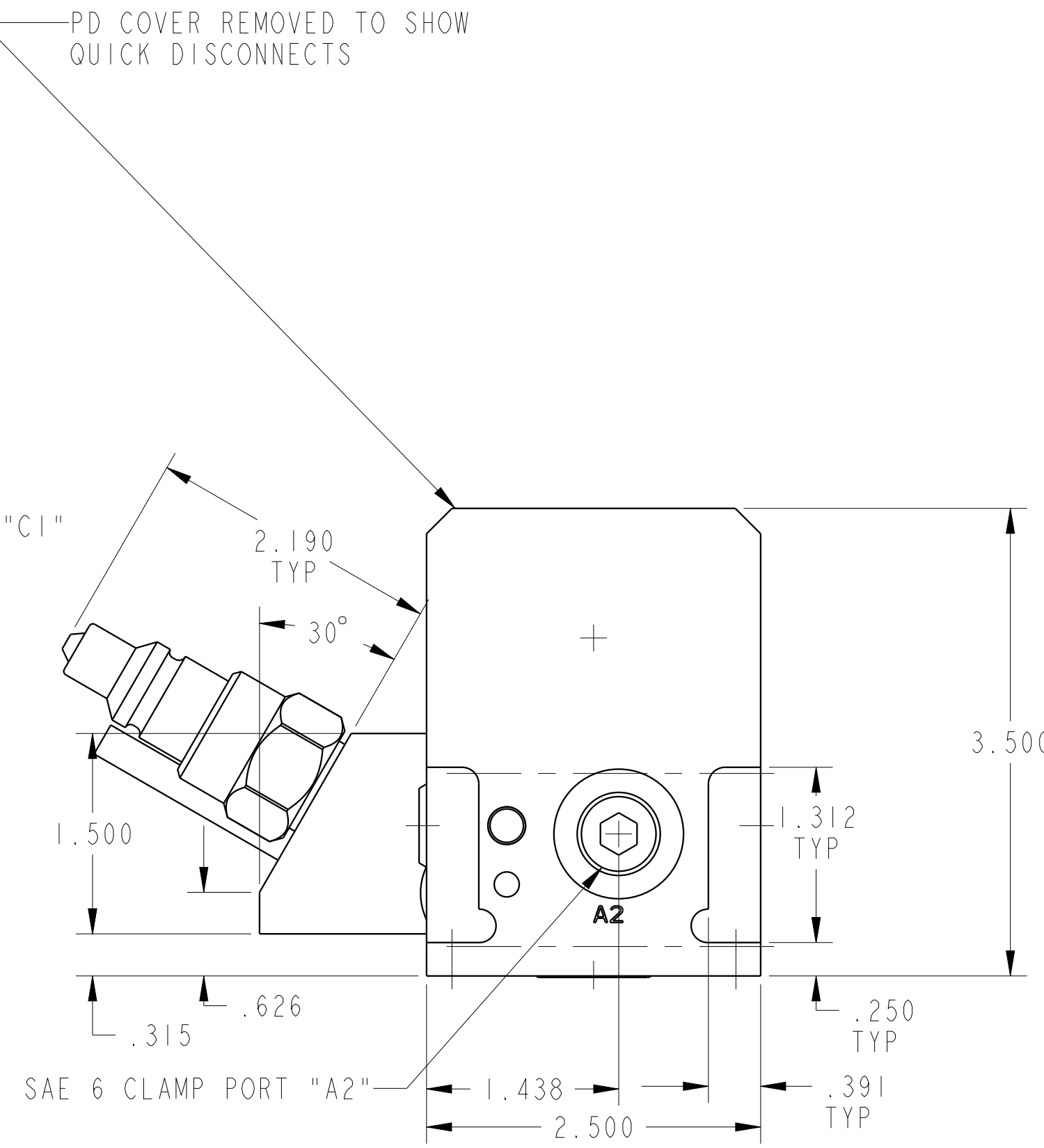
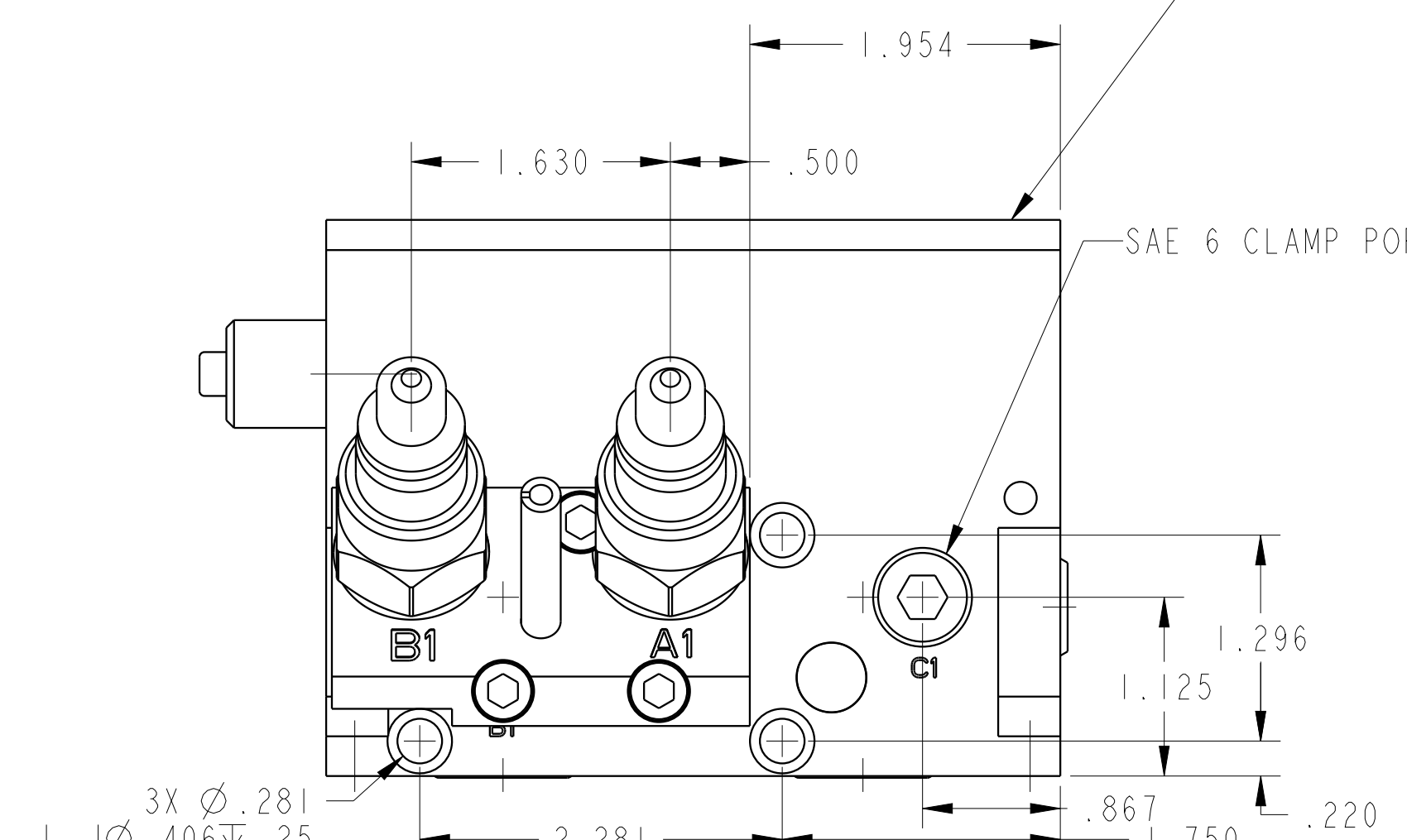
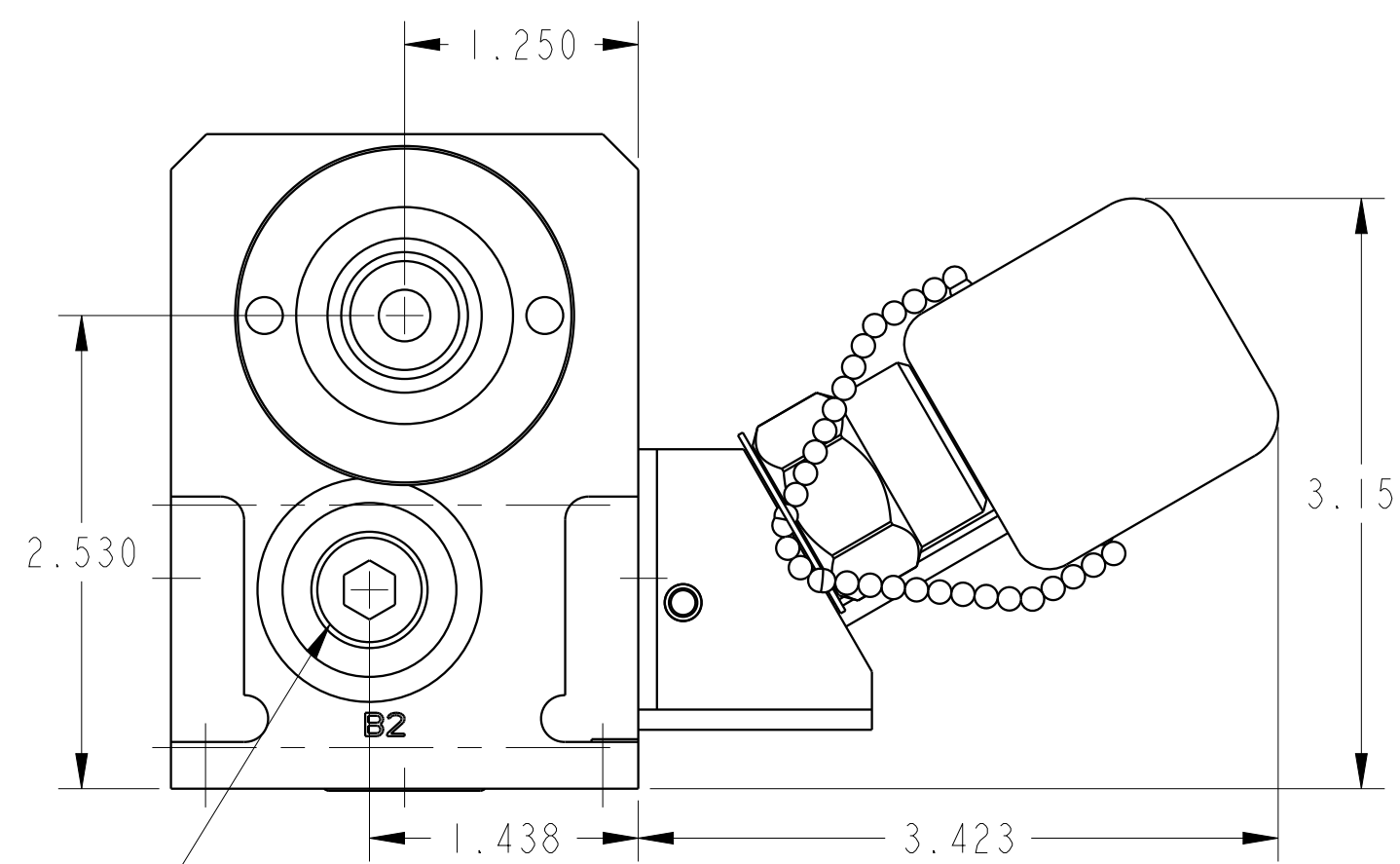
2

3

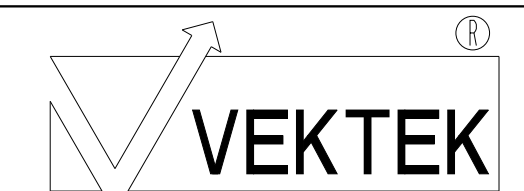
4



ILC56000524 REV C ECN4131



CAD CONTROL DRAWING



VEKTEK, INC.  
1334 E. SIXTH AVE. P.O. BOX 625  
EMPORIA, KS. 66801 U.S.A.

C	4131	RELEASE	NPETERS	3/16/20
REV	IN ACCORDANCE WITH ECN	EFFECTIVE DATE	REVISED BY	DATE
DRW BY:	DRAWING STATUS: Released			
DATE:	PRODUCTION APPROVED FOR RELEASED STATUS ONLY			

56000524	F	PD, IH, DUAL, 5000, INT ACC
REFERENCE MODEL	REF REV	*****
TOLERANCES DO NOT APPLY		SIZE
DIMENSIONS ARE NOMINAL		D

ILC56000524	REV C
FORM FEG036, Rev. B	