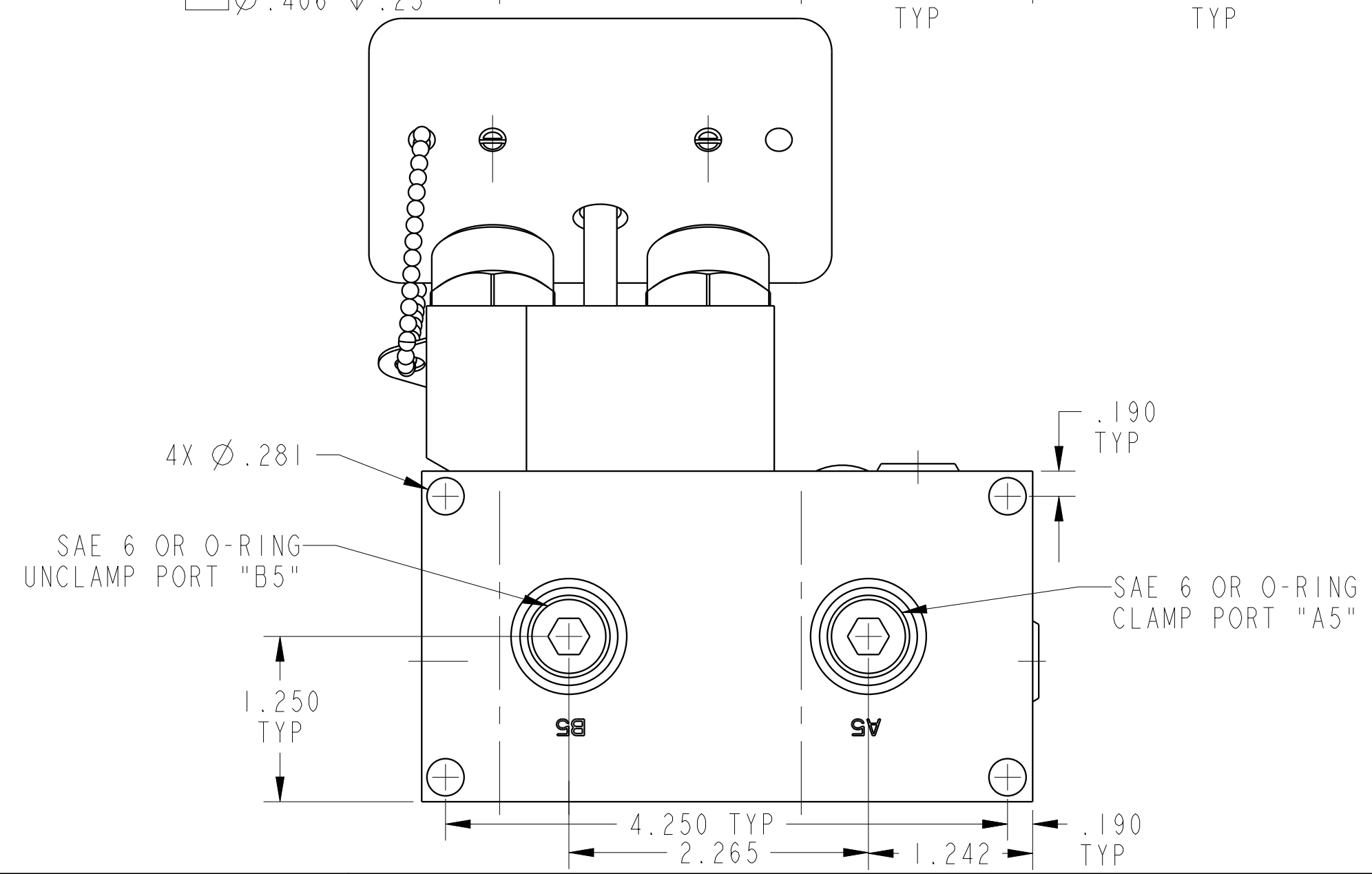
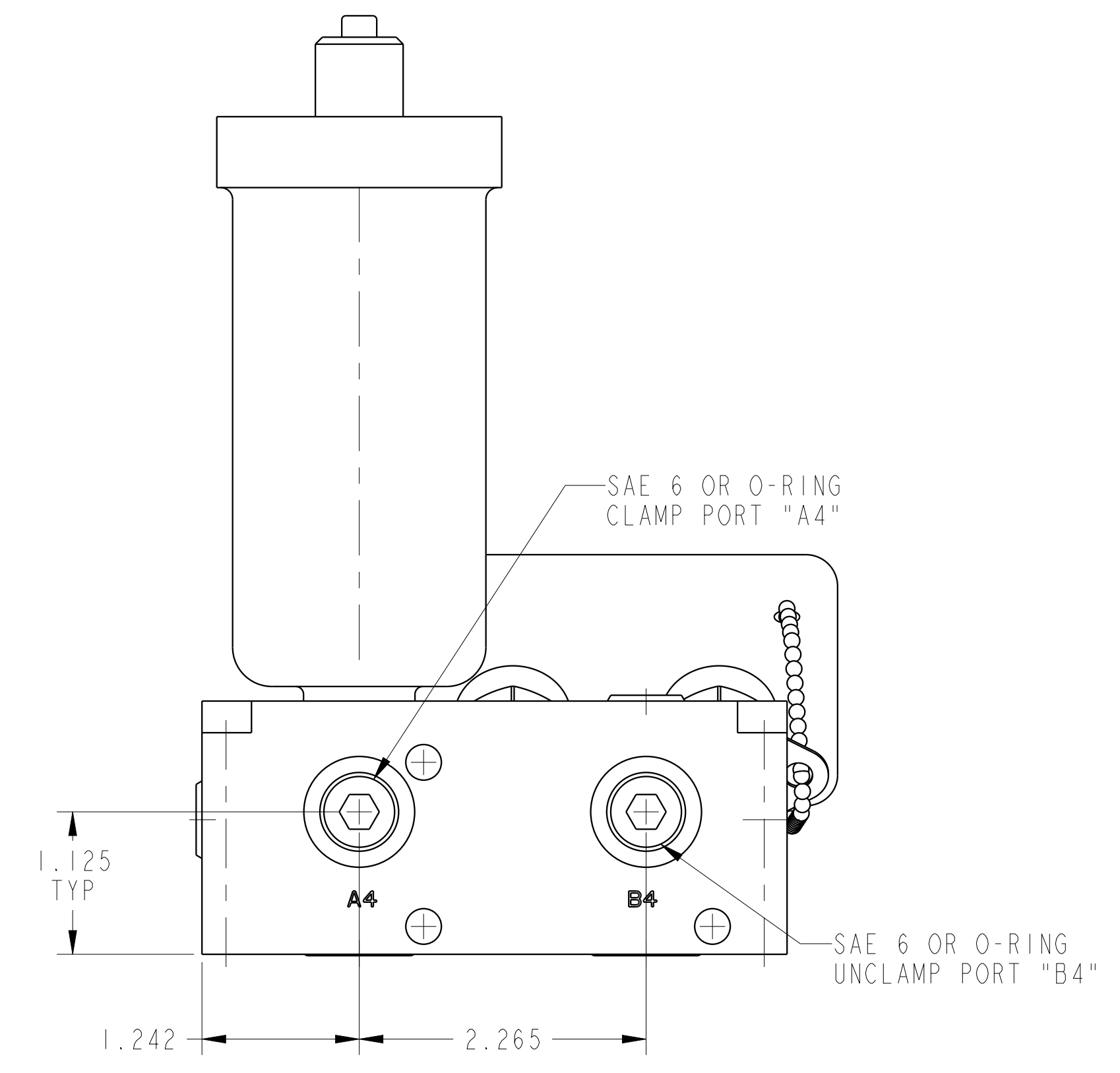
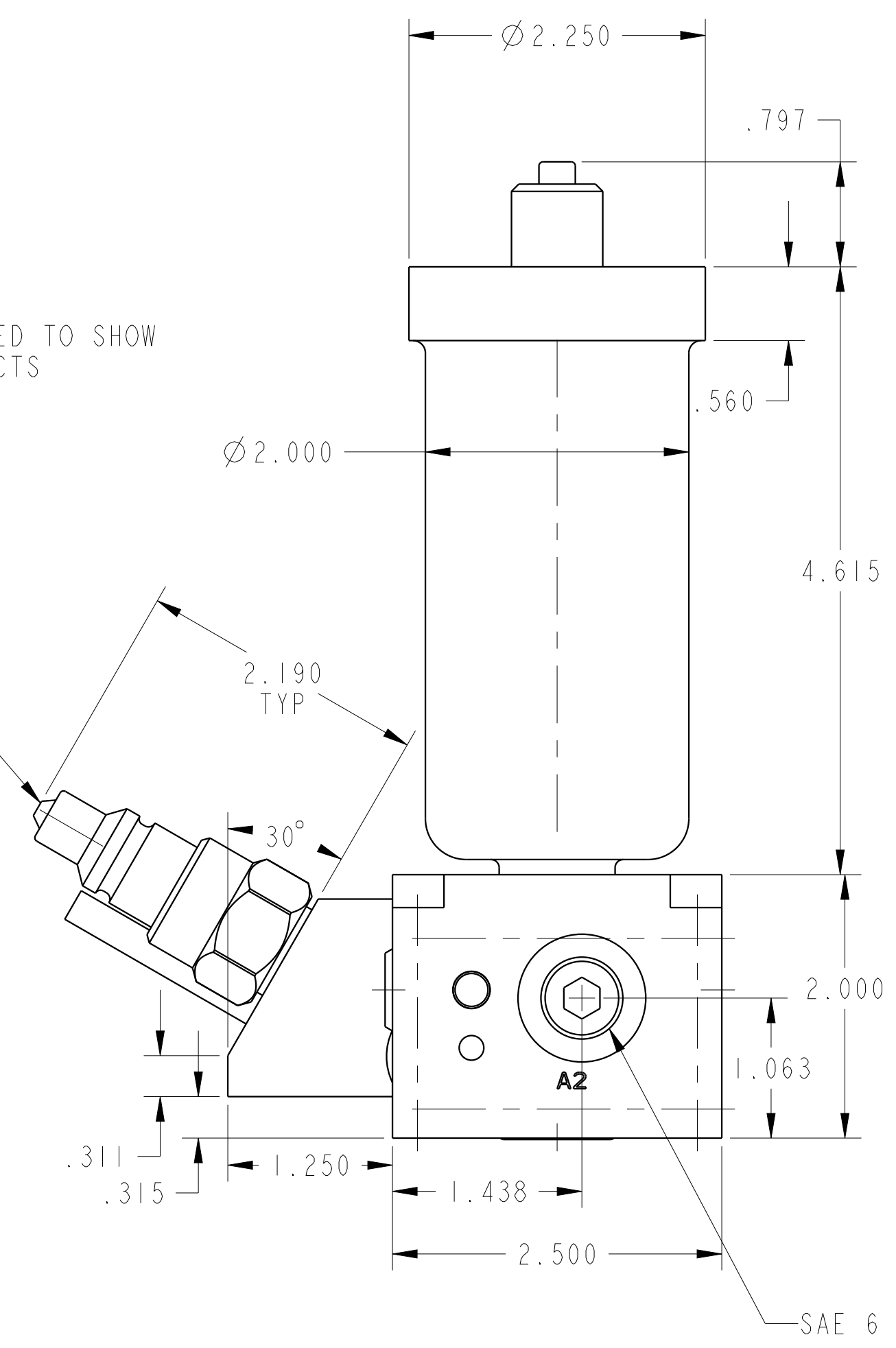
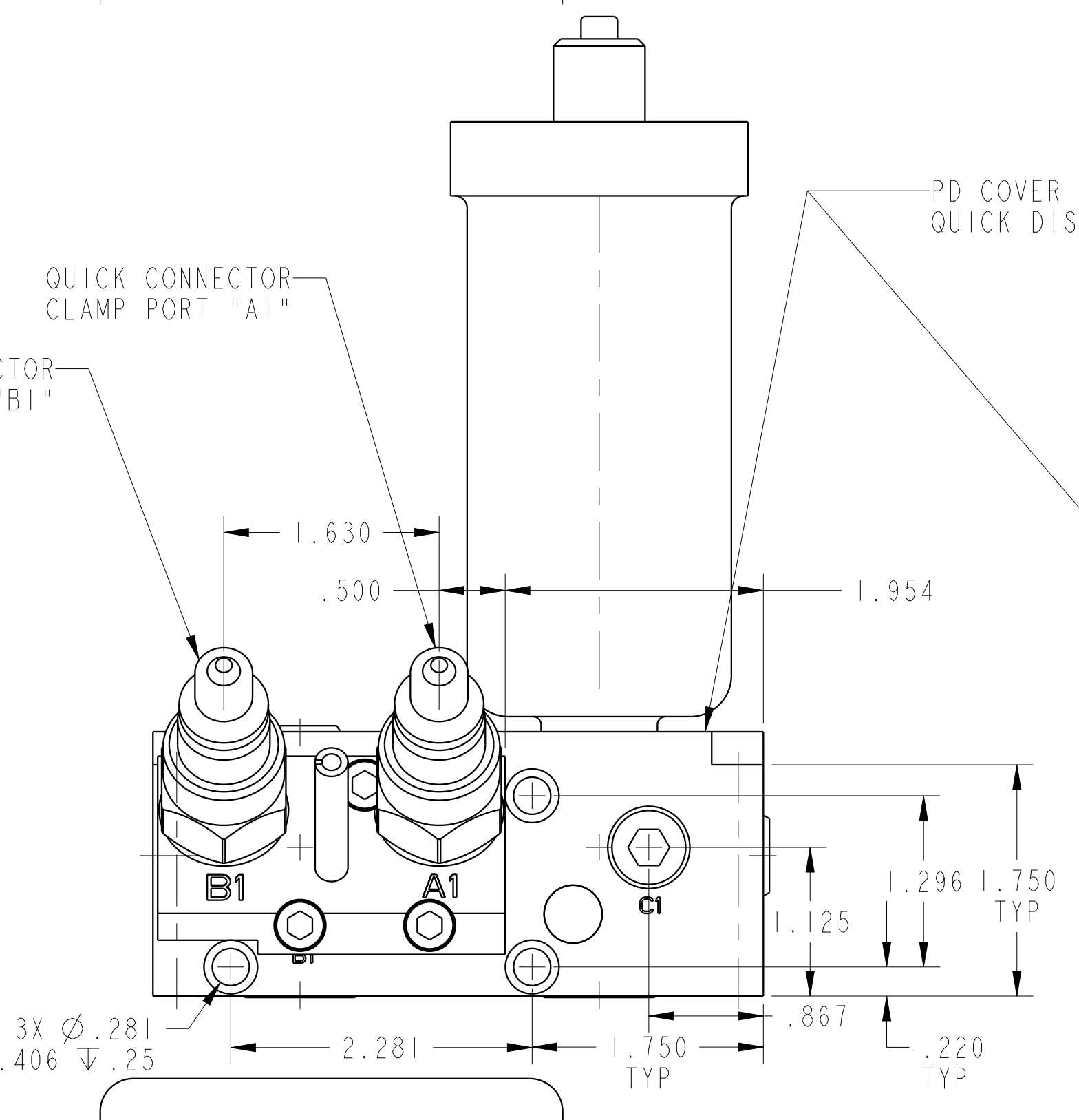
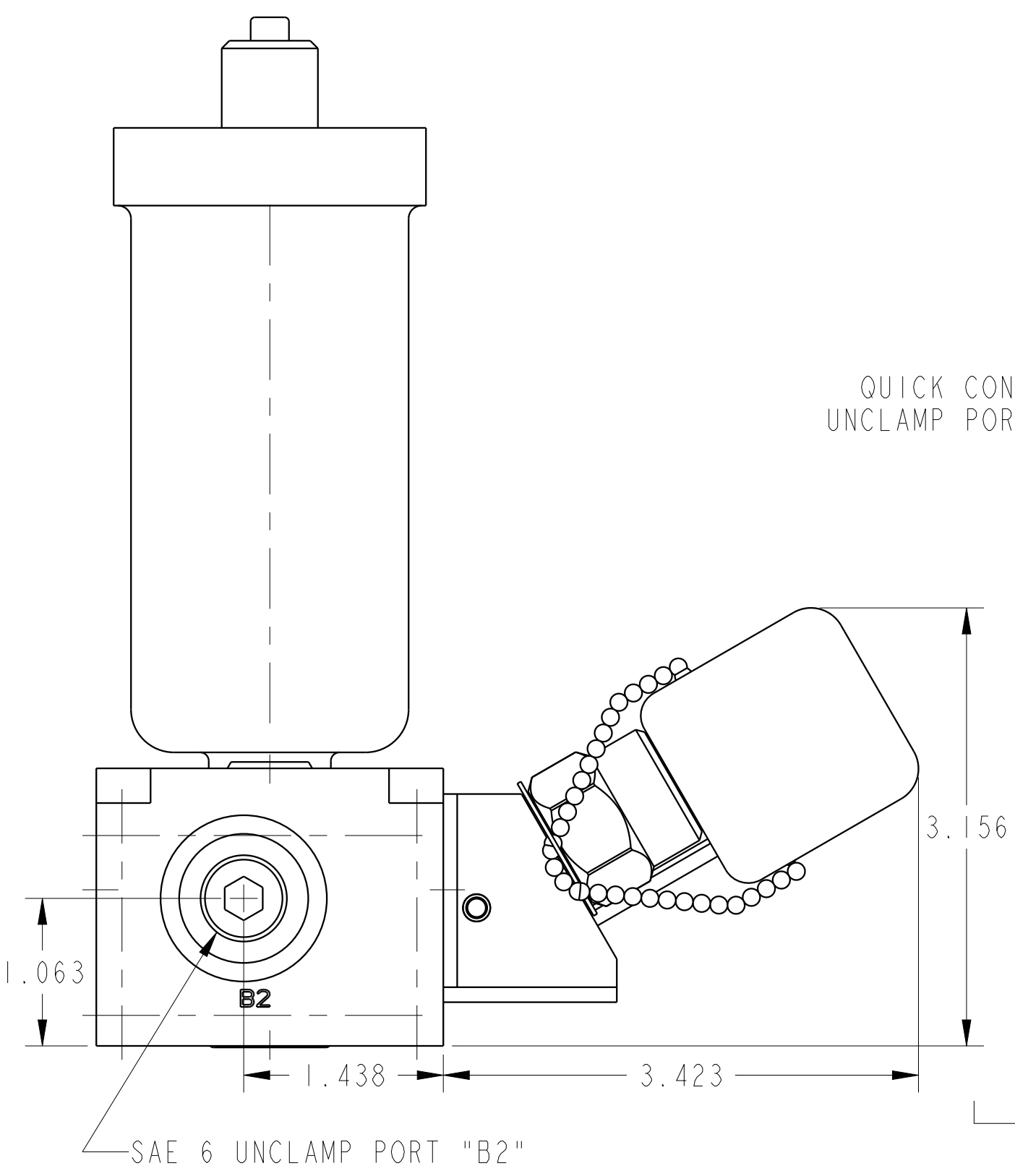


SCALE 0.500
ILC56000525 REV C ECN4131



CAD CONTROL DRAWING		VEKTEK VEKTEK, INC. 1334 E. SIXTH AVE. P.O. BOX 625 EMPORIA, KS. 66801 U.S.A.	

C	4131	RELEASE	NPETERS	3/16/20	56000525	E	PD, IH, DUAL, 3500, EXT ACC
REV	IN ACCORDANCE WITH ECN	EFFECTIVE DATE	REVISED BY	DATE	REFERENCE MODEL	REF REV	*****
DRW BY:	DRAWING STATUS: Released				TOLERANCES DO NOT APPLY		SIZE
DATE:	PRODUCTION APPROVED FOR RELEASED STATUS ONLY				DIMENSIONS ARE NOMINAL		D
							ILC56000525 REV C
							FORM FEG036, Rev. B