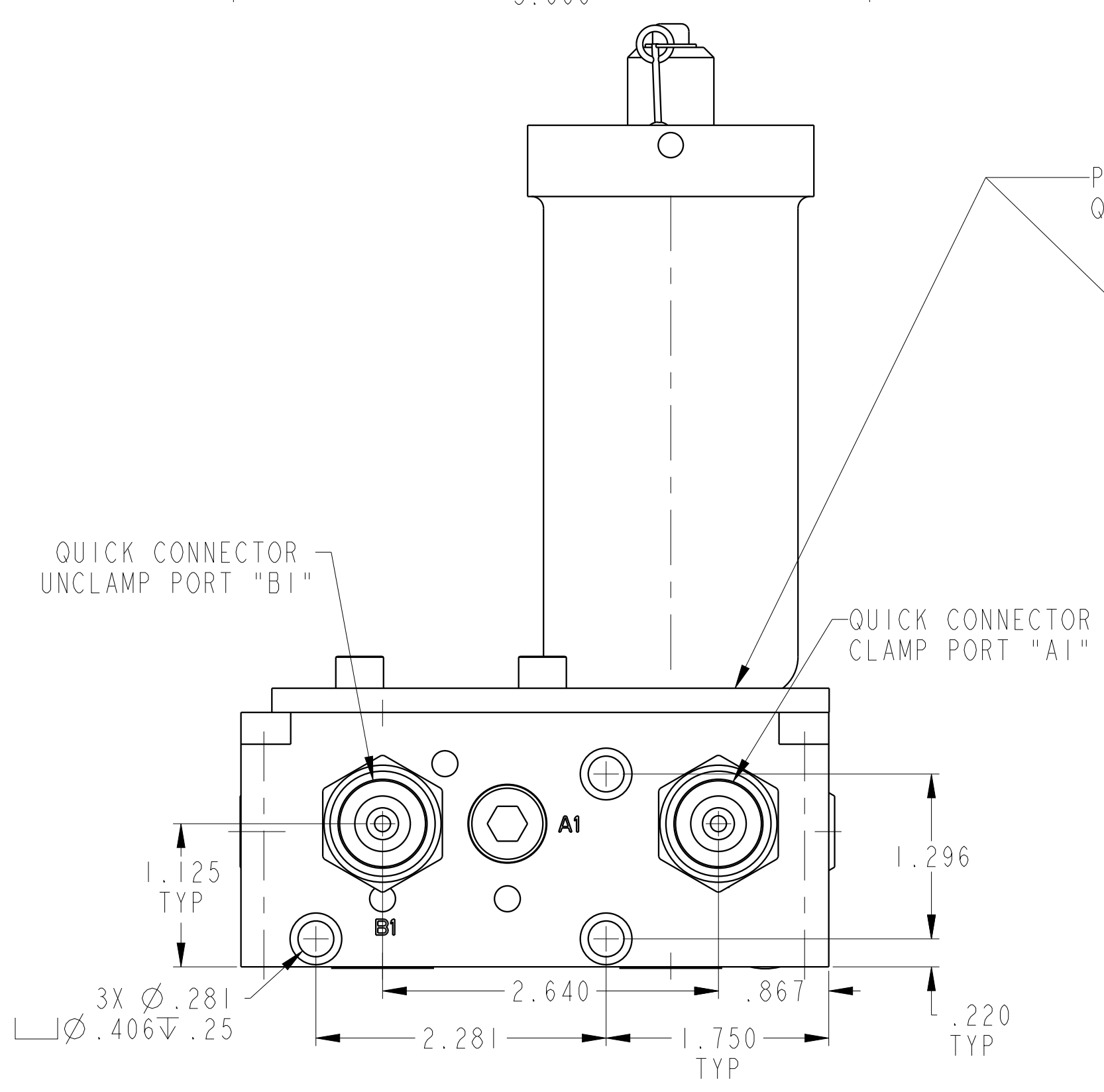
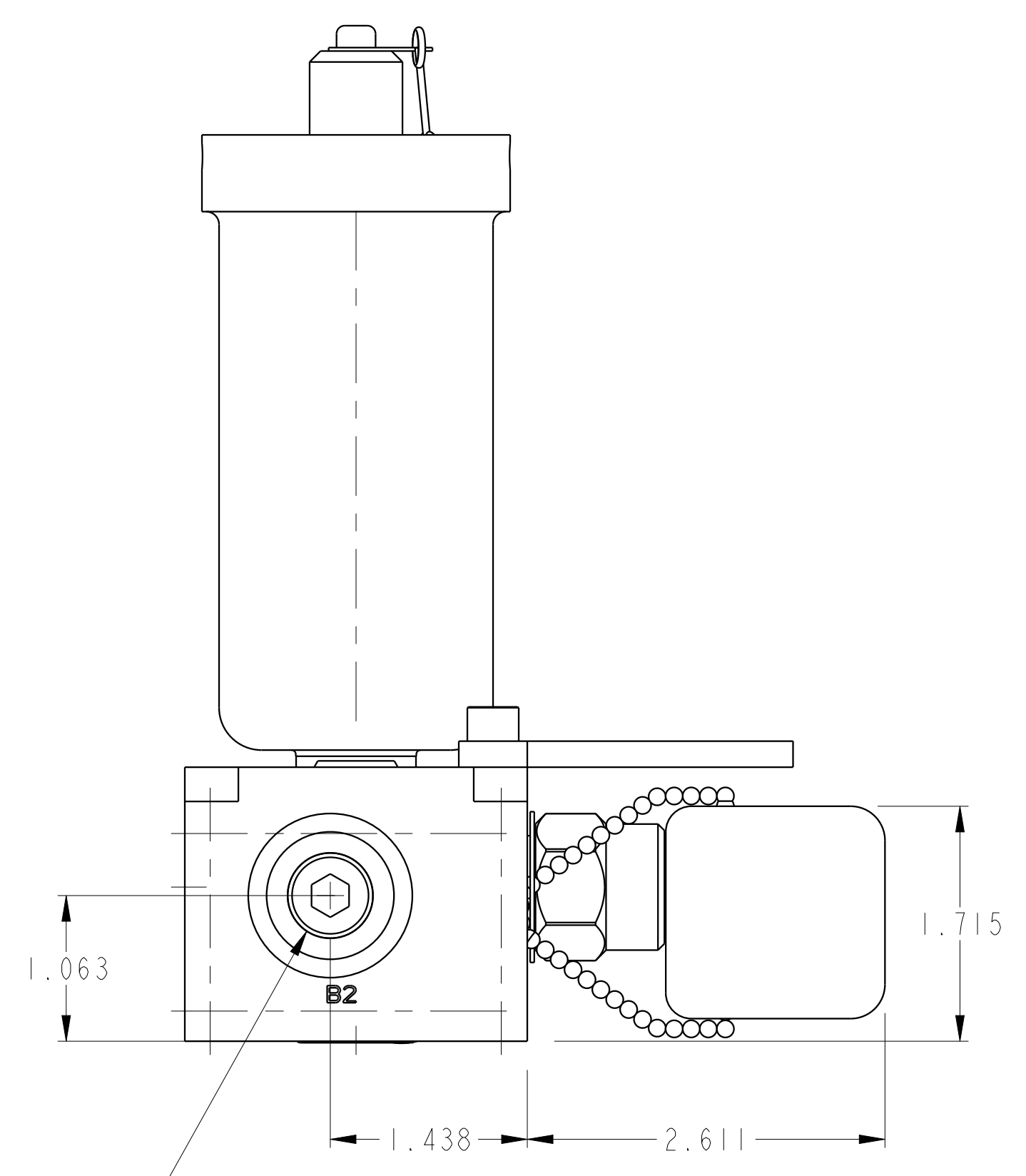
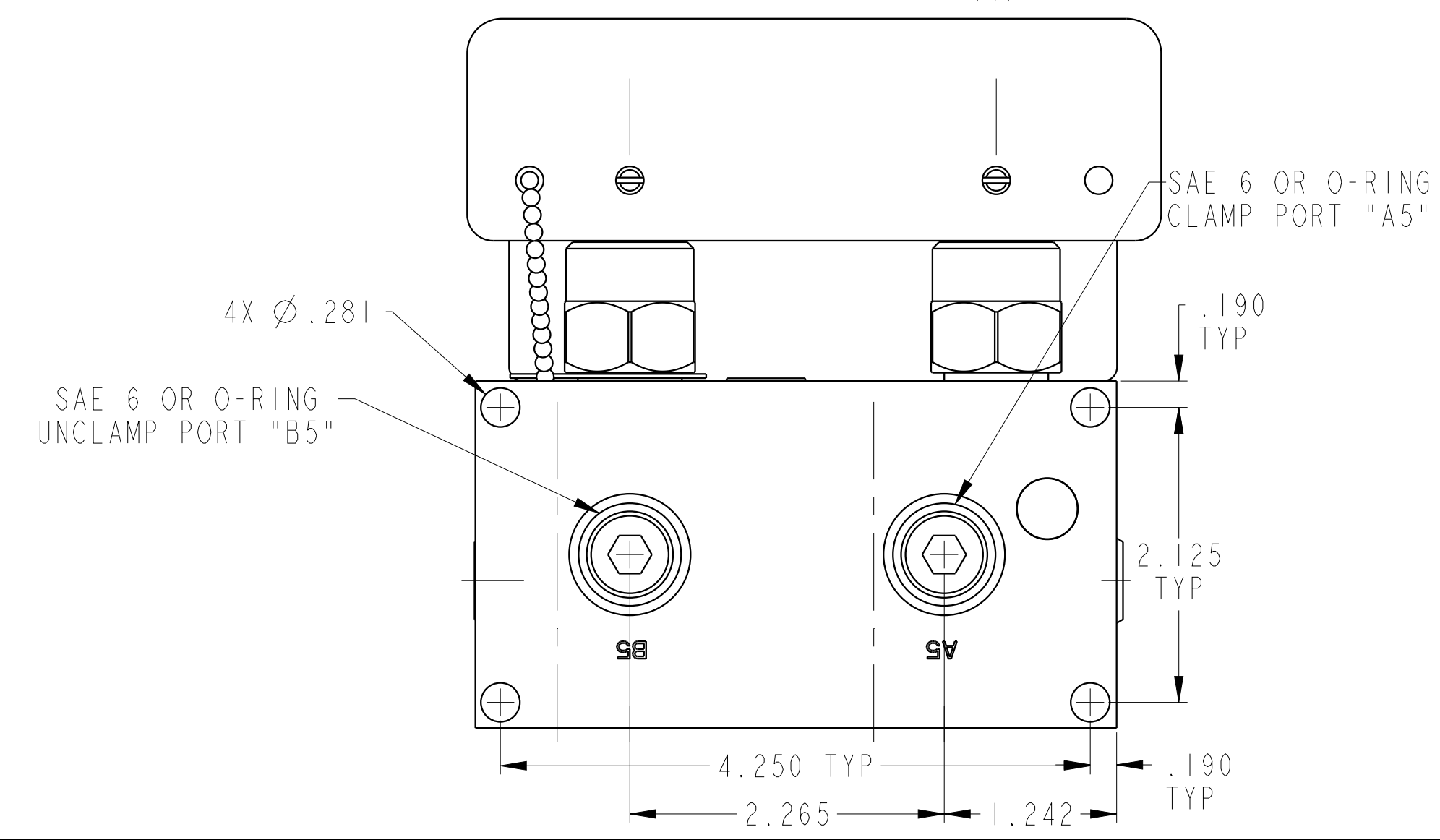
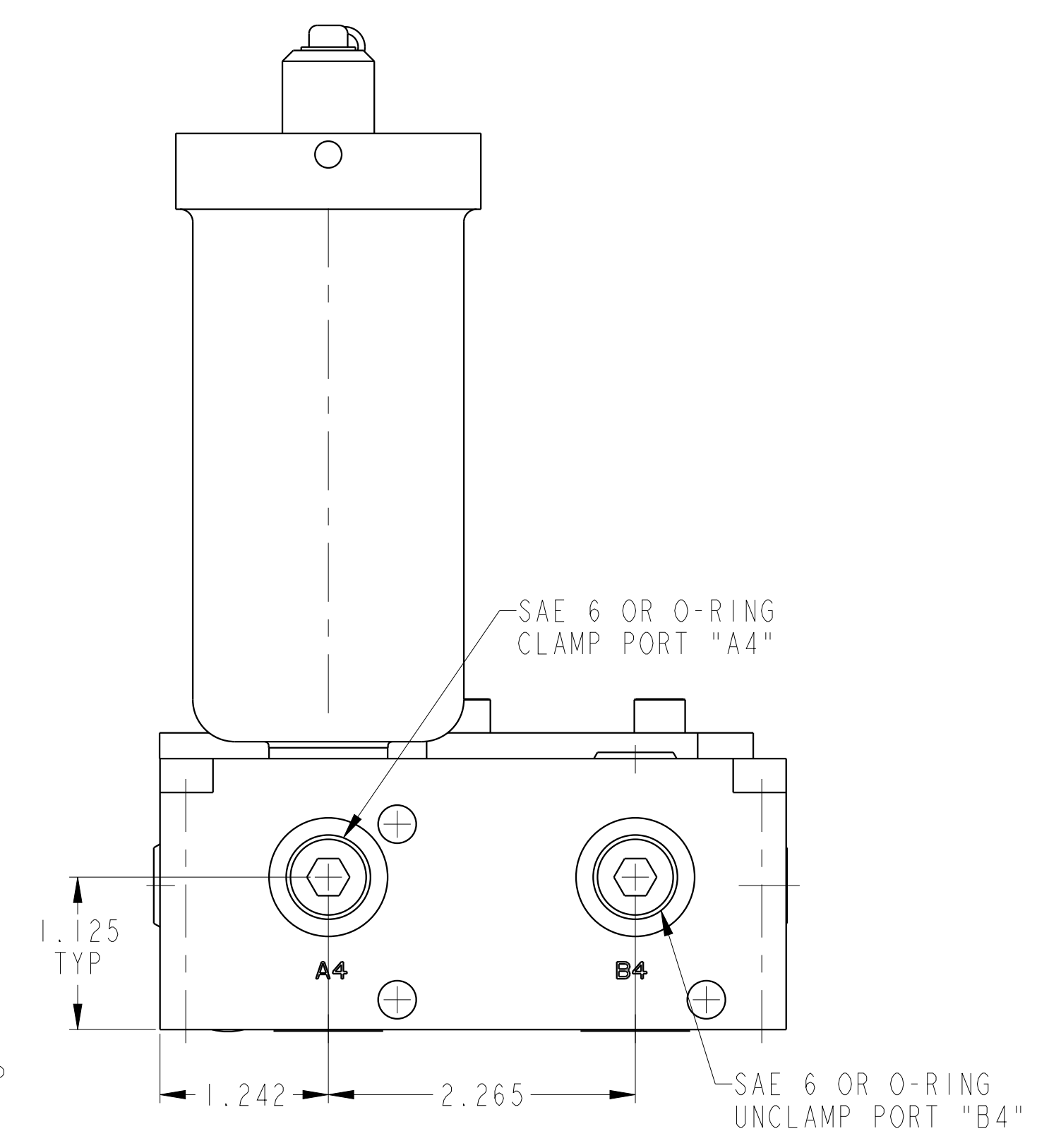
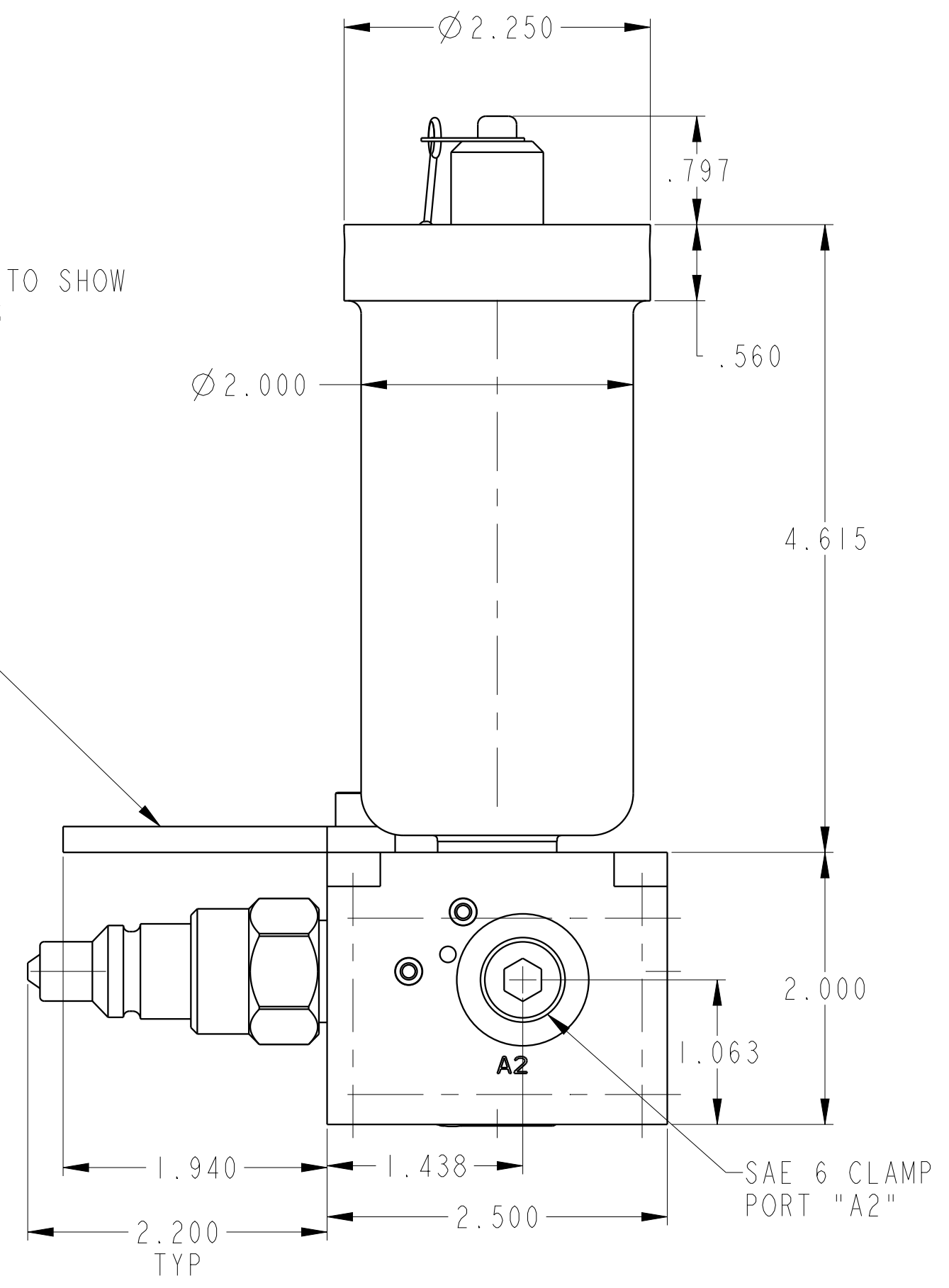


SCALE 0.500  
 ILC56000541 REV B ECN4131



PD COVER REMOVED TO SHOW QUICK DISCONNECTS



<b>CAD CONTROL DRAWING</b>			
		VEKTEK, INC. 1334 E. SIXTH AVE. P.O. BOX 625 EMPORIA, KS. 66801 U.S.A.	

B	4131	RELEASE	NPETERS	3/20/20	56000541	B	PD, 2H, DUAL, 1000, EXT ACC
REV	IN ACCORDANCE WITH ECN	EFFECTIVE DATE	REVISED BY	DATE	REFERENCE MODEL	REF REV	*****
DRW BY:	DLG	DRAWING STATUS: <b>Released</b>			TOLERANCES DO NOT APPLY DIMENSIONS ARE NOMINAL		SIZE D
DATE:	6/12/18	PRODUCTION APPROVED FOR RELEASED STATUS ONLY			ILC56000541		REV B