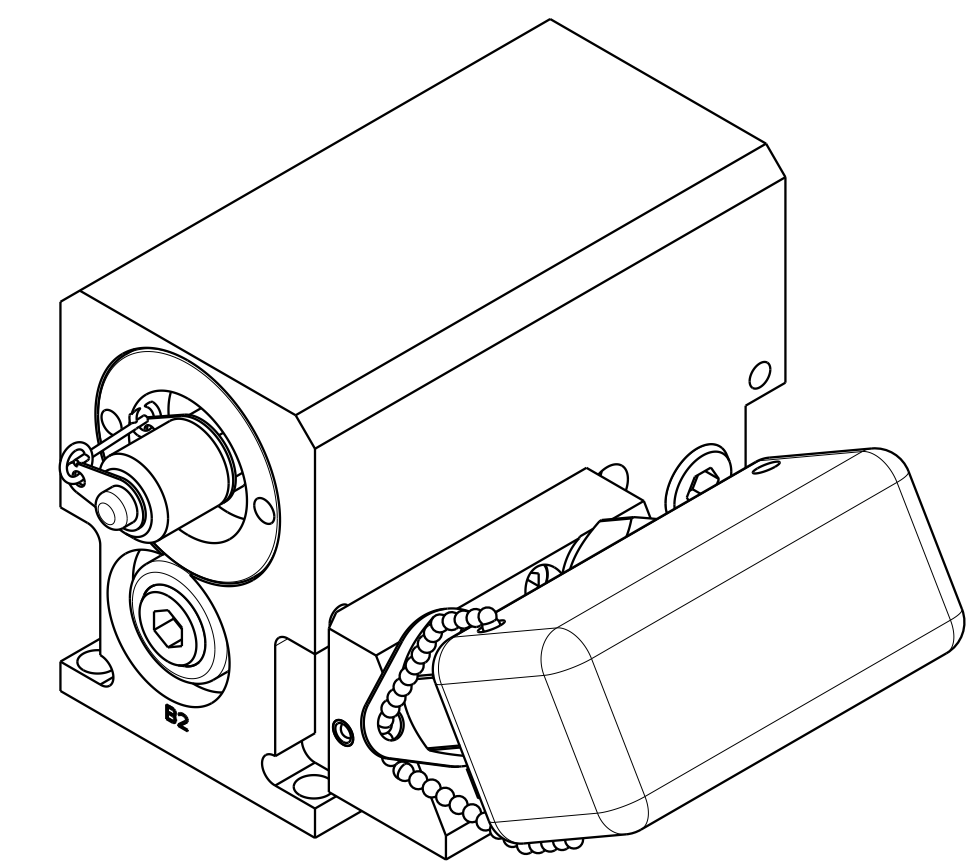
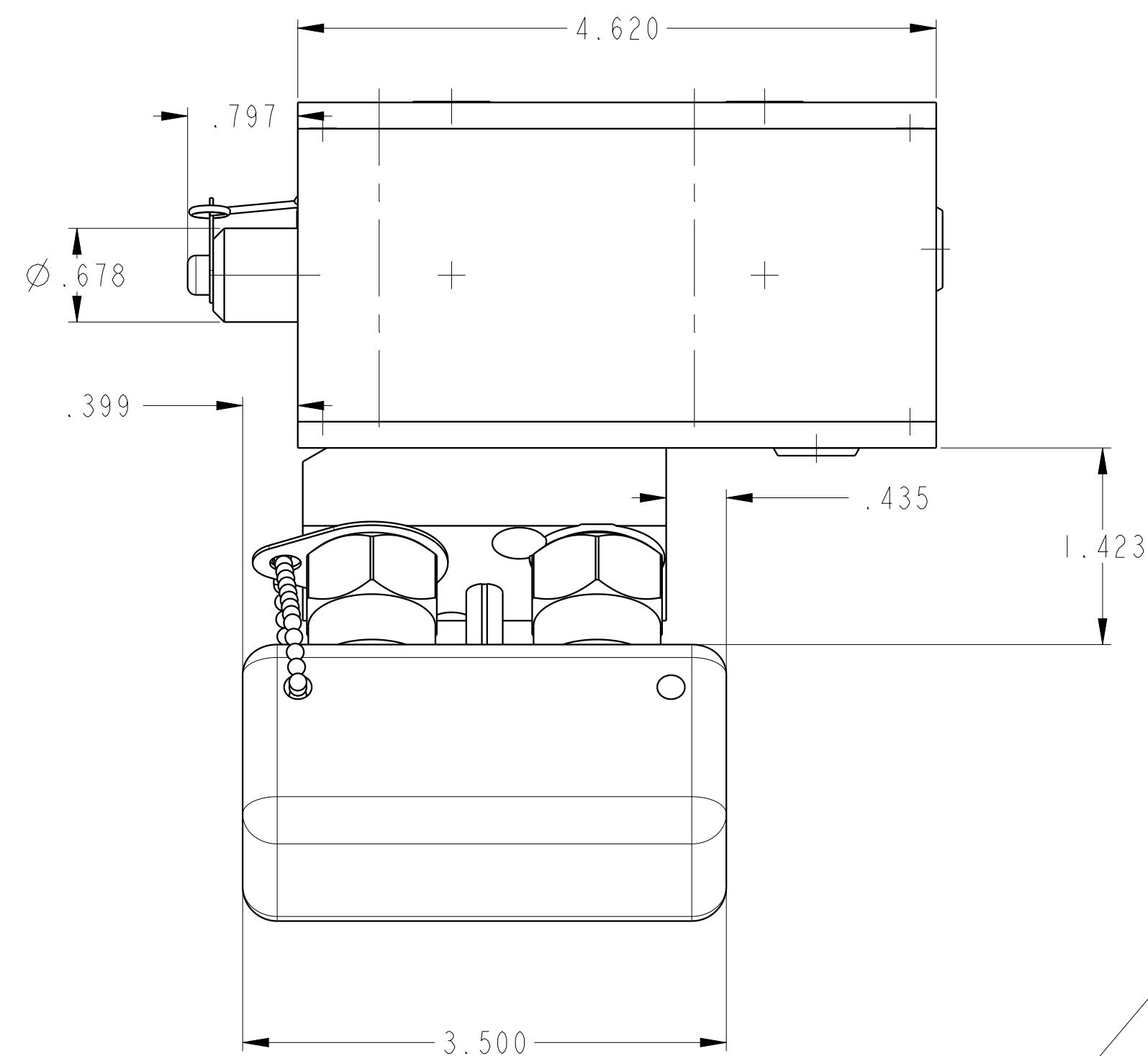


1

2

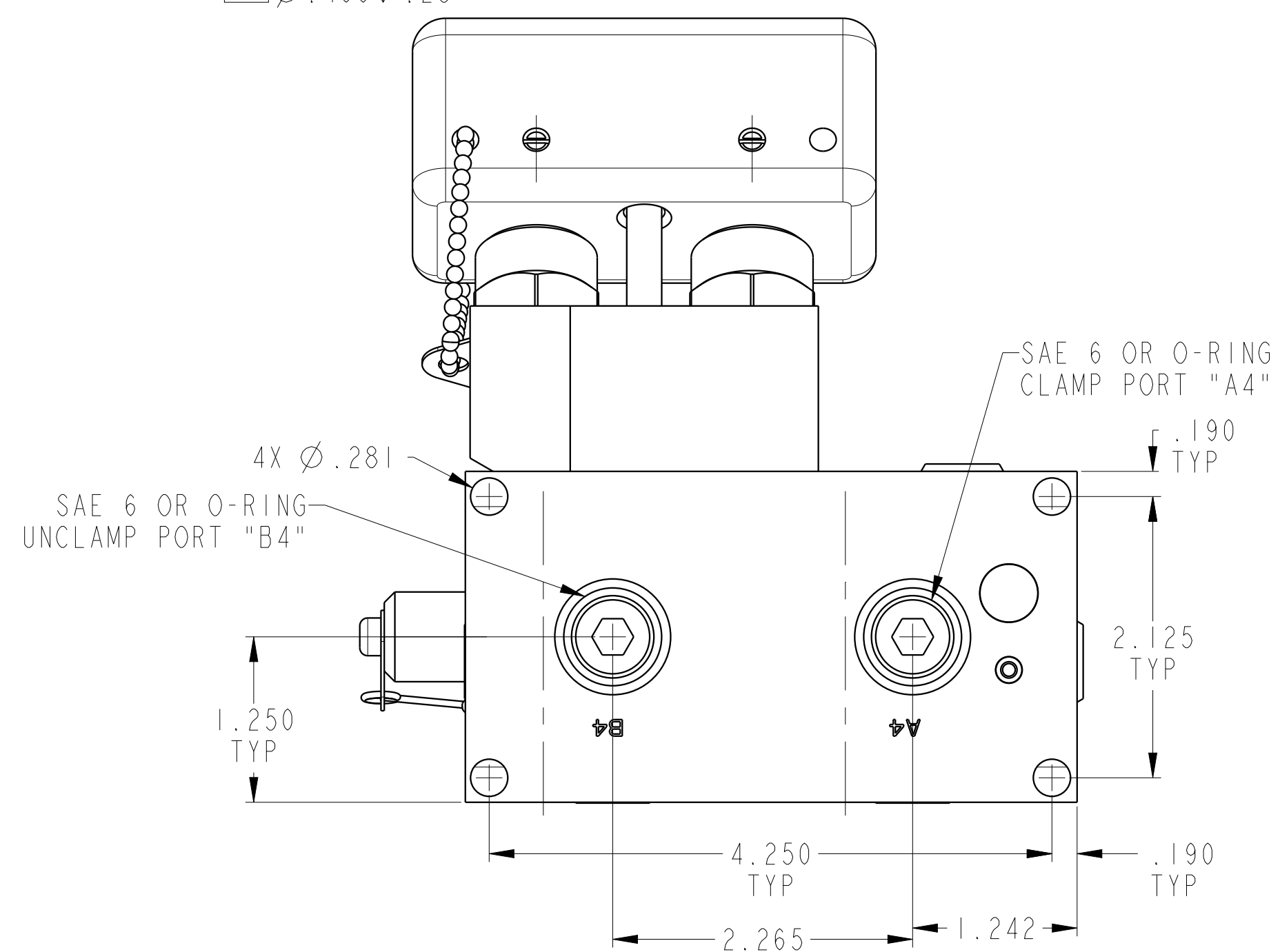
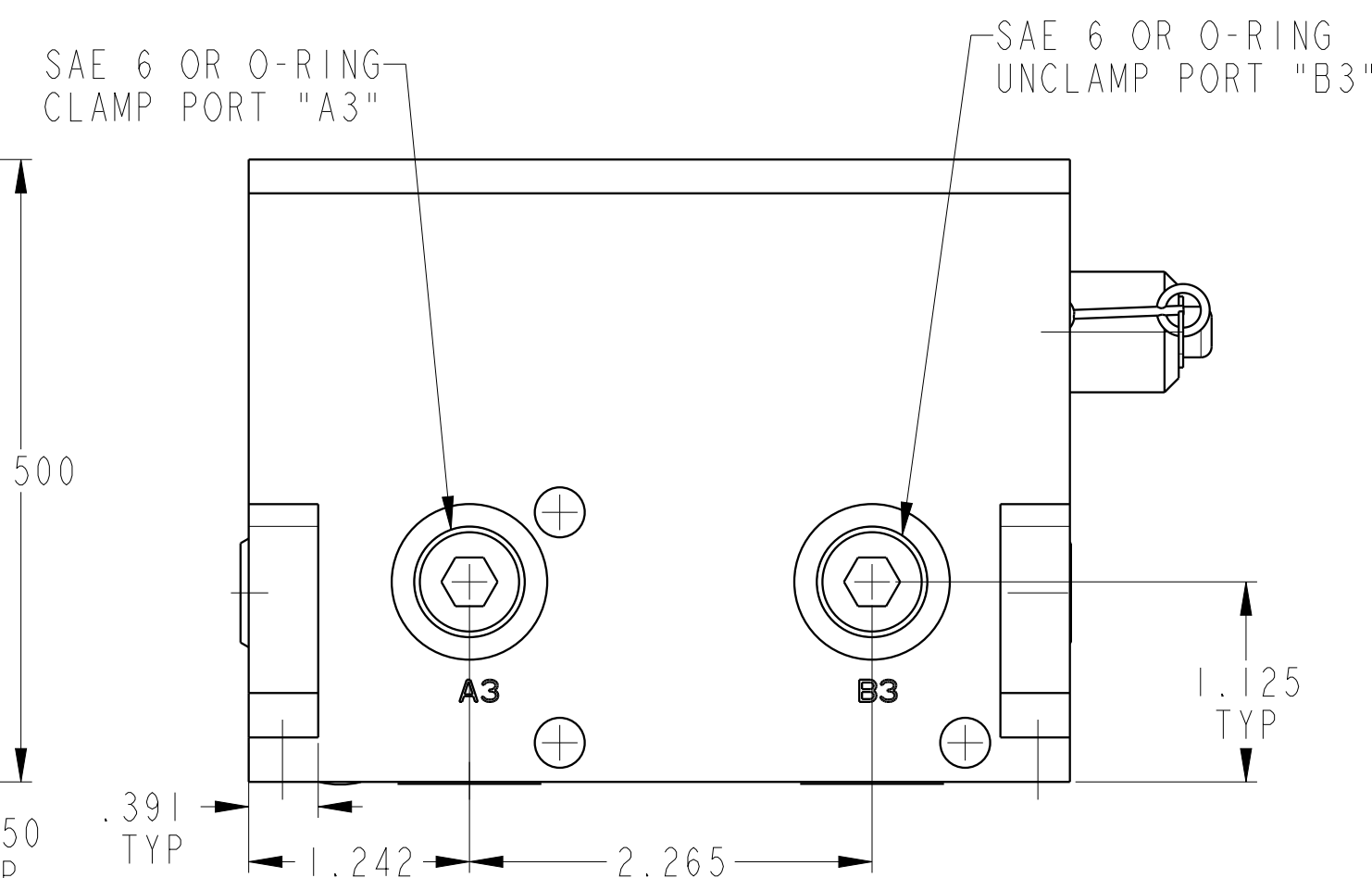
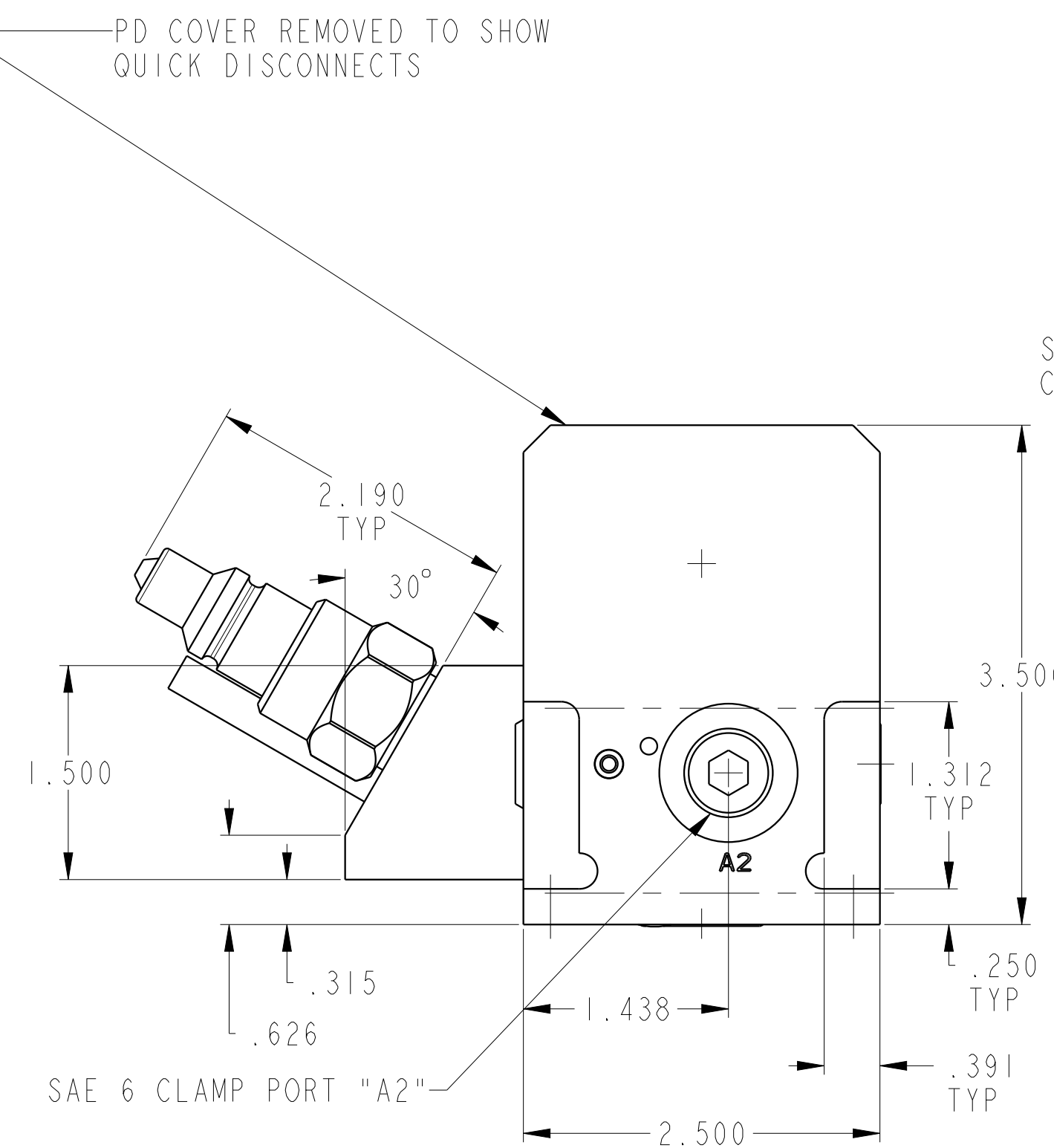
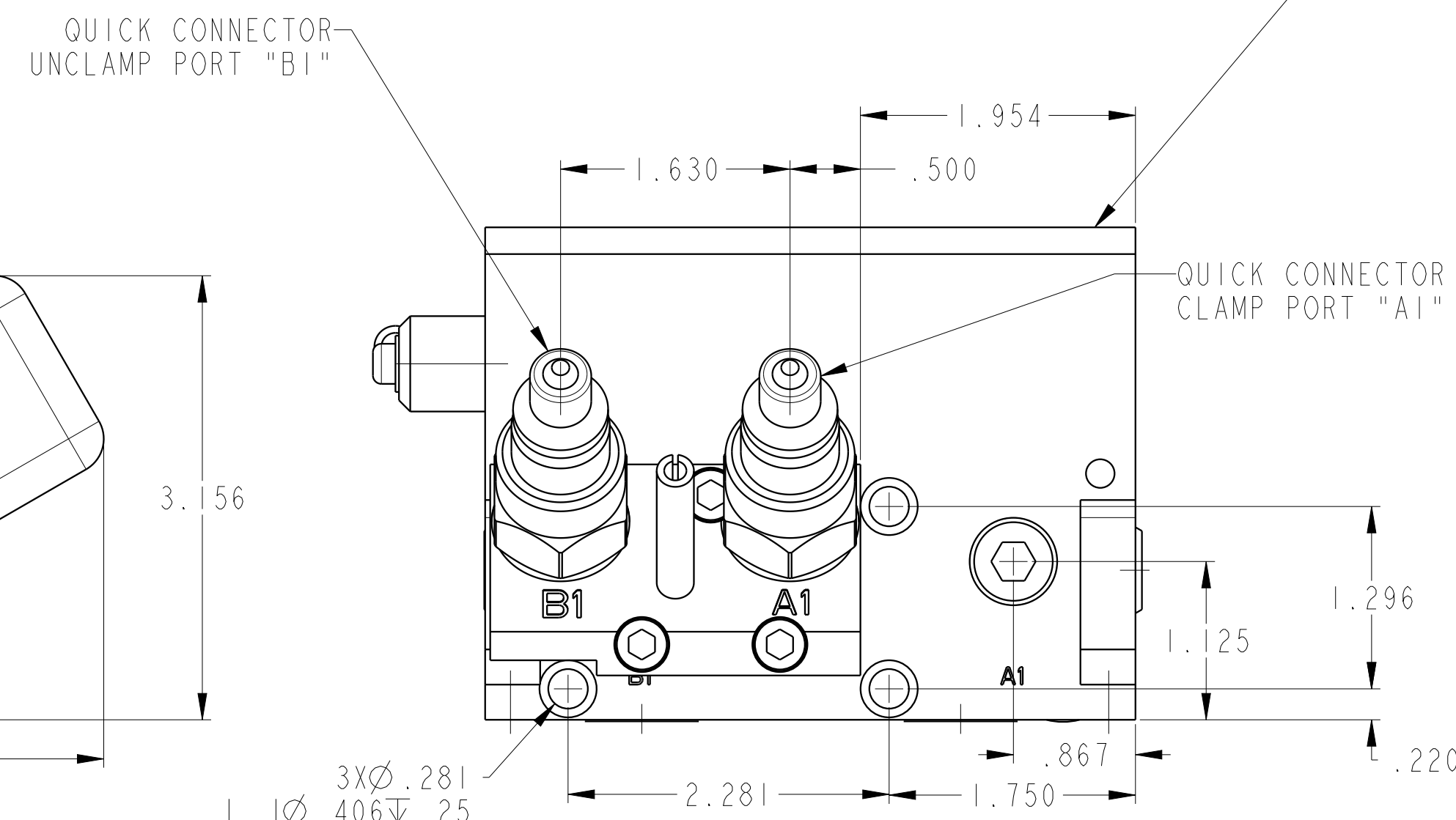
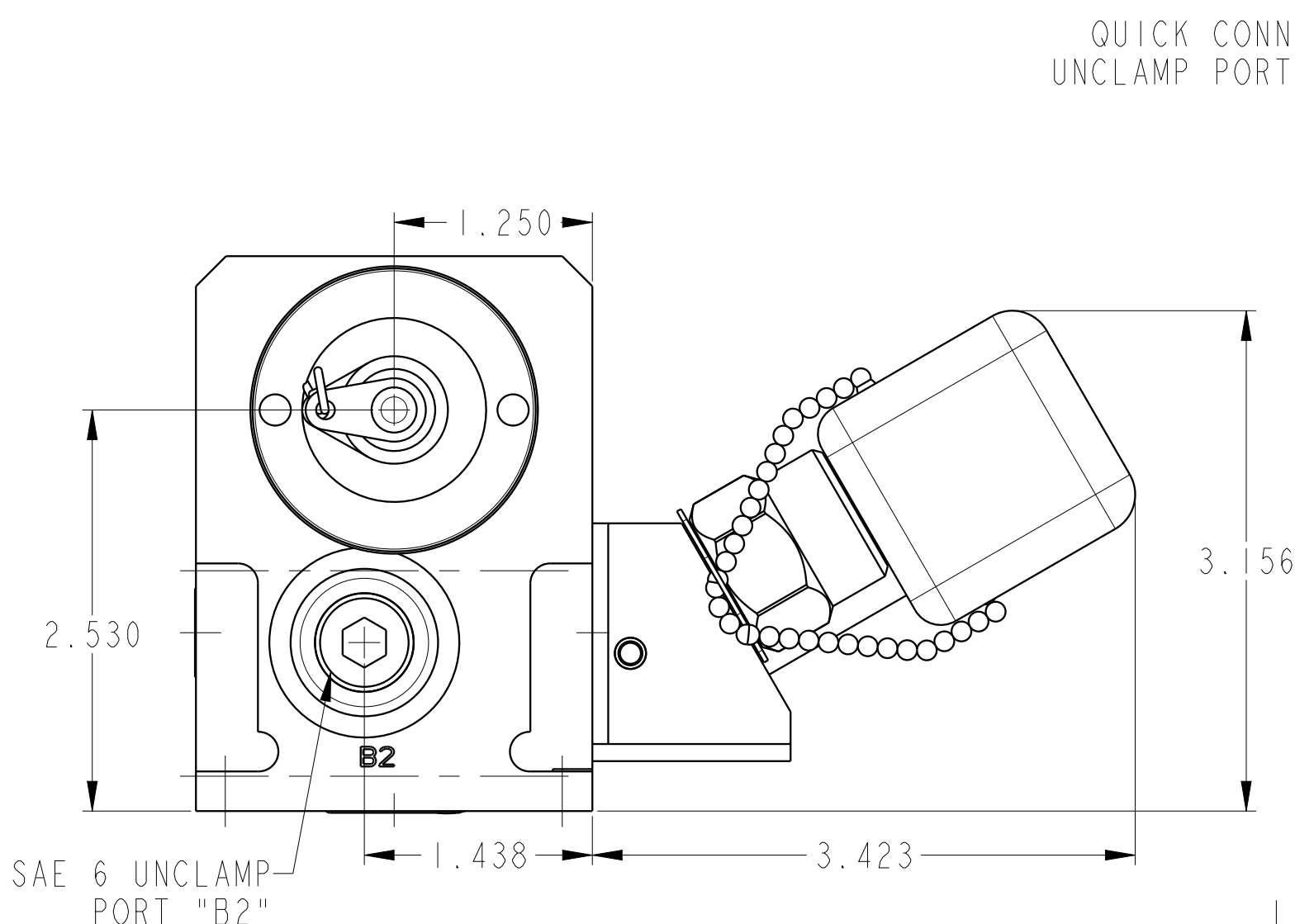
3

4



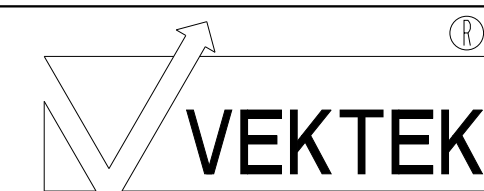
SCALE 0.750

ILC56000542 REV B ECN4131

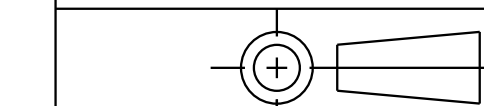


B	4131	RELEASE	NPETERS	3/17/20
REV	IN ACCORDANCE WITH ECN	EFFECTIVE DATE	REVISED BY	DATE
DRW BY:	DLG	DRAWING STATUS: Released		
DATE:	6/12/18	PRODUCTION APPROVED FOR RELEASED STATUS ONLY		

CAD CONTROL DRAWING



VEKTEK, INC.
1334 E. SIXTH AVE. P.O. BOX 625
EMPORIA, KS. 66801 U.S.A.



56000542	B
REFERENCE MODEL	REF REV

PD, 1H, DUAL, 1000, INT ACC

TOLERANCES DO NOT APPLY DIMENSIONS ARE NOMINAL

SIZE D	ILC56000542	REV B
--------	-------------	-------

FORM FEG036, Rev. B

2

3

4

SHEET 1 OF 1