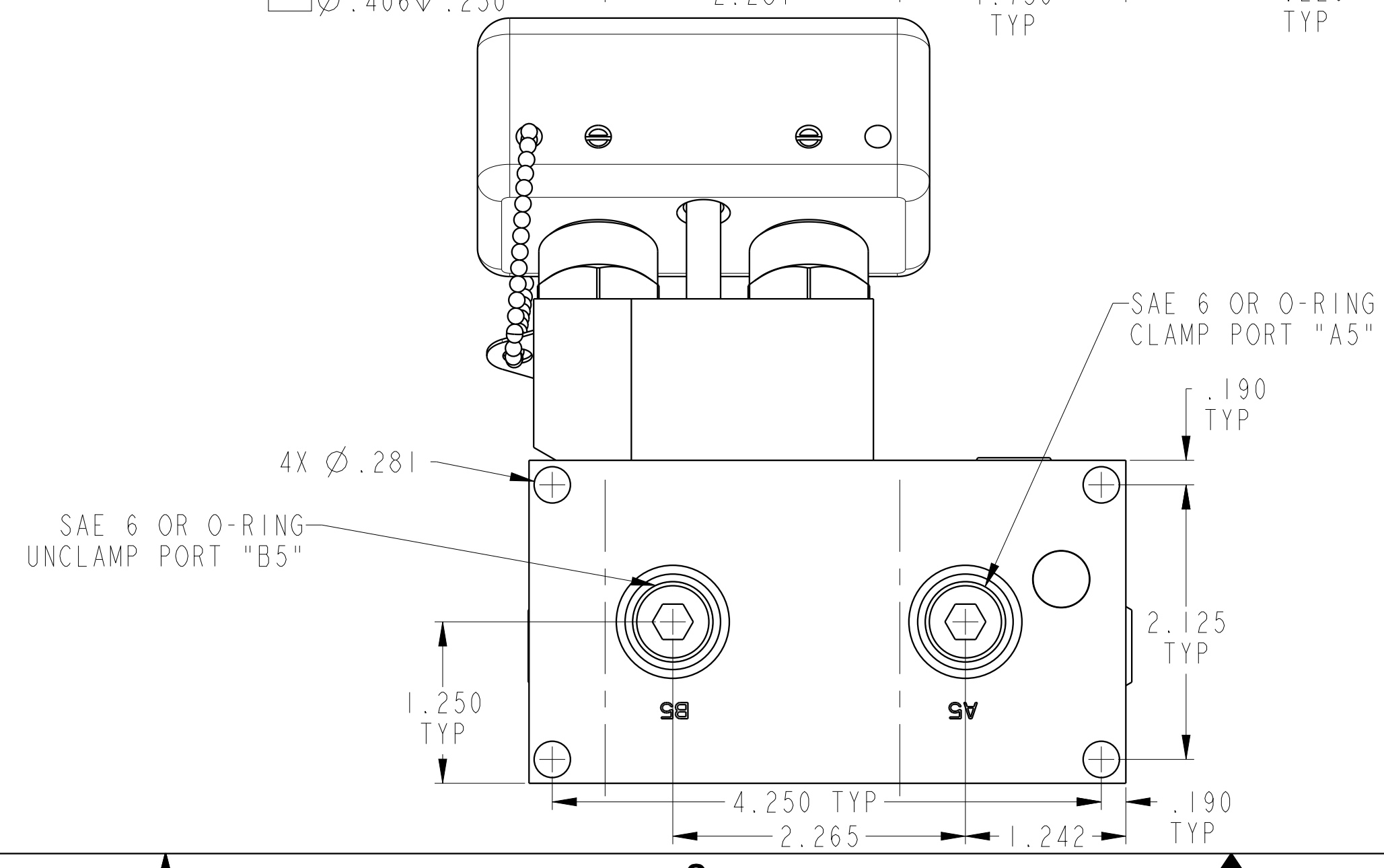
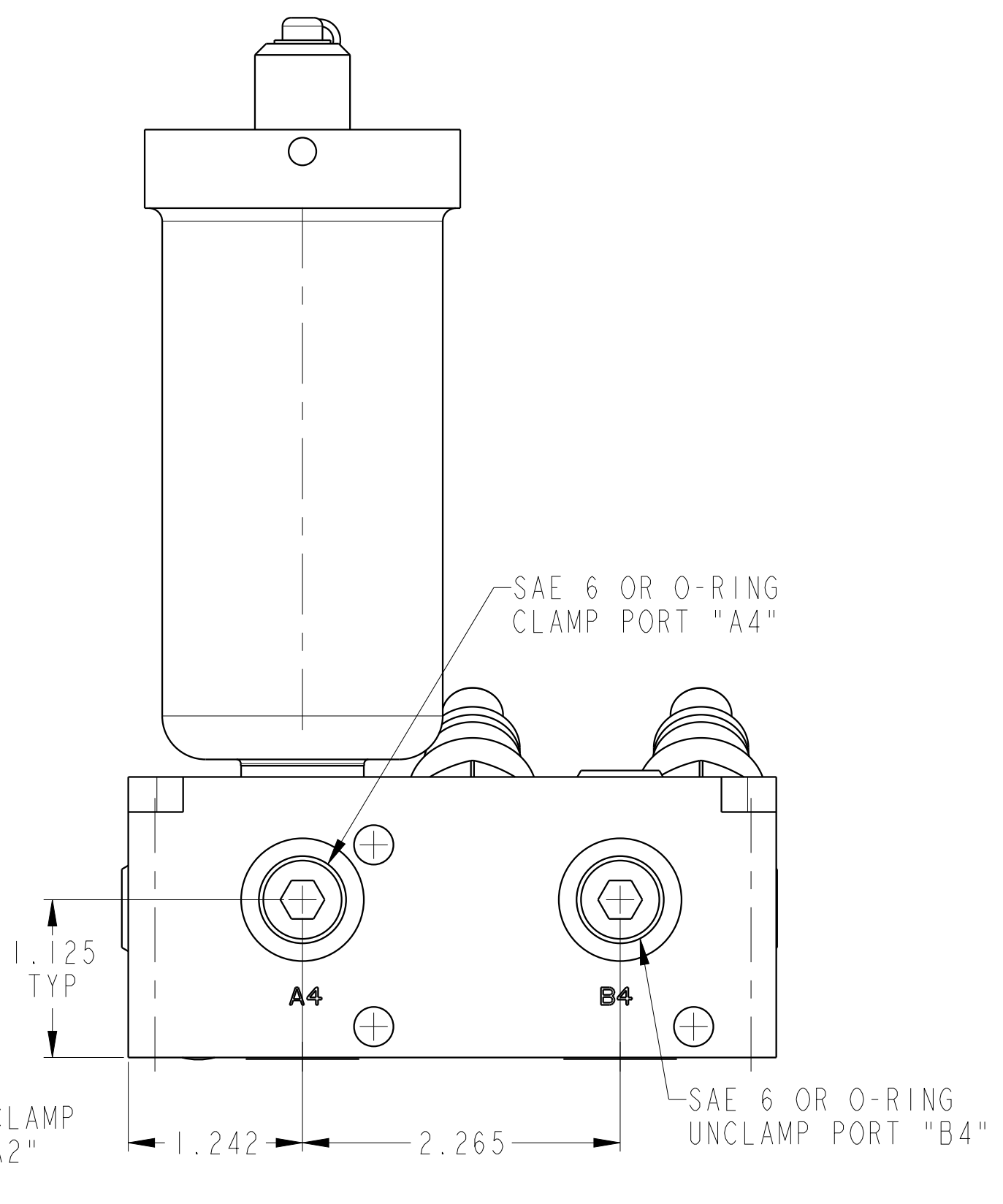
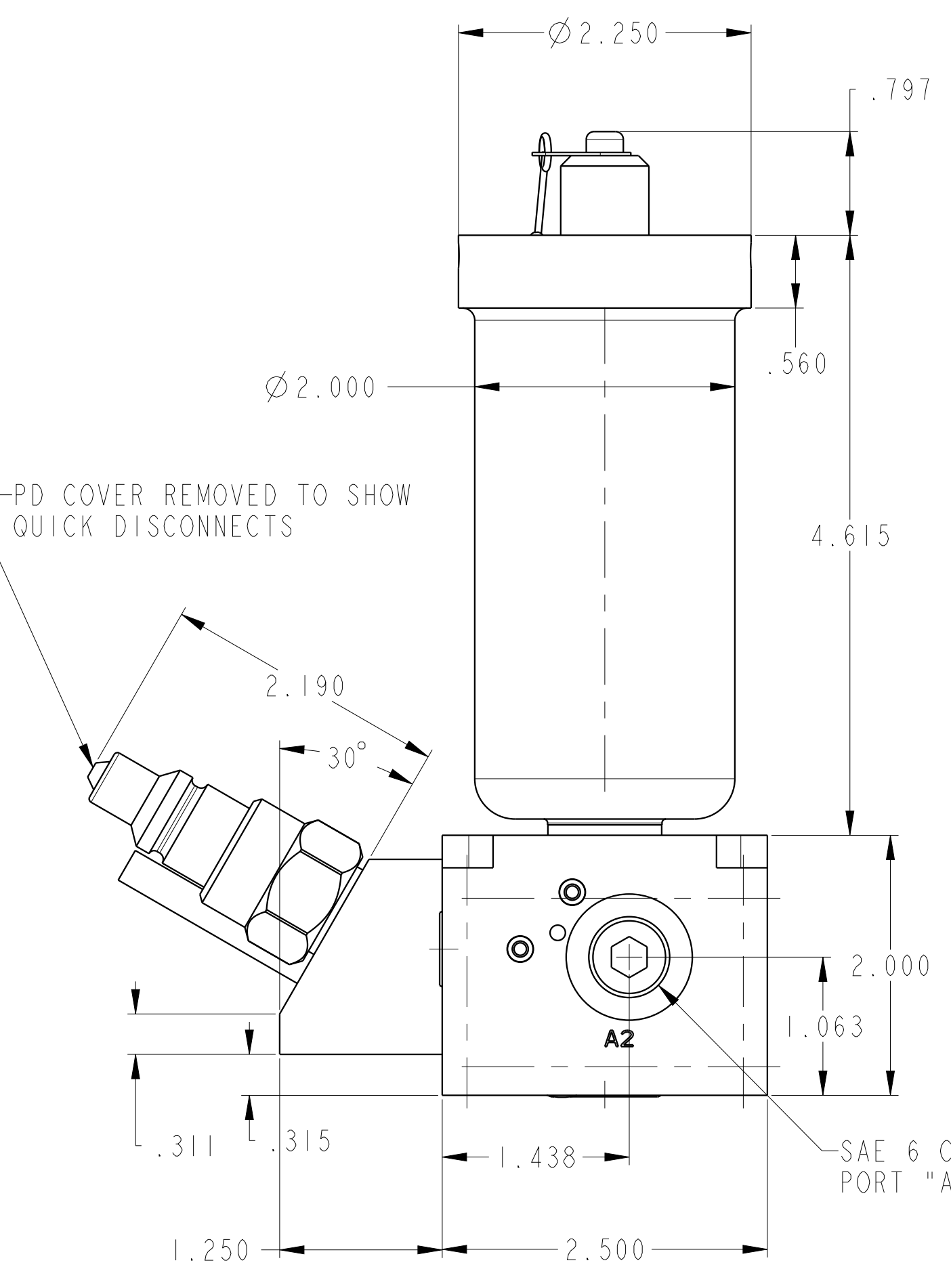
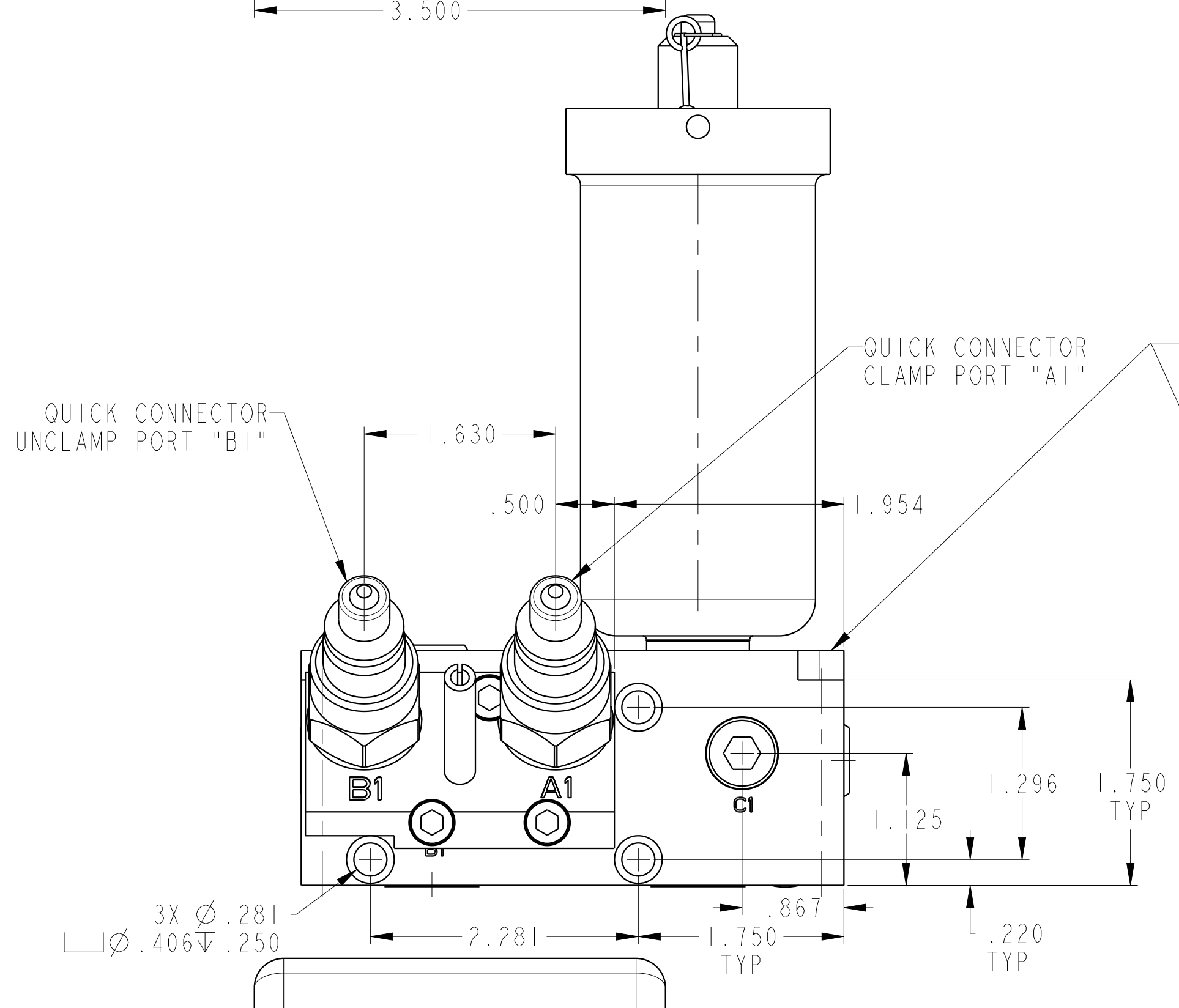
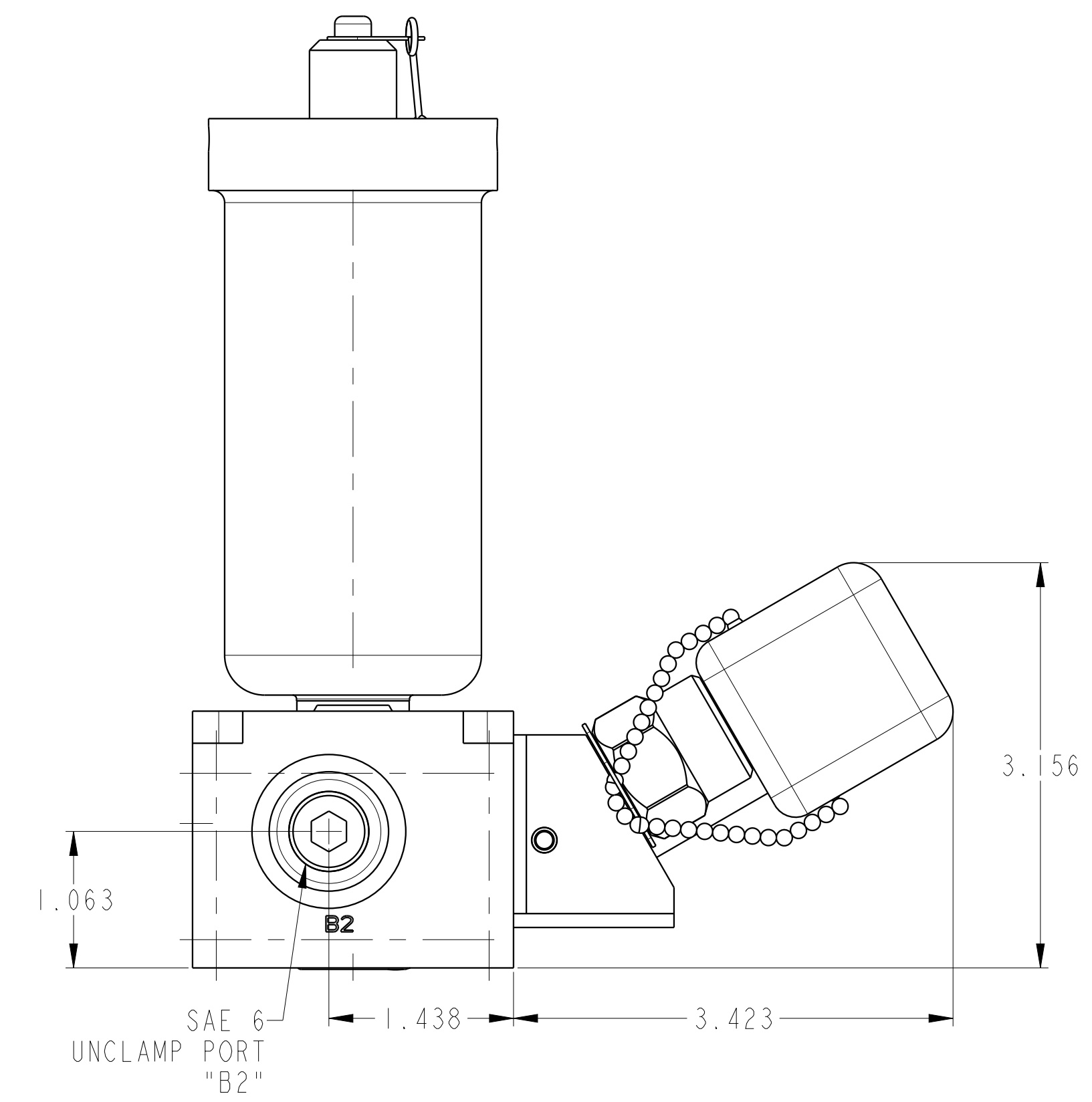


SCALE 0.500
 ILC56000543 REV B ECN4131



CAD CONTROL DRAWING		VEKTEK	
		VEKTEK, INC. 1334 E. SIXTH AVE. P.O. BOX 625 EMPORIA, KS. 66801 U.S.A.	

B	4131	RELEASE	NPETERS	3/17/20
REV	IN ACCORDANCE WITH ECN	EFFECTIVE DATE	REVISED BY	DATE
DRW BY:	DLG	DRAWING STATUS: Released		
DATE:	6/12/18	PRODUCTION APPROVED FOR RELEASED STATUS ONLY		

56000543	B	PD, 1H, DUAL, 1000, EXT ACC
REFERENCE MODEL	REF REV	*****
TOLERANCES DO NOT APPLY DIMENSIONS ARE NOMINAL		SIZE D
		ILC56000543 REV B