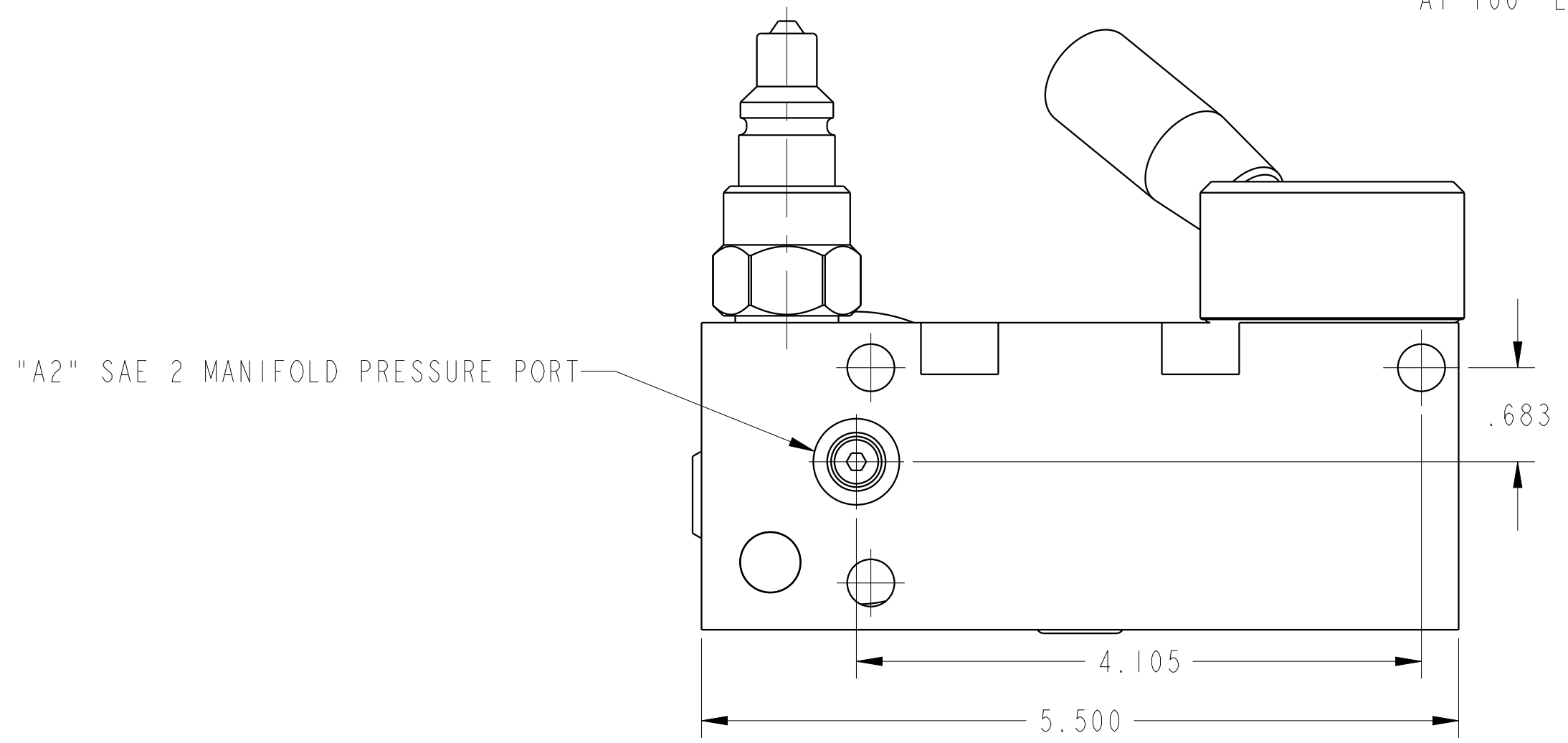
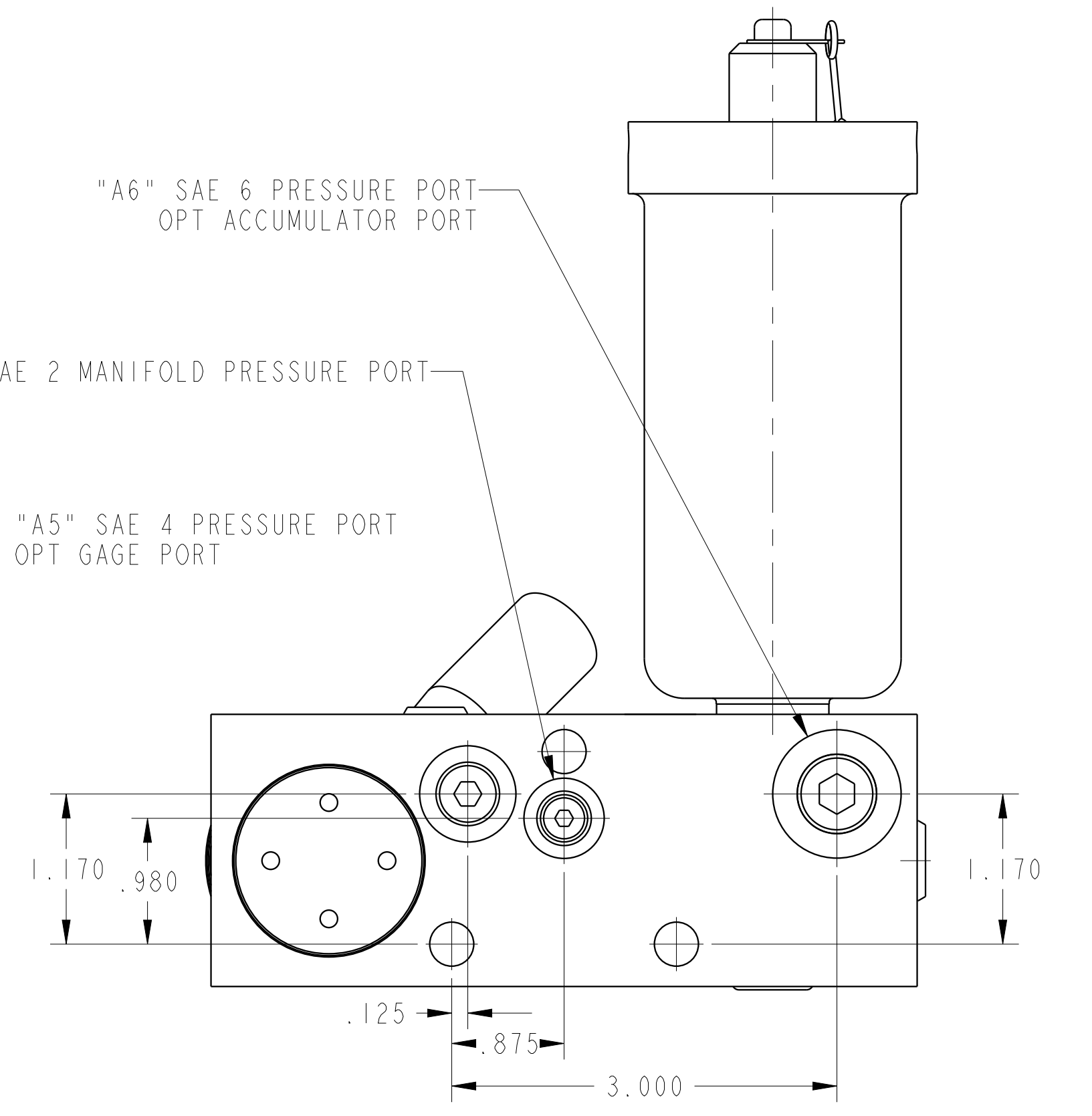
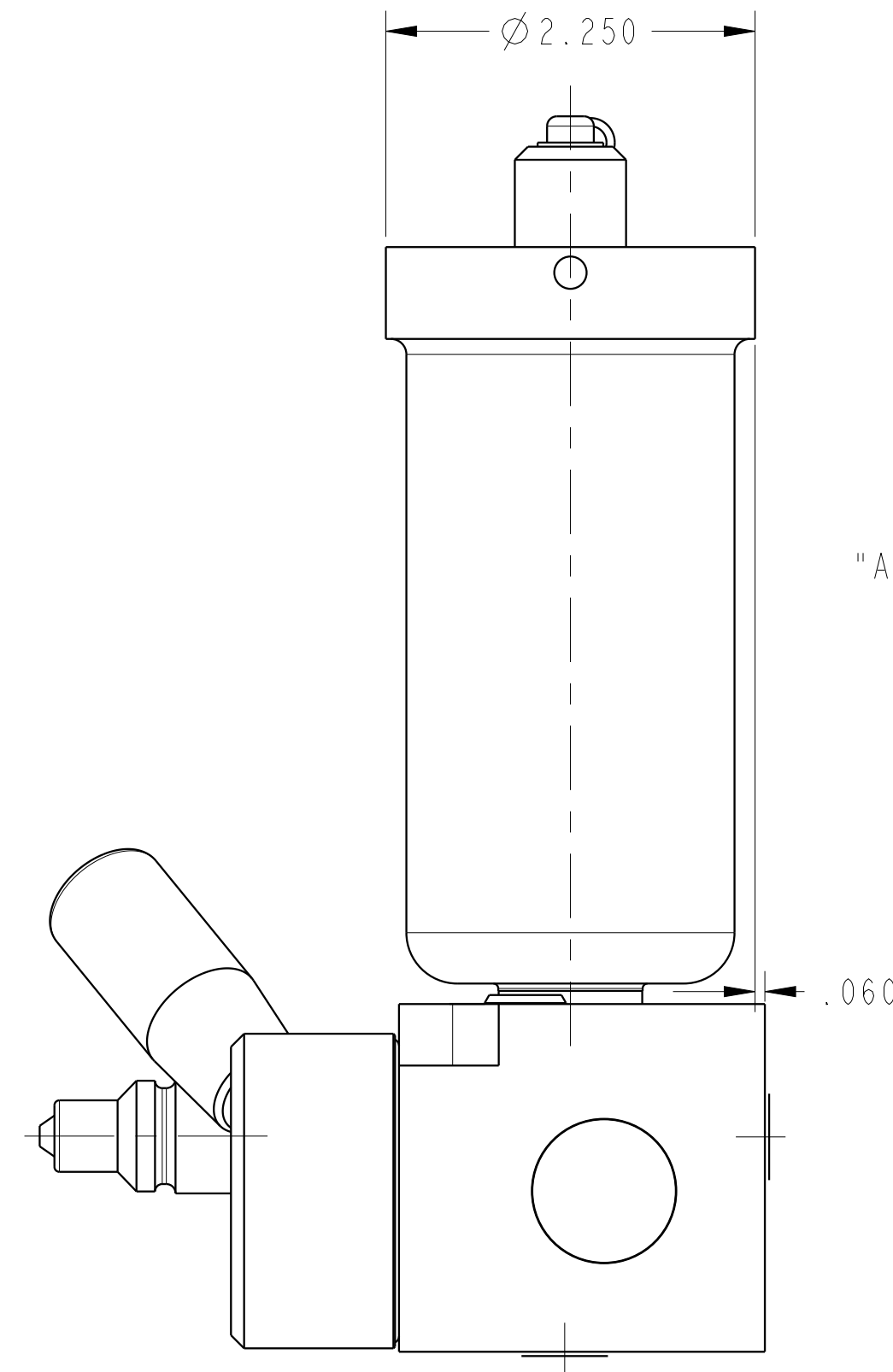
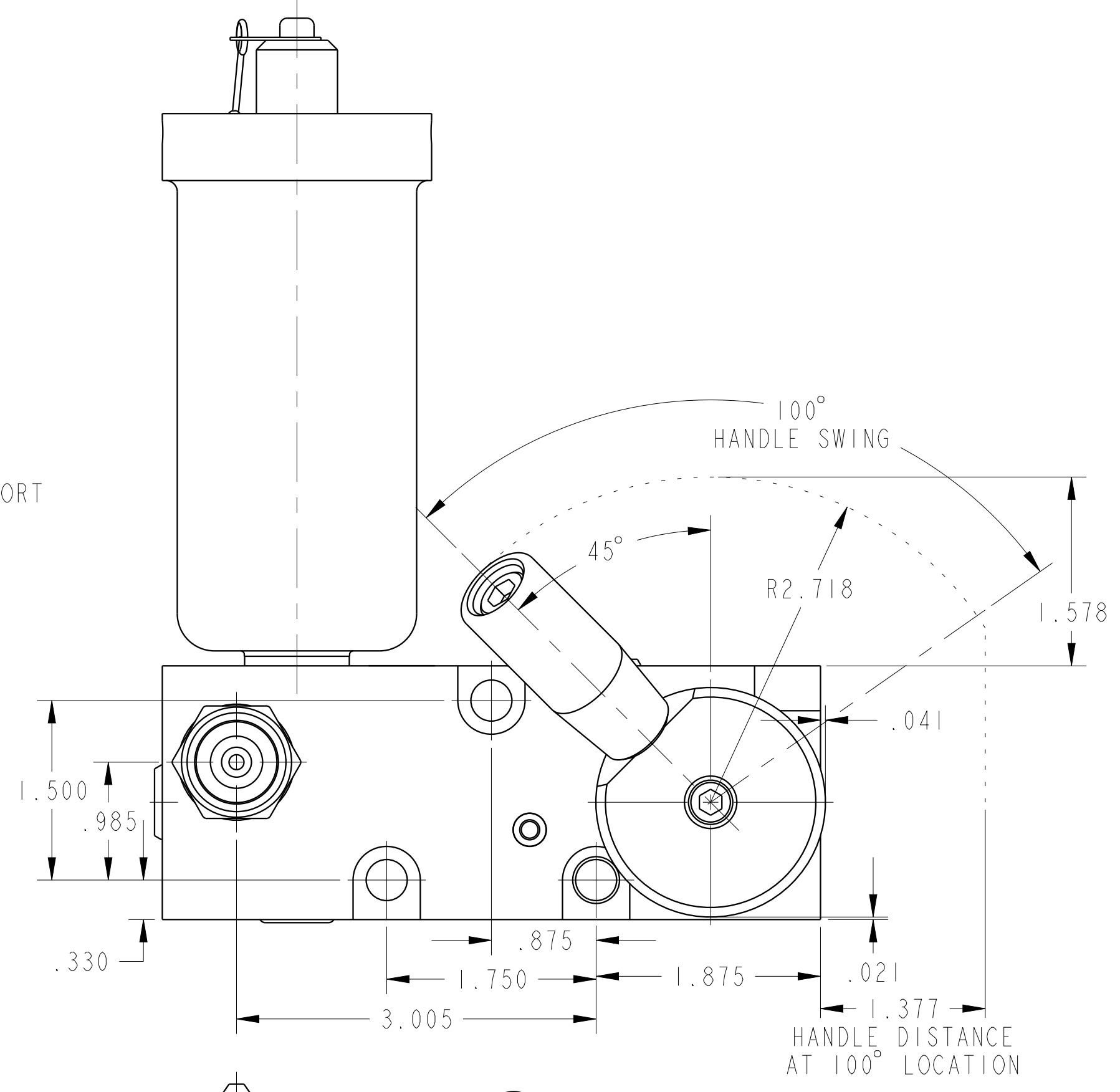
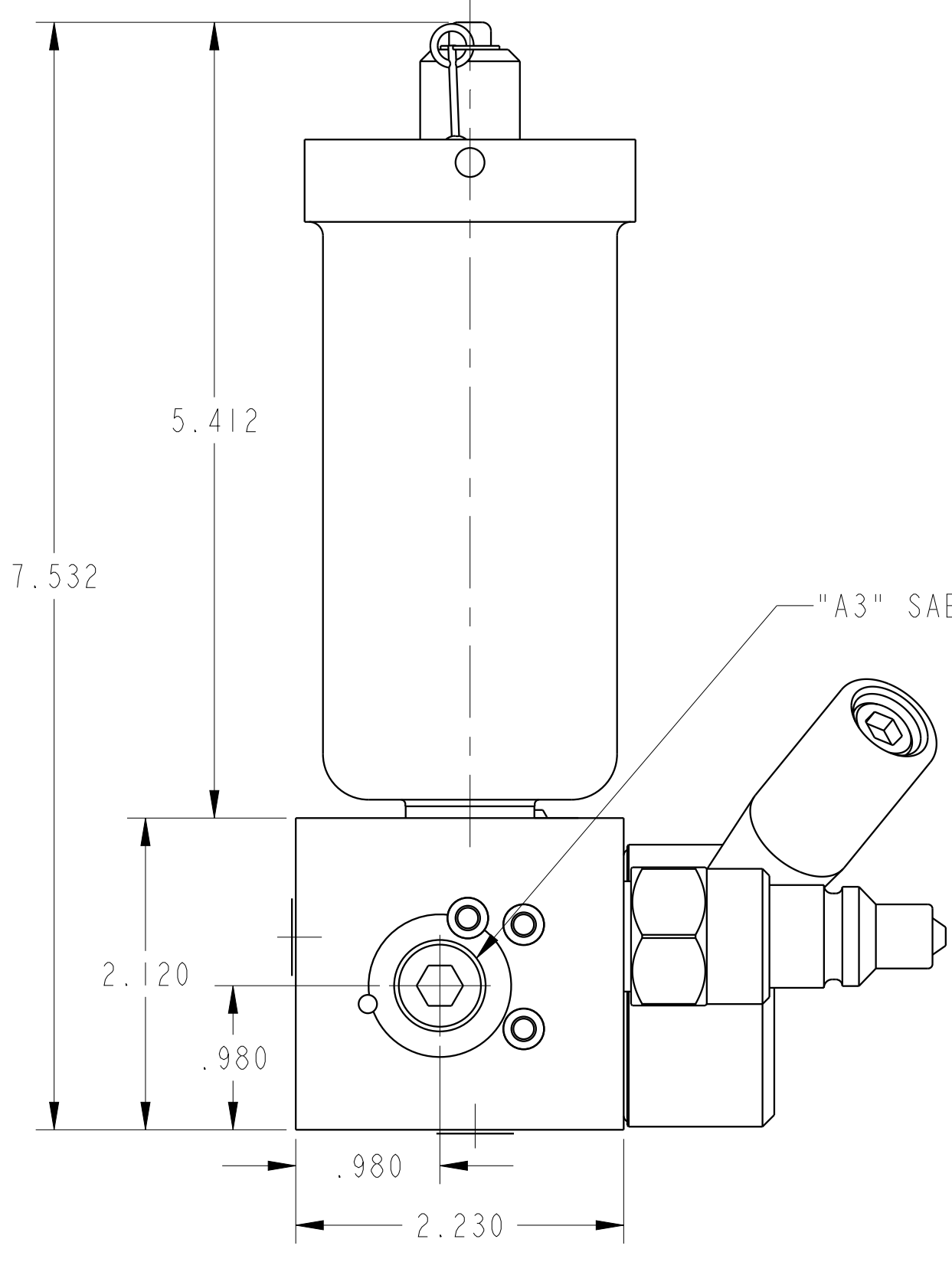


ILC56000606 REV B ECN 3968



CAD CONTROL DRAWING		
	VEKTEK, INC. 1334 E. SIXTH AVE. P.O. BOX 625 EMPORIA, KS. 66801 U.S.A.	

B	3968	RELEASE	MJUST	11/5/19	56000606	C	PD, AUTOSHUTOFF, SA, 3.2 ci
REV	IN ACCORDANCE WITH ECN	EFFECTIVE DATE	REVISED BY	DATE	REFERENCE MODEL	REF REV	*****
DRW BY:	DRAWING STATUS: Released				TOLERANCES DO NOT APPLY		SIZE
DATE:	PRODUCTION APPROVED FOR RELEASED STATUS ONLY				DIMENSIONS ARE NOMINAL		D
							ILC56000606
							REV B