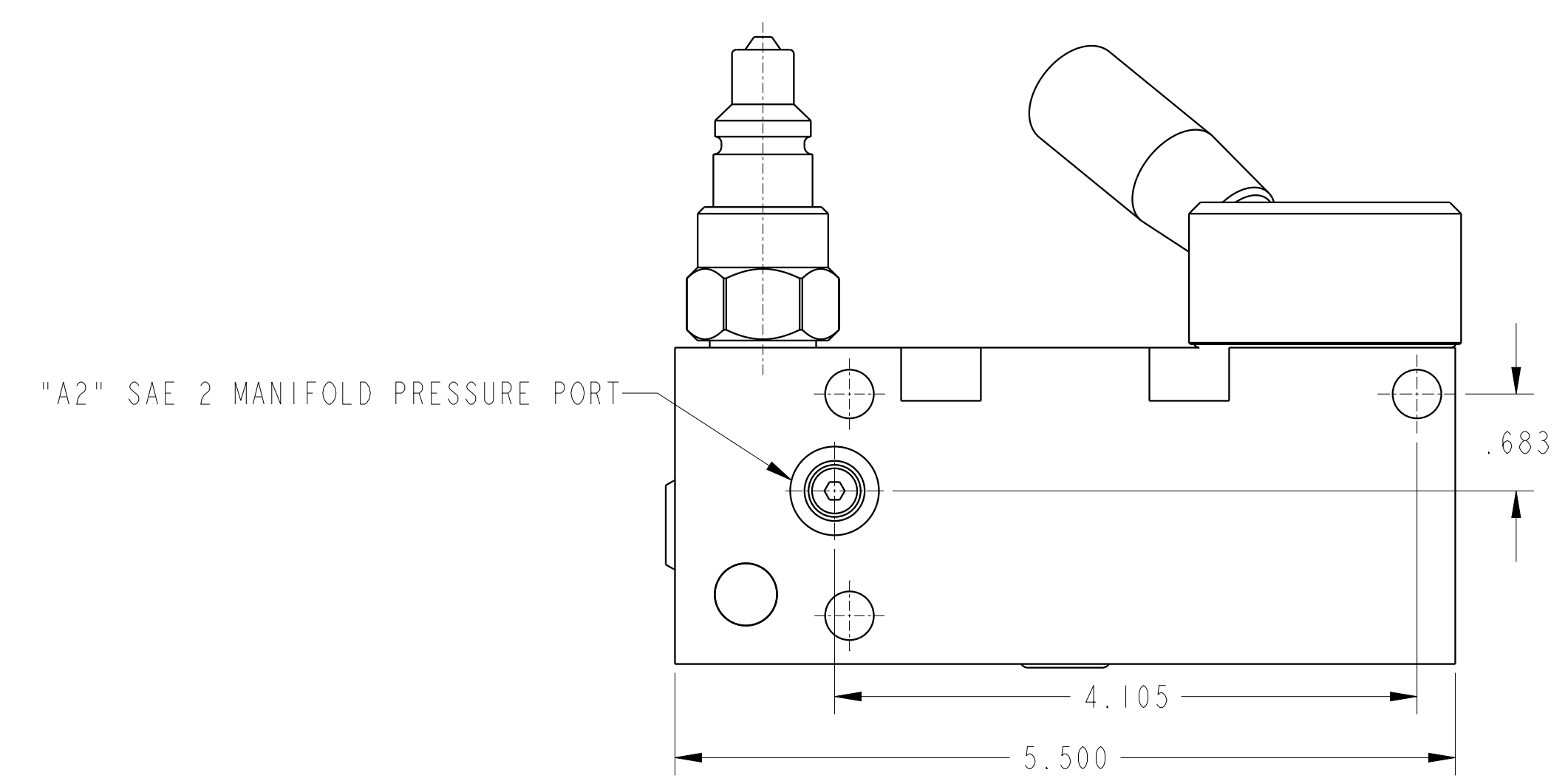
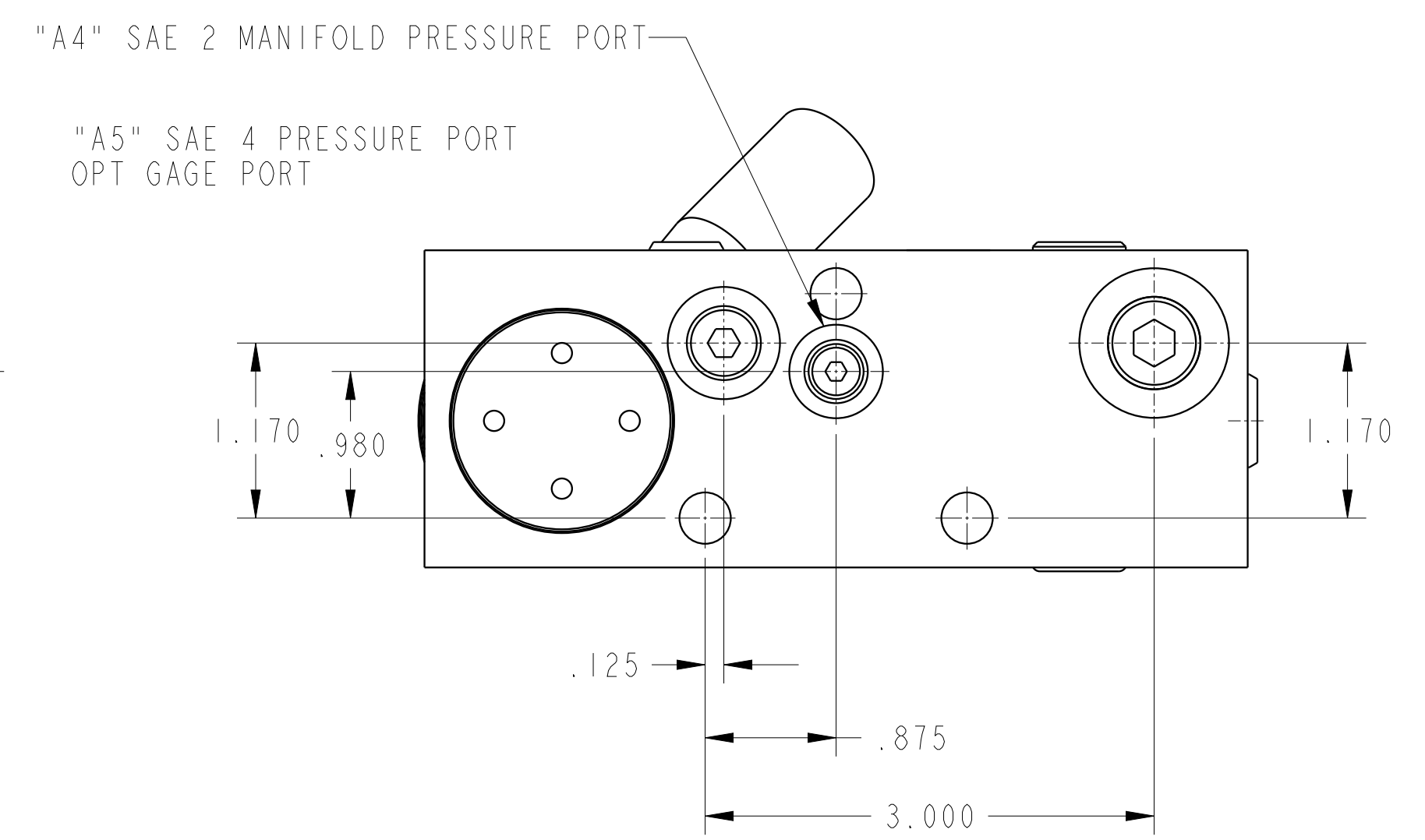
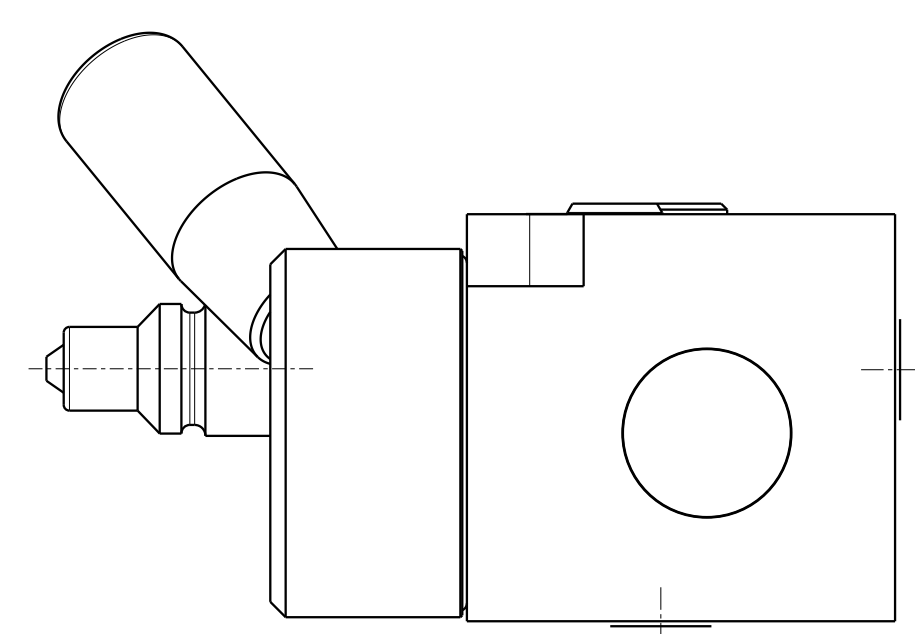
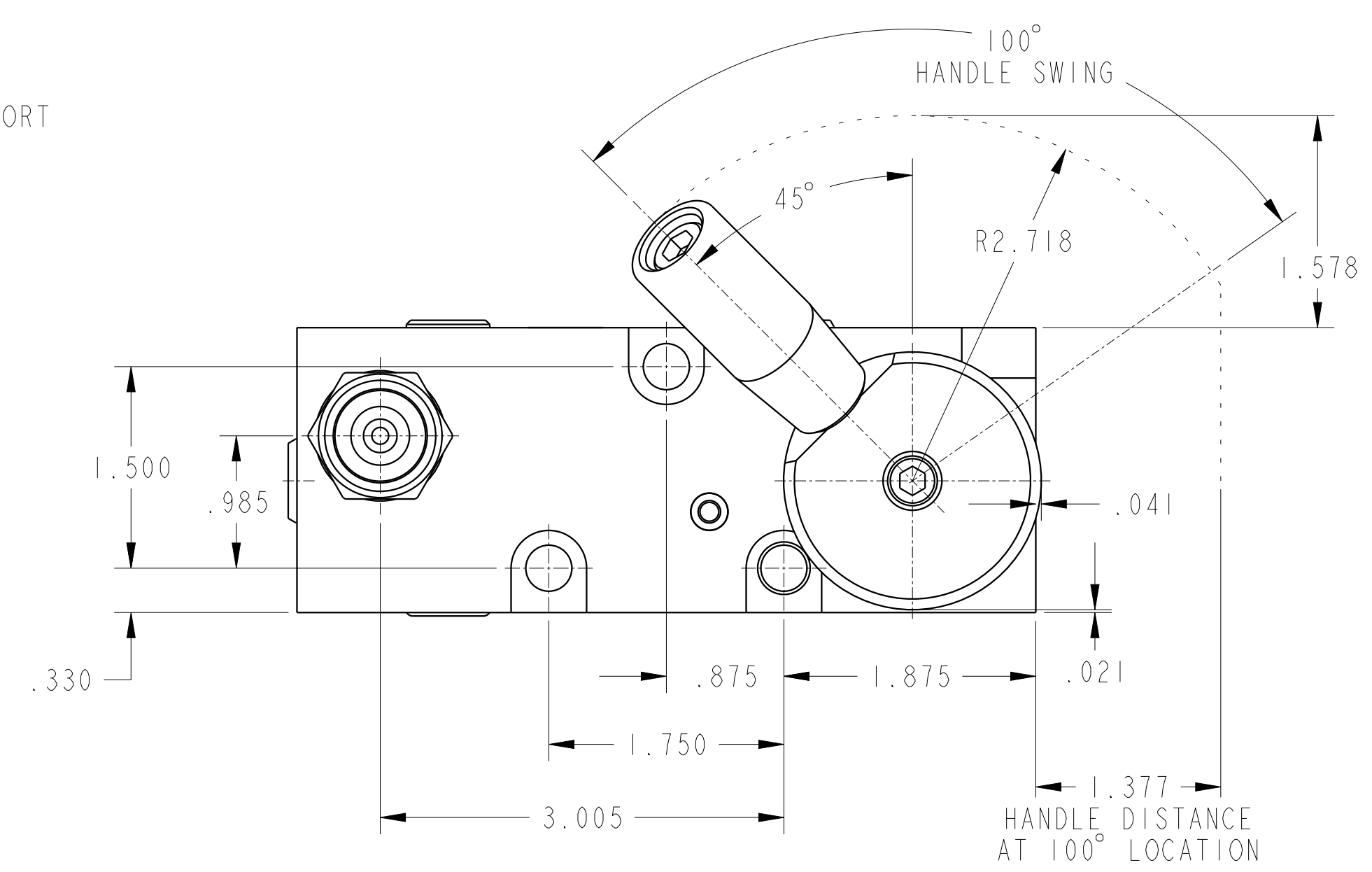
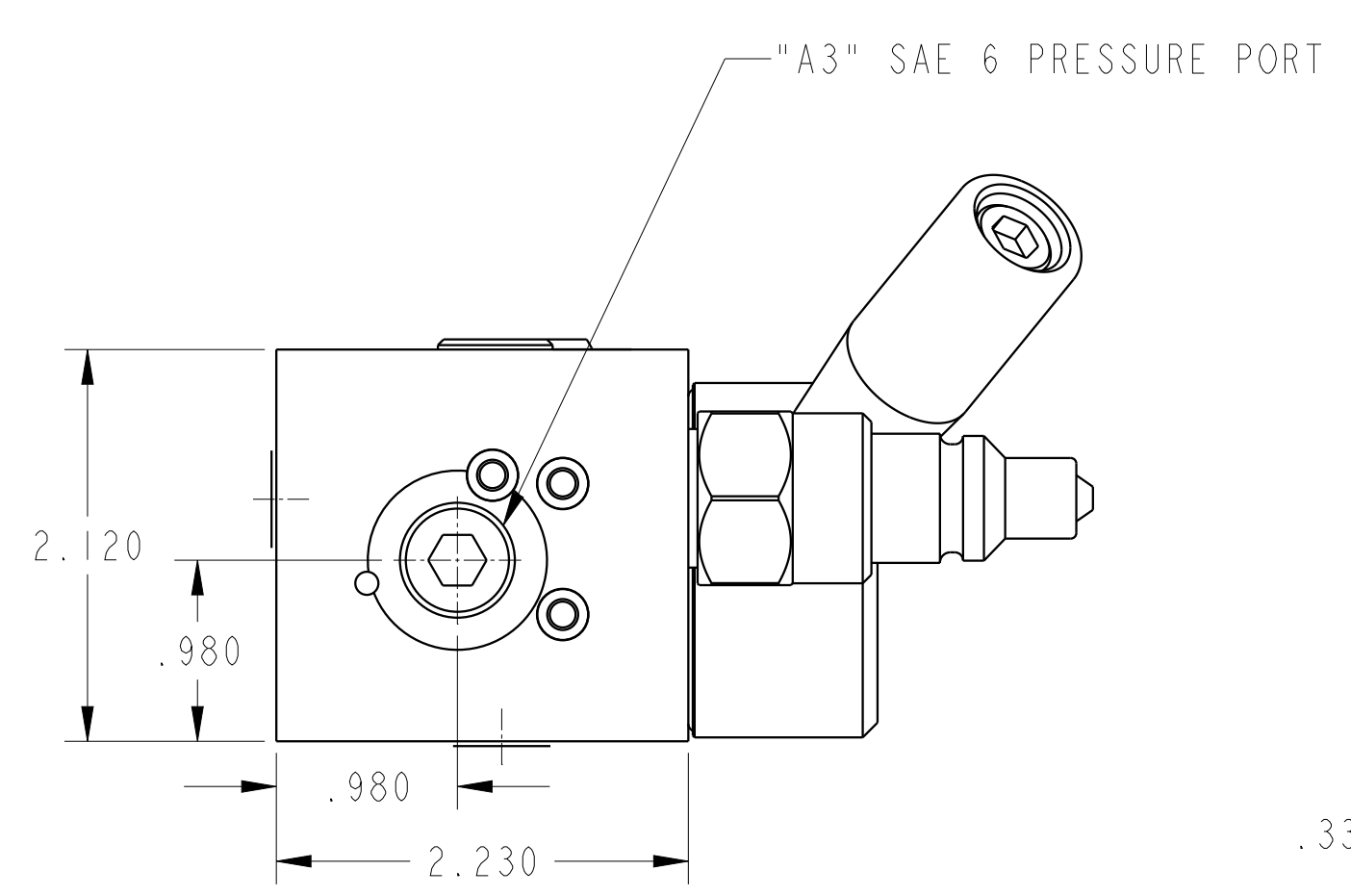
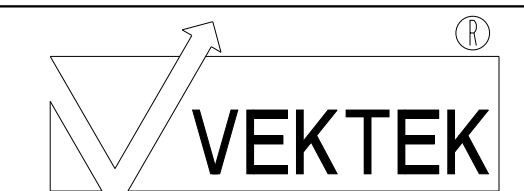


ILC56000608 REV A ECN 5190



CAD CONTROL DRAWING



VEKTEK, INC.
1334 E. SIXTH AVE. P.O. BOX 625
EMPORIA, KS. 66801 U.S.A.

A	5190	RELEASE	RLK	11/17/23
REV	IN ACCORDANCE WITH ECN	EFFECTIVE DATE	REVISED BY	DATE
DRW BY:	RLK	DRAWING STATUS: Released		
DATE:	11/17/23	PRODUCTION APPROVED FOR RELEASED STATUS ONLY		

56000608	A	PD, AUTOSHUTOFF
REFERENCE MODEL	REF REV	*****
TOLERANCES DO NOT APPLY DIMENSIONS ARE NOMINAL		

SIZE	D	REV	A
ILC56000608			