
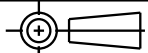
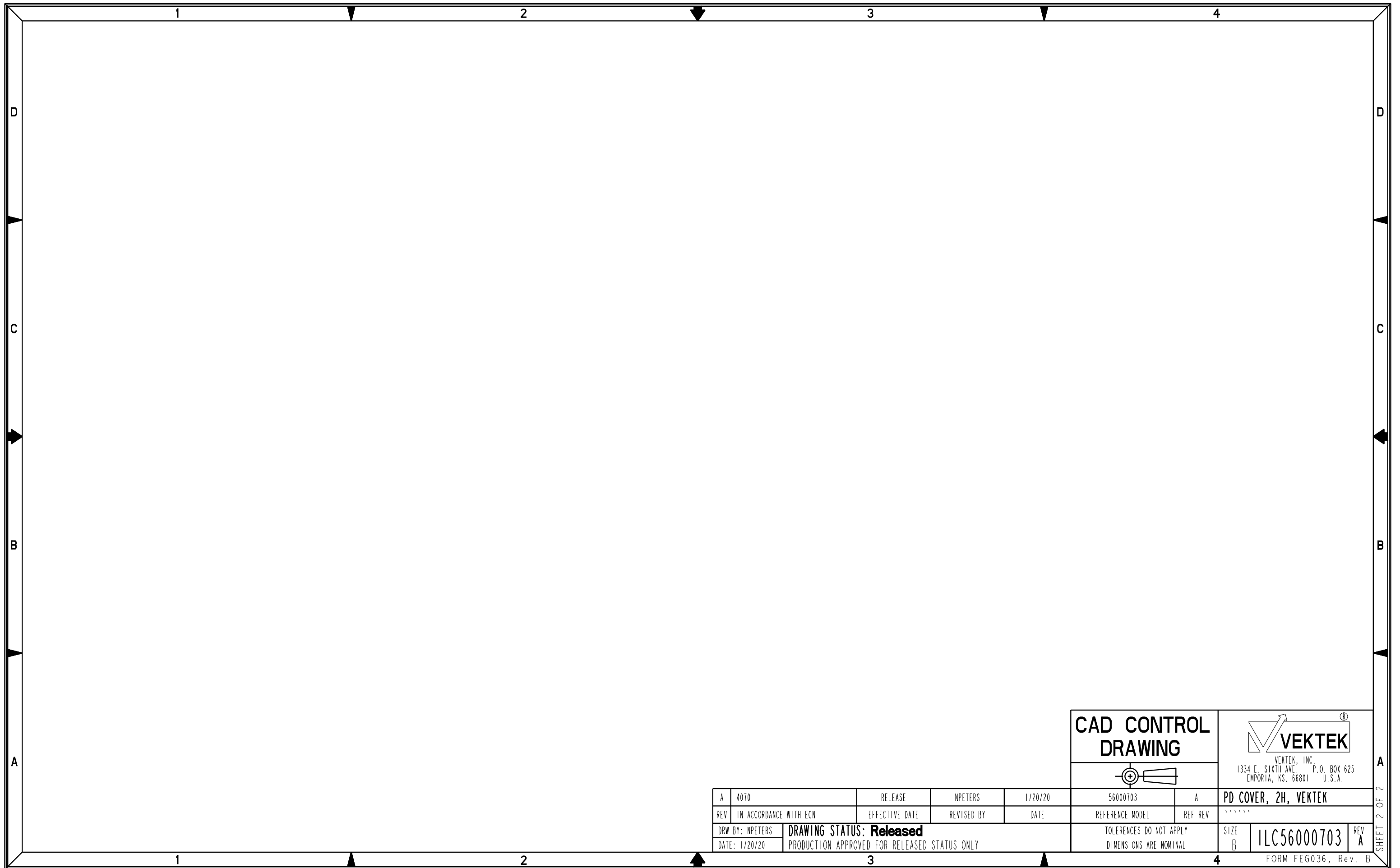


ILC56000703 REV A ECN4070

CAD CONTROL DRAWING		 VEKTEK, INC. 1334 E. SIXTH AVE. P.O. BOX 625 EMPORIA, KS. 66801 U.S.A.	
			
A	4070	RELEASE	NPETERS
REV	IN ACCORDANCE WITH ECN	EFFECTIVE DATE	REVISED BY
DRW BY: NPETERS	DRAWING STATUS: Released		DATE
DATE: 1/20/20	PRODUCTION APPROVED FOR RELEASED STATUS ONLY		
56000703	A	PD COVER, 2H, VEKTEK	
REFERENCE MODEL	REF REV	SIZE	REV
TOLERANCES DO NOT APPLY		B	A
DIMENSIONS ARE NOMINAL		ILC56000703	
		FORM FEG036, Rev. B	

A	4070	RELEASE	NPETERS	1/20/20
REV	IN ACCORDANCE WITH ECN	EFFECTIVE DATE	REVISED BY	DATE
DRW BY: NPETERS	DRAWING STATUS: Released		DATE	
DATE: 1/20/20	PRODUCTION APPROVED FOR RELEASED STATUS ONLY			



CAD CONTROL DRAWING	
	VEKTEK, INC. 1334 E. SIXTH AVE. P.O. BOX 625 EMPORIA, KS. 66801 U.S.A.

A	4070	RELEASE	NPETERS	1/20/20	56000703	A	PD COVER, 2H, VEKTEK	
REV	IN ACCORDANCE WITH ECN	EFFECTIVE DATE	REVISED BY	DATE	REFERENCE MODEL	REF REV	*****	
DRW BY:	NPETERS	DRAWING STATUS: Released			TOLERANCES DO NOT APPLY DIMENSIONS ARE NOMINAL		SIZE	
DATE:	1/20/20	PRODUCTION APPROVED FOR RELEASED STATUS ONLY					B	
							ILC56000703	REV A
							FORM FEG036, Rev. B	

SHEET 2 OF 2