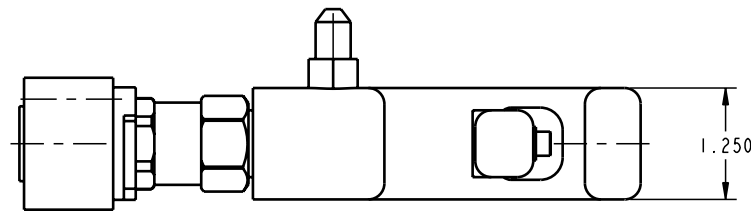
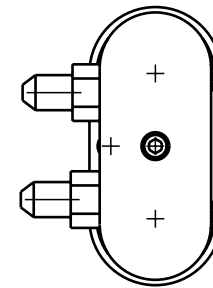
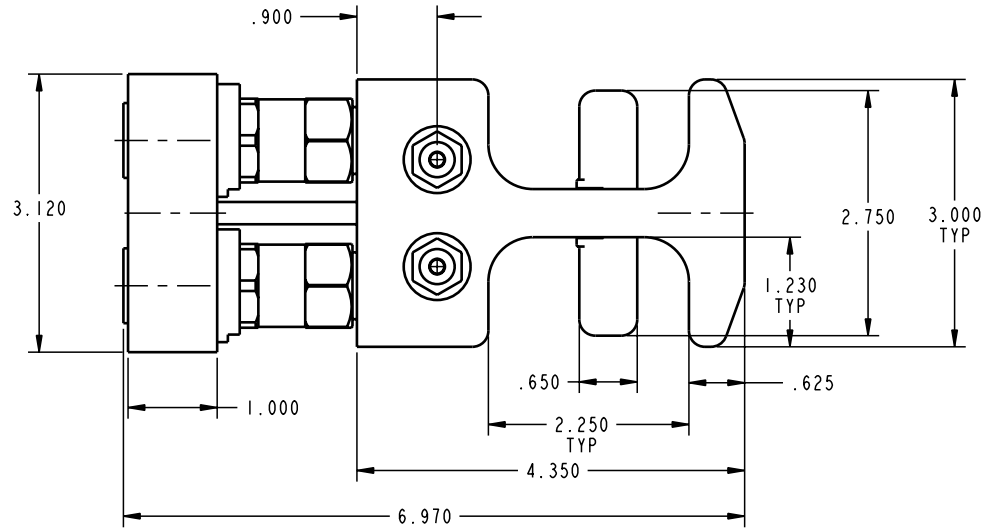
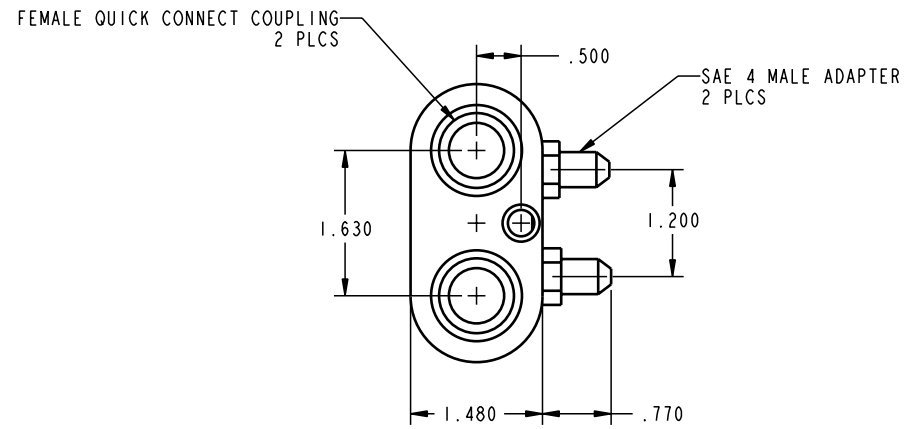


ILC56000800 REV A ECN 1243



CAD CONTROL  
DRAWING



VEKTEK, INC.  
1334 E. SIXTH AVE. P.O. BOX 625  
EMPORIA, KS. 66801 U.S.A.

|         |                        |  |            |          |                         |         |                    |
|---------|------------------------|--|------------|----------|-------------------------|---------|--------------------|
| A       | 1243                   | RELEASE                                      | K. ROEMER  | 02-04-05 | 56000800                | C       | HANDLE, PD, IH, DA |
| REV     | IN ACCORDANCE WITH ECN | EFFECTIVE DATE                               | REVISED BY | DATE     | REFERENCE MODEL         | REF REV |                    |
| DRW BY: | K. ROEMER              | DRAWING STATUS: <b>Released</b>              |            |          | TOLERANCES DO NOT APPLY | SIZE    | REV                |
| DATE:   | 02-04-05               | PRODUCTION APPROVED FOR RELEASED STATUS ONLY |            |          | DIMENSIONS ARE NOMINAL  | D       | A                  |

|          |             |                    |
|----------|-------------|--------------------|
| 56000800 | C           | HANDLE, PD, IH, DA |
| D        | ILC56000800 | A                  |

FORM FEG036, Rev. A

SHEET 1 OF 1