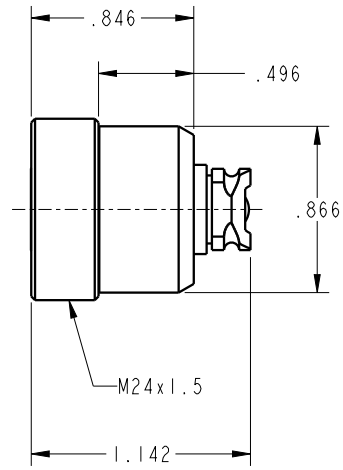
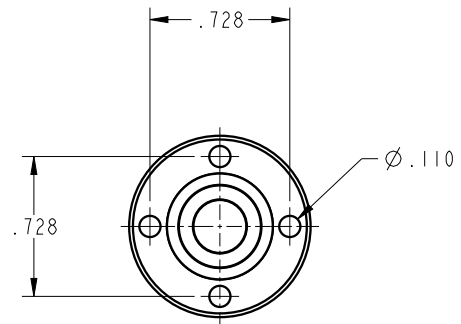


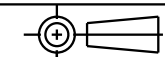
ILC56101500 REV B ECN5840



CAD CONTROL  
DRAWING



VEKTEK, INC.  
1334 E. SIXTH AVE. P.O. BOX 625  
EMPORIA, KS. 66801 U.S.A.



B	5840	RELEASE	ALS	10/27/25	56101500	A	COUPLING ELEMENT, SCREW, MECH, PRESS, NDS
REV	IN ACCORDANCE WITH ECN	EFFECTIVE DATE	REVISED BY	DATE	REFERENCE MODEL	REF REV	*****
DRW BY:	TWA	DRAWING STATUS: Released			TOLERANCES DO NOT APPLY		SIZE
DATE:	7/27/16	PRODUCTION APPROVED FOR RELEASED STATUS ONLY			DIMENSIONS ARE NOMINAL		B
							ILC56101500 REV B

FORM FEG036, Rev. B

SHEET 1 OF 1