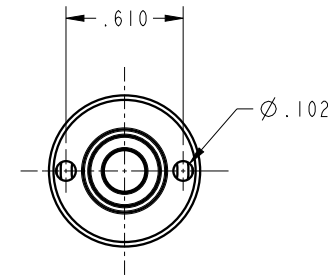
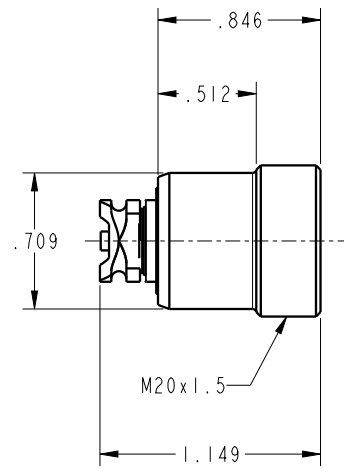



ILC56102300 REV B ECN5840



CAD CONTROL DRAWING		
	VEKTEK, INC. 1334 E. SIXTH AVE. P.O. BOX 625 EMPORIA, KS. 66801 U.S.A.	

B	5840	RELEASE	ALS	10/27/25	56102300	A	COUPLING ELEMENT, SCREW, MECH, DEPRESS, ND3
REV	IN ACCORDANCE WITH ECN	EFFECTIVE DATE	REVISED BY	DATE	REFERENCE MODEL	REF REV	*****
DRW BY:	TWA	DRAWING STATUS: Released			TOLERANCES DO NOT APPLY		SIZE
DATE:	7/28/16	PRODUCTION APPROVED FOR RELEASED STATUS ONLY			DIMENSIONS ARE NOMINAL		B
							ILC56102300 REV B

FORM FEG036, Rev. B

SHEET 1 OF 1