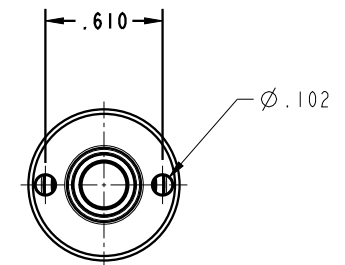
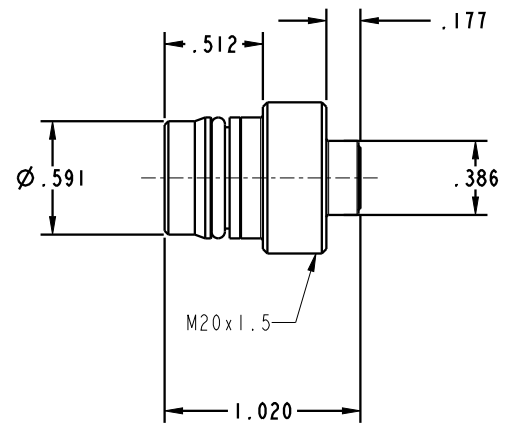



ILC56112300 REV C ECN5840



CAD CONTROL DRAWING		
	VEKTEK, INC. 1334 E. SIXTH AVE. P.O. BOX 625 EMPORIA, KS. 66801 U.S.A.	

C	5840	RELEASE	ALS	10/27/25	56112300	A	COUPLING ELEMENT, SCREW, NIPPLE, DEPRESS, HD3
REV	IN ACCORDANCE WITH ECN	EFFECTIVE DATE	REVISED BY	DATE	REFERENCE MODEL	REF REV	
DRW BY:	TWA	DRAWING STATUS: Released PRODUCTION APPROVED FOR RELEASED STATUS ONLY			TOLERANCES DO NOT APPLY DIMENSIONS ARE NOMINAL		SIZE B ILC56112300 REV C
DATE:	7/28/16						FORM FEG036, Rev. B

SHEET 1 OF 1