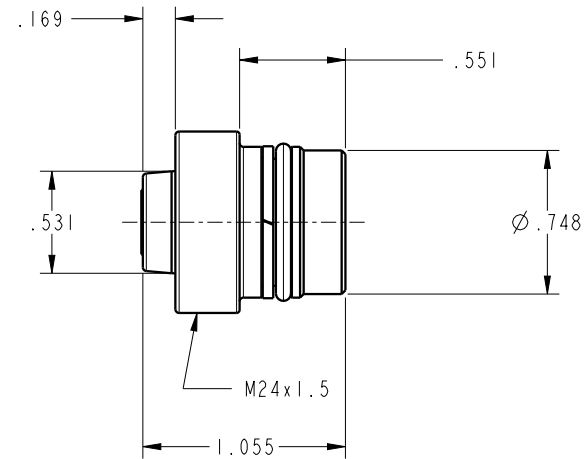
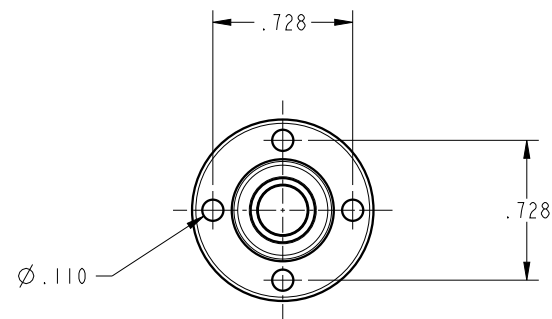


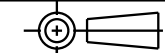
ILC56112500 REV B ECN5840



**CAD CONTROL
DRAWING**



VEKTEK, INC.
1334 E. SIXTH AVE. P.O. BOX 625
EMPORIA, KS. 66801 U.S.A.



B	5840	RELEASE	ALS	10/27/25	56112500	A	COUPLING ELEMENT, SCREW, NIPPLE, DEPRESS, MDS
REV	IN ACCORDANCE WITH ECN	EFFECTIVE DATE	REVISED BY	DATE	REFERENCE MODEL	REF REV	*****
DRW BY:	TWA	DRAWING STATUS: Released			TOLERANCES DO NOT APPLY DIMENSIONS ARE NOMINAL		SIZE B
DATE:	7/27/16	PRODUCTION APPROVED FOR RELEASED STATUS ONLY			ILC56112500		REV B

FORM FEG036, Rev. B

SHEET 1 OF 1