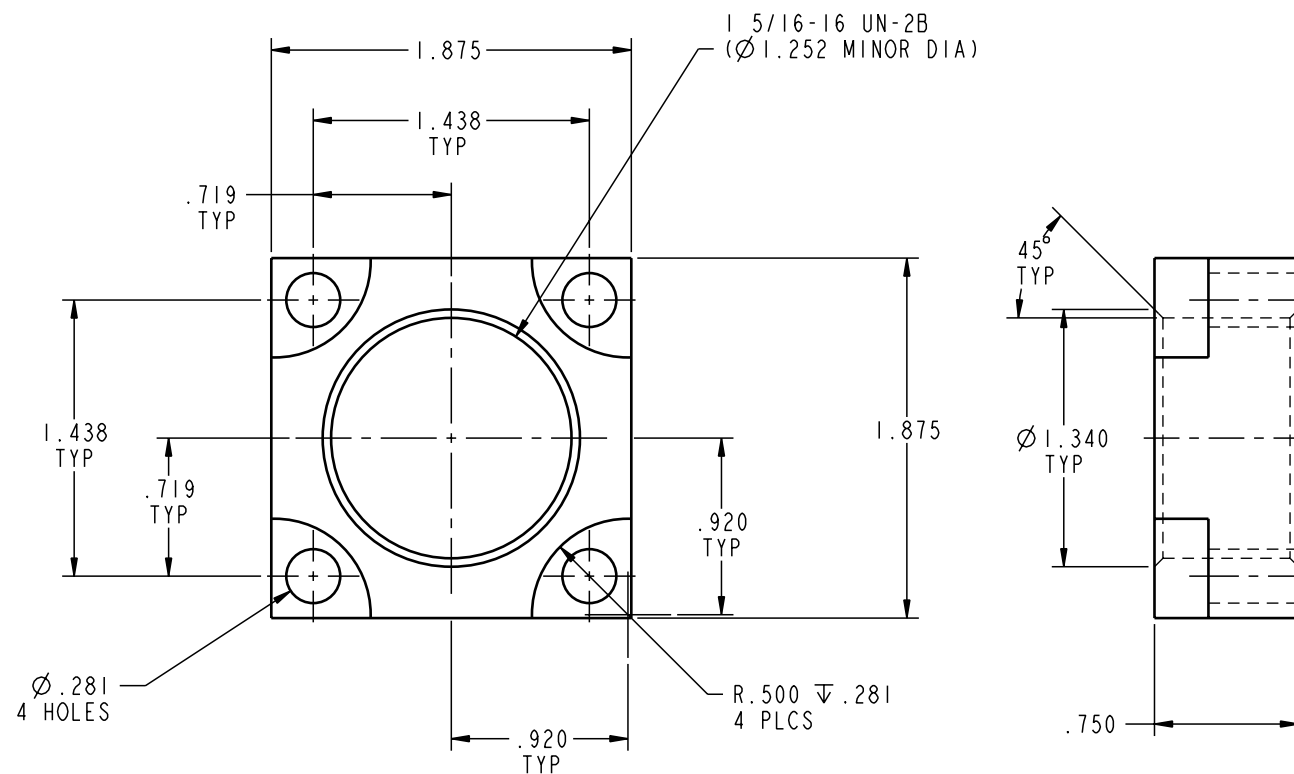


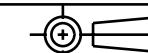
ILC64011300 REV A ECN 717



CAD CONTROL DRAWING



VEKTEK, INC.
1334 E. SIXTH AVE. P.O. BOX 625
EMPORIA, KS. 66801 U.S.A.



A	717	RELEASE	K. ROEMER	06-13-05	64011300	C	FLANGE, MOUNTING, 1 5/16-16
REV	IN ACCORDANCE WITH ECN	EFFECTIVE DATE	REVISED BY	DATE	REFERENCE MODEL	REF REV	
DRW BY:	KR	DRAWING STATUS: Released			TOLERANCES DO NOT APPLY DIMENSIONS ARE NOMINAL		SIZE B
DATE:	08/28/02	PRODUCTION APPROVED FOR RELEASED STATUS ONLY					ILC64011300 REV A

FORM FEG036, Rev. A

SHEET 1 OF 1