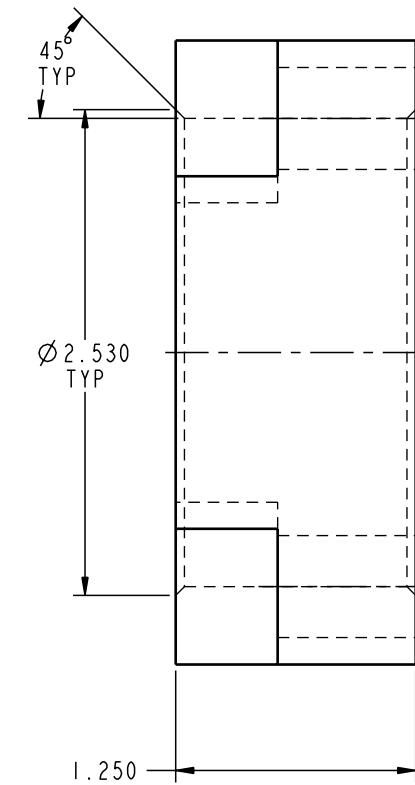
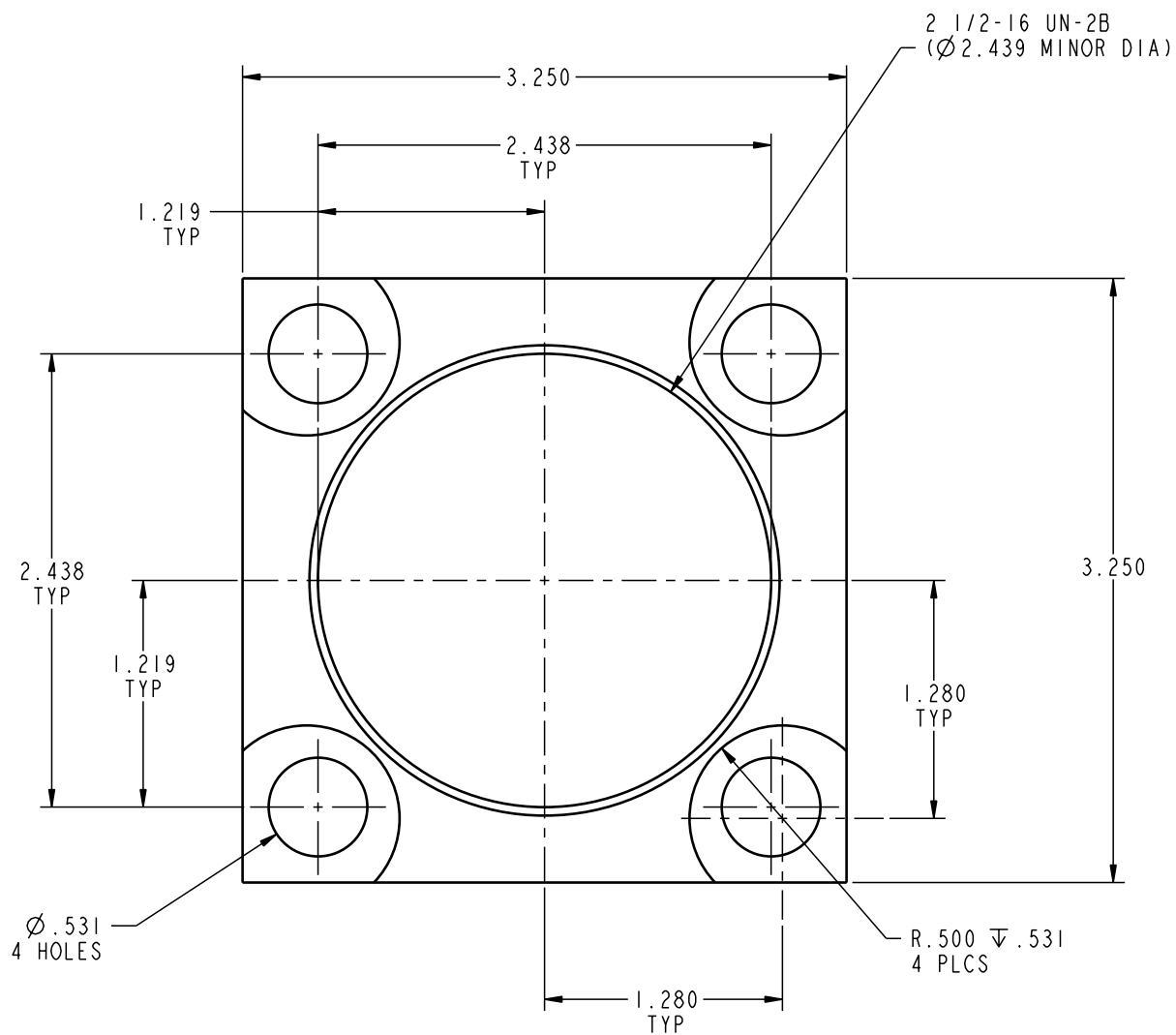


ILC64012500 REV A ECN 717



CAD CONTROL  
DRAWING



VEKTEK, INC.  
1334 E. SIXTH AVE. P.O. BOX 625  
EMPORIA, KS. 66801 U.S.A.

|         |                        |  |            |          |   |         |                            |
|---------|------------------------|--|------------|----------|---|---------|----------------------------|
| A       | 717                    | RELEASE                                      | K. ROEMER  | 06-13-05 | 64012500  | D       | FLANGE, MOUNTING, 2 1/2-16 |
| REV     | IN ACCORDANCE WITH ECN | EFFECTIVE DATE                               | REVISED BY | DATE     | REFERENCE MODEL                                   | REF REV |                            |
| DRW BY: | KR                     | DRAWING STATUS: <b>Released</b>              |            |          | TOLERANCES DO NOT APPLY<br>DIMENSIONS ARE NOMINAL |         | SIZE<br>B                  |
| DATE:   | 08/28/02               | PRODUCTION APPROVED FOR RELEASED STATUS ONLY |            |          |   |         | ILC64012500 REV<br>A       |

FORM FEG036, Rev. A

SHEET 1 OF 1