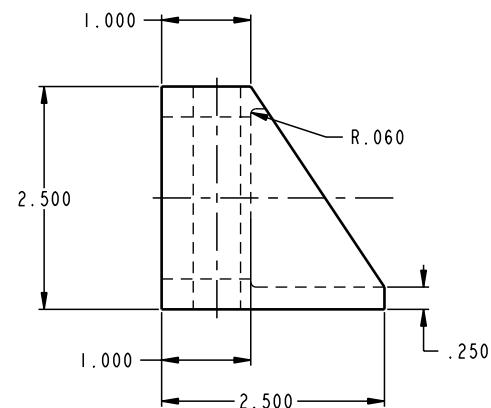
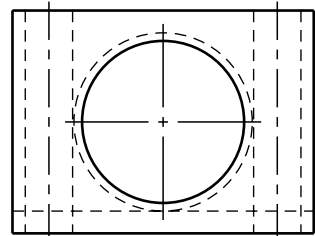
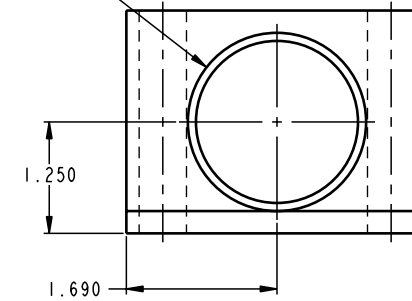


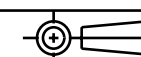
ILC64031800 REV A ECN 716



1 7/8-16 UN-2B  
 ⌊ ⌀2.000 TO DEPTH SHOWN



CAD CONTROL  
 DRAWING



VEKTEK, INC.  
 1334 E. SIXTH AVE. P.O. BOX 625  
 EMPORIA, KS. 66801 U.S.A.

A	716	RELEASE	K. ROEMER	06-13-05	64031800	E	BRACKET, MOUNTING, 1 7/8-16
REV	IN ACCORDANCE WITH ECN	EFFECTIVE DATE	REVISED BY	DATE	REFERENCE MODEL	REF REV	
DRW BY:	KR	DRAWING STATUS: <b>Released</b>			TOLERANCES DO NOT APPLY		SIZE
DATE:	08/28/02	PRODUCTION APPROVED FOR RELEASED STATUS ONLY			DIMENSIONS ARE NOMINAL		D ILC64031800 REV A

FORM FEG036, Rev. A

SHEET 1 OF 1