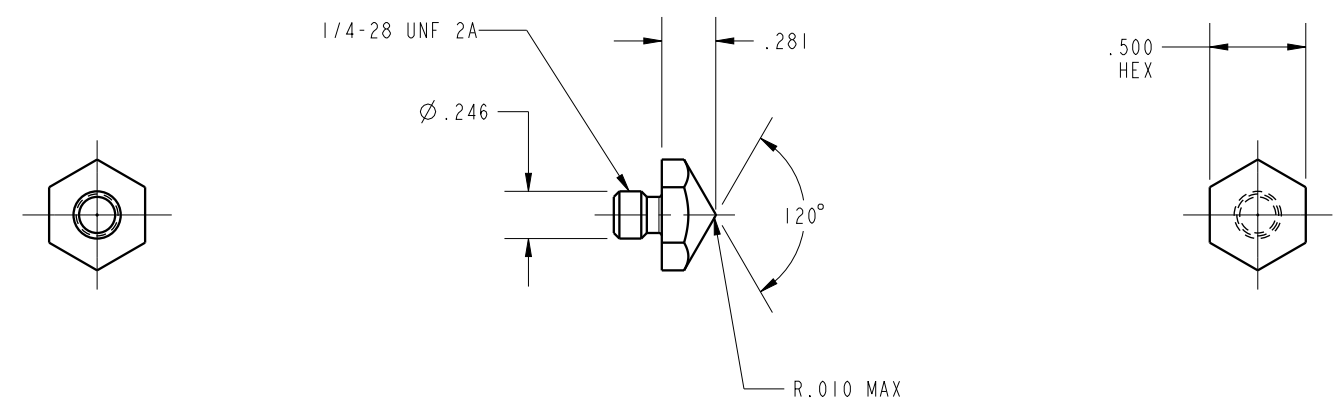

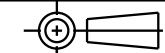


ILC64200420 REV A ECN 3025
 SCALE 1.000



CAD CONTROL DRAWING		 VEKTEK, INC. 1334 E. SIXTH AVE. P.O. BOX 625 EMPORIA, KS. 66801 U.S.A.	
			

A	3025	RELEASE	TWA	5/16/16	64200420	A	END EFFECTOR, CONICAL, 1/4-28
REV	IN ACCORDANCE WITH ECN	EFFECTIVE DATE	REVISED BY	DATE	REFERENCE MODEL	REF REV	''''
DRW BY:	TWA	DRAWING STATUS: Released			TOLERANCES DO NOT APPLY		SIZE
DATE:	5/16/16	PRODUCTION APPROVED FOR RELEASED STATUS ONLY			DIMENSIONS ARE NOMINAL		B
							ILC64200420 REV A FORM FEG036, Rev. B