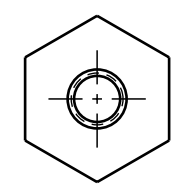
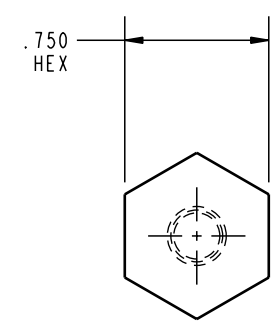
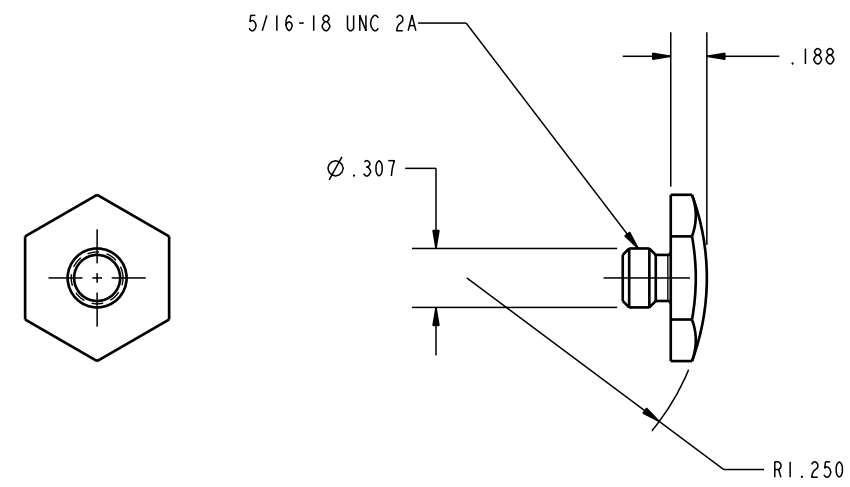



ILC64210510 REV A ECN 656  
SCALE 1.000



**CAD CONTROL DRAWING**



VEKTEK, INC.  
1334 E. SIXTH AVE. P.O. BOX 625  
EMPORIA, KS. 66801 U.S.A.

A	656	RELEASE	K. ROEMER	06-14-05	64210510	C	END EFFECTOR, SPHERICAL, 5/16-18
REV	IN ACCORDANCE WITH ECN	EFFECTIVE DATE	REVISED BY	DATE	REFERENCE MODEL	REF REV	
DRW BY:	KR	<b>DRAWING STATUS: Released</b>			TOLERANCES DO NOT APPLY DIMENSIONS ARE NOMINAL		SIZE B
DATE:	06/10/02	PRODUCTION APPROVED FOR RELEASED STATUS ONLY					ILC64210510 REV A

FORM FEG036, Rev. A