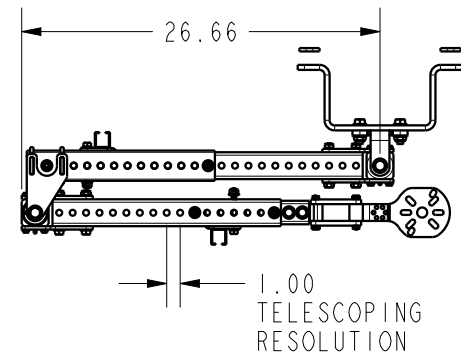
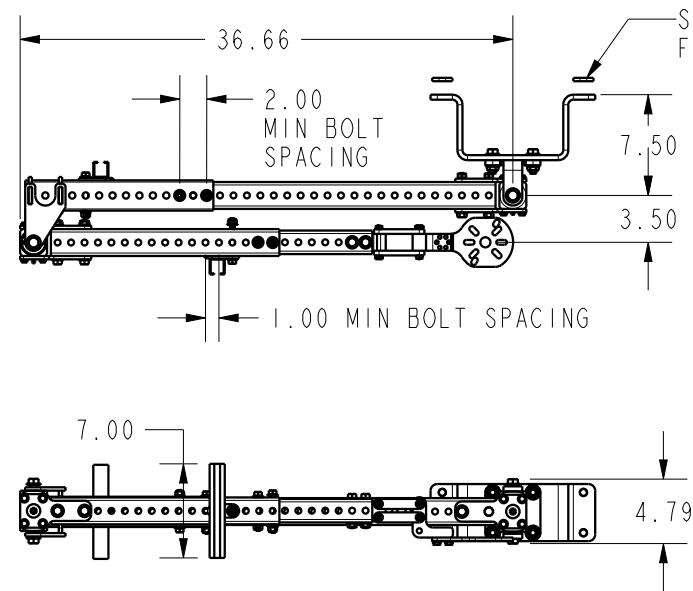


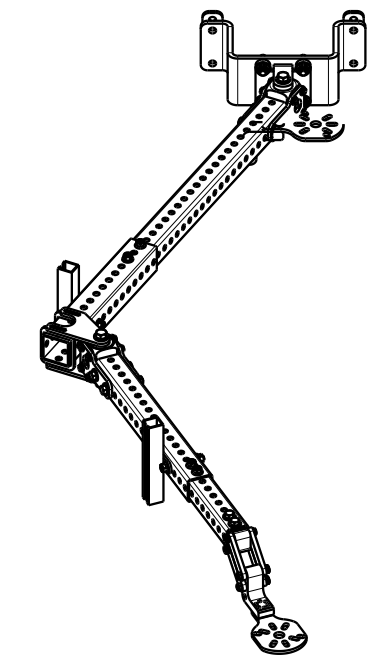
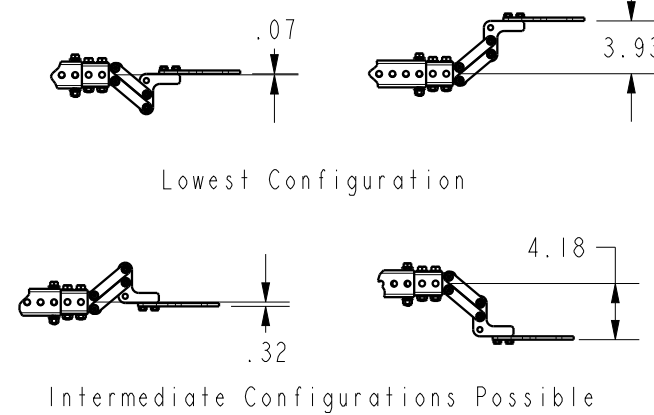
Shortest Telescoping Configuration



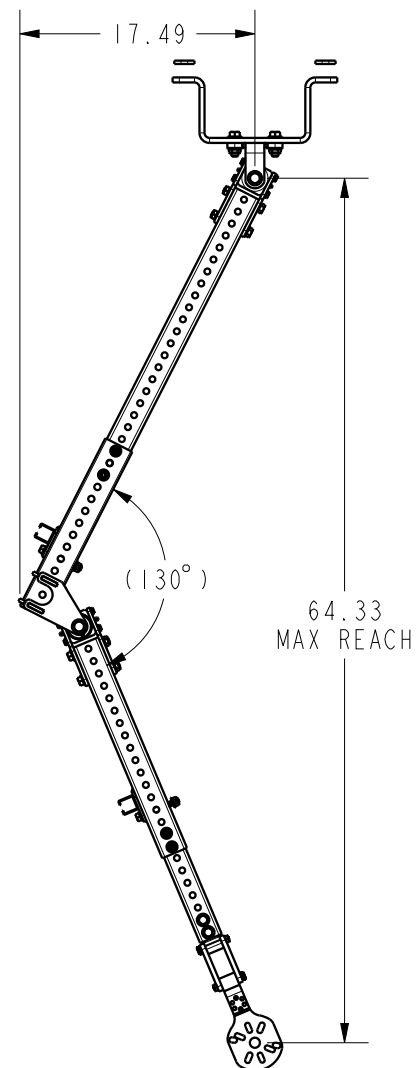
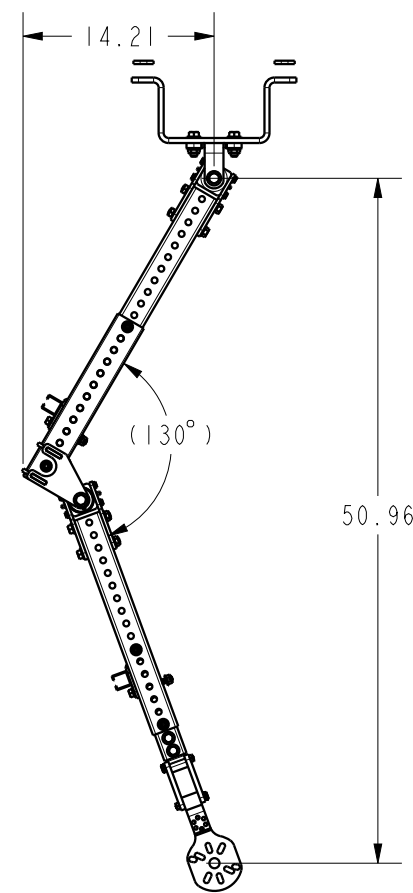
Longest Telescoping Configuration



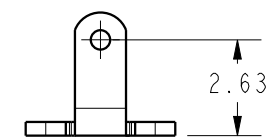
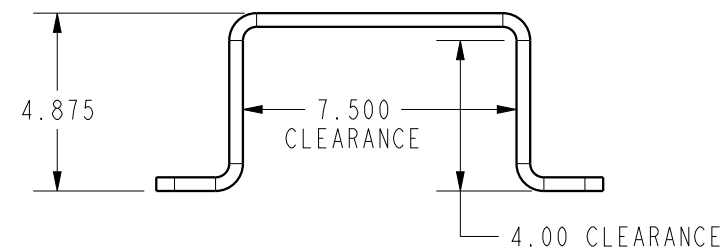
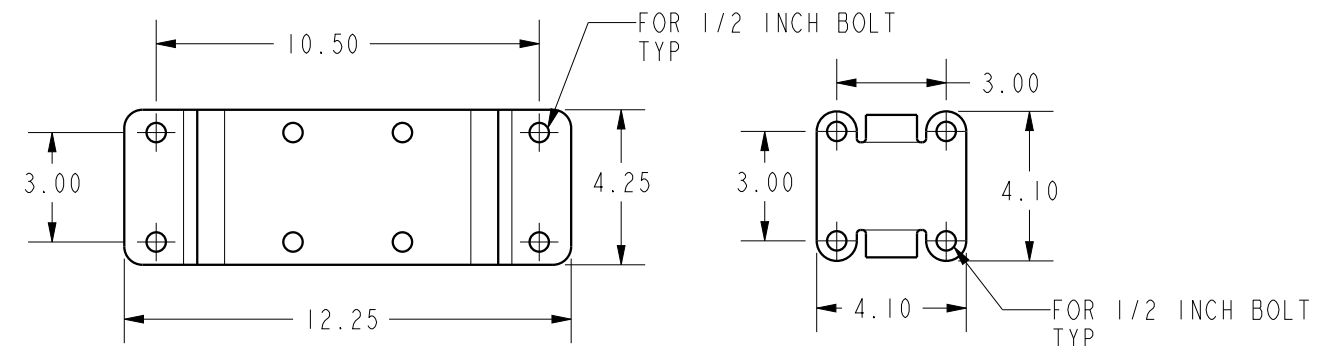
SANDWICH/BACK-UP PLATES ARE INCLUDED FOR SINGLE ARM INSTALLATION



ILC64405001 REV A ECN 4632



MOUNTING OPTIONS



CAD CONTROL DRAWING



VEKTEK, INC.  
1334 E. SIXTH AVE. P.O. BOX 625  
EMPORIA, KS. 66801 U.S.A.

A	4632	RELEASE	RLK	2/30/22	64405001	A	ROTARY UNION ARM
REV	IN ACCORDANCE WITH ECN	EFFECTIVE DATE	REVISED BY	DATE	REFERENCE MODEL	REF REV	*****
DRW BY:	RLK	DRAWING STATUS: Released			TOLERANCES DO NOT APPLY DIMENSIONS ARE NOMINAL		SIZE B
DATE:	2/30/22	PRODUCTION APPROVED FOR RELEASED STATUS ONLY			ILC64405001		REV A

FORM FEG036, Rev. B

SHEET 1 OF 1