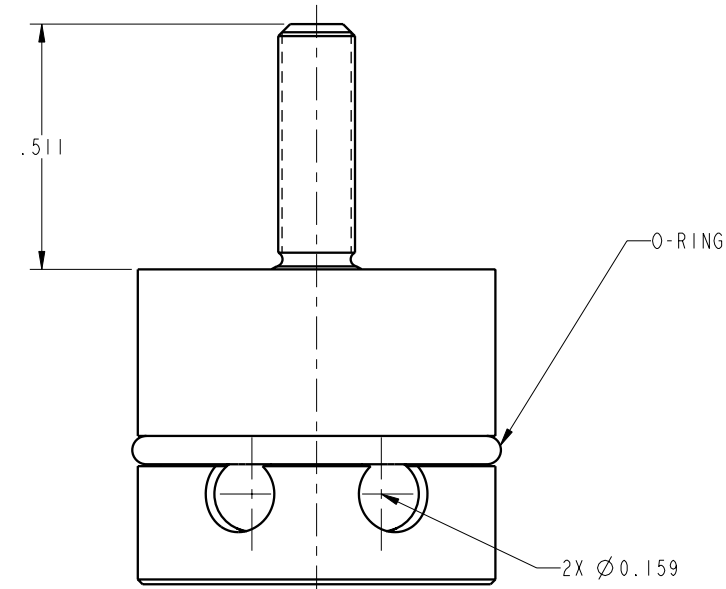
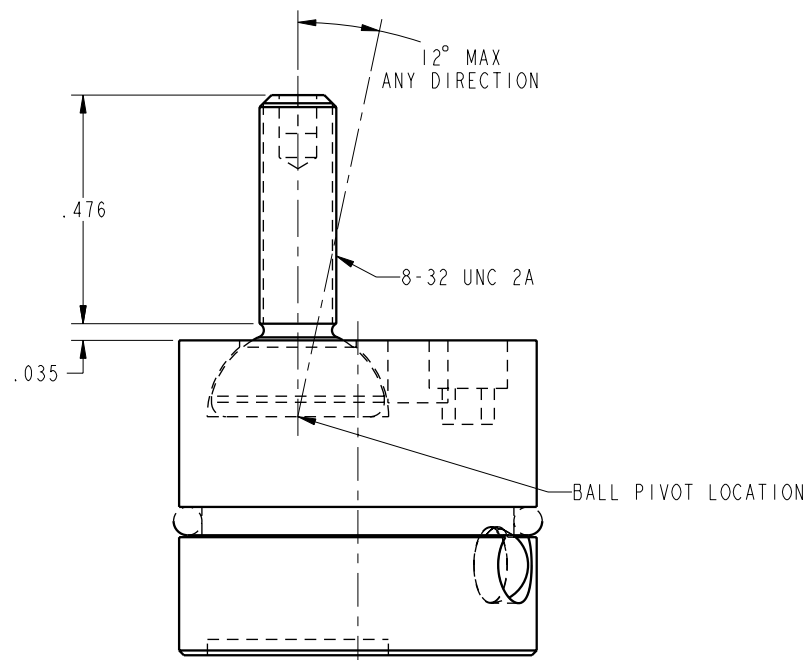

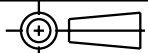


ILC66091201 REV A ECN 2694



CAD CONTROL DRAWING		 VEKTEK, INC. 1334 E. SIXTH AVE. P.O. BOX 625 EMPORIA, KS. 66801 U.S.A.	
	66091201 REFERENCE MODEL	A REF REV	ASSY, DURA PIN, 12, LT
A 2694 REV IN ACCORDANCE WITH ECN DATE: 07-18-14	RELEASE EFFECTIVE DATE	DLB REVISED BY	07/22/14 DATE
DRAWING STATUS: Released PRODUCTION APPROVED FOR RELEASED STATUS ONLY		TOLERANCES DO NOT APPLY DIMENSIONS ARE NOMINAL	SIZE B ILC66091201 REV A

A	2694	RELEASE	DLB	07/22/14	66091201	A	ASSY, DURA PIN, 12, LT
REV	IN ACCORDANCE WITH ECN	EFFECTIVE DATE	REVISED BY	DATE	REFERENCE MODEL	REF REV	*****
DRW BY:	DLB	DRAWING STATUS: Released		TOLERANCES DO NOT APPLY		SIZE	ILC66091201 REV A
DATE:	07-18-14	PRODUCTION APPROVED FOR RELEASED STATUS ONLY		DIMENSIONS ARE NOMINAL		B	FORM FEG036, Rev. B

SHEET 1 OF 1