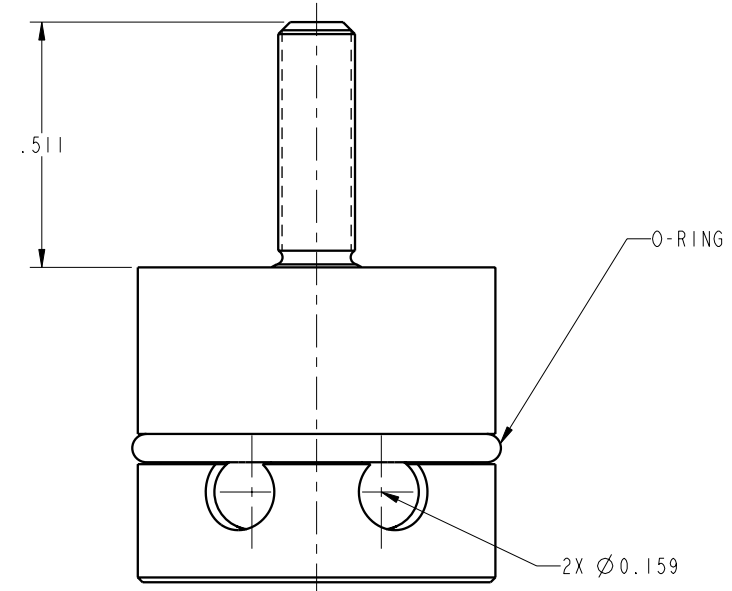
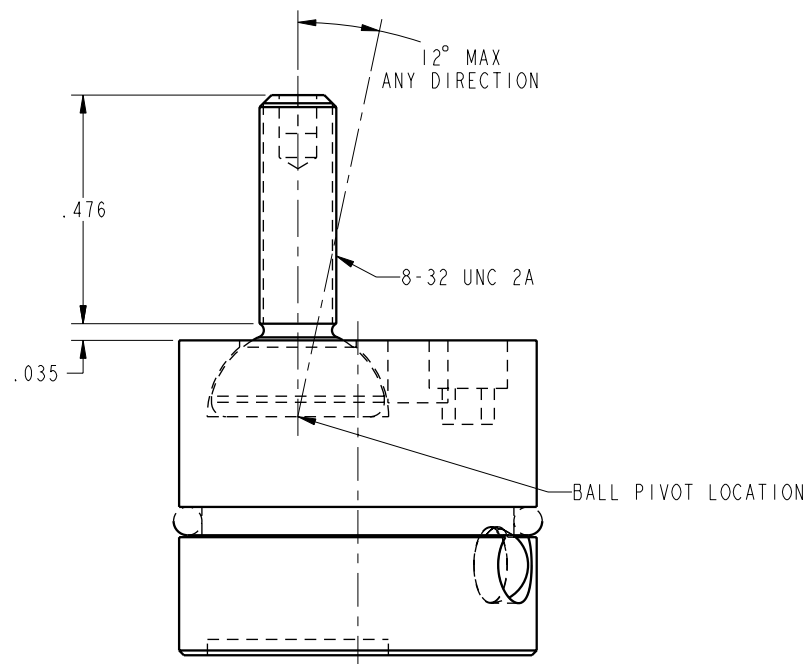

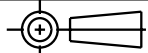


ILC66091203 REV A ECN 2694



<b>CAD CONTROL DRAWING</b>		 VEKTEK, INC. 1334 E. SIXTH AVE. P.O. BOX 625 EMPORIA, KS. 66801 U.S.A.	
			
A 2694	RELEASE	DLB	07/22/14
REV IN ACCORDANCE WITH ECN	EFFECTIVE DATE	REVISED BY	DATE
DRW BY: DLB	<b>DRAWING STATUS: Released</b>		66091203 A
DATE: 07-18-14	PRODUCTION APPROVED FOR RELEASED STATUS ONLY		ASSY, DURA PIN, 12, HVY
TOLERANCES DO NOT APPLY DIMENSIONS ARE NOMINAL		SIZE B	ILC66091203 REV A
			FORM FEG036, Rev. B

SHEET 1 OF 1