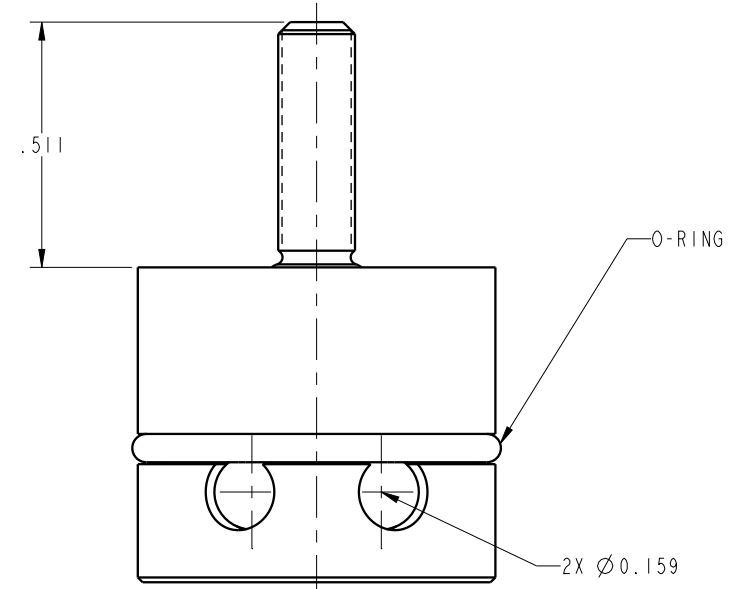
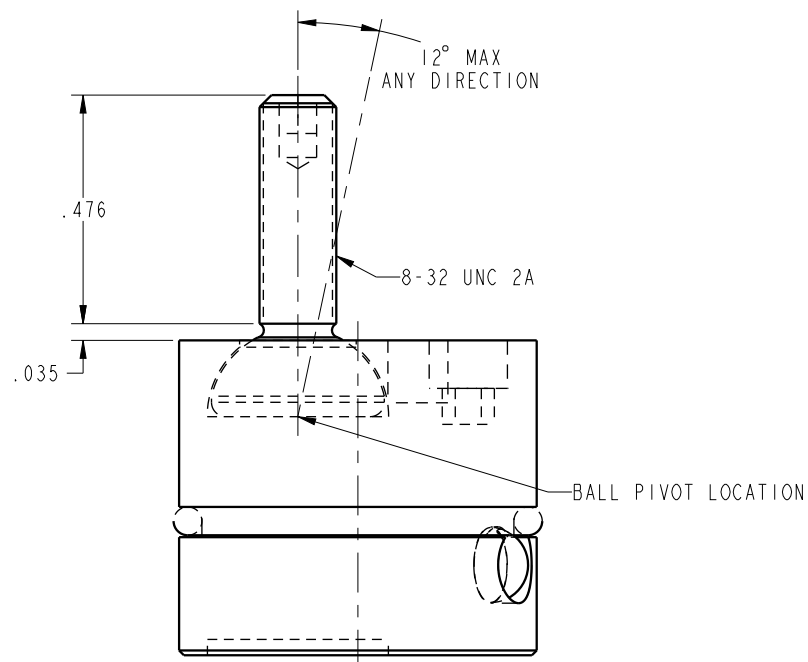



ILC66091205 REV A ECN 2960



CAD CONTROL DRAWING	 VEKTEK, INC. 1334 E. SIXTH AVE. P.O. BOX 625 EMPORIA, KS. 66801 U.S.A.

A	2960	RELEASE	MAJ	1/21/16	66091205	A	ASSY, DURA PIN, 12, XXHVY
REV	IN ACCORDANCE WITH ECN	EFFECTIVE DATE	REVISED BY	DATE	REFERENCE MODEL	REF REV	*****
DRW BY:	MAJ	DRAWING STATUS: Released			TOLERANCES DO NOT APPLY DIMENSIONS ARE NOMINAL		SIZE B
DATE:	1-21-16	PRODUCTION APPROVED FOR RELEASED STATUS ONLY					ILC66091205 REV A

FORM FEG036, Rev. B

SHEET 1 OF 1