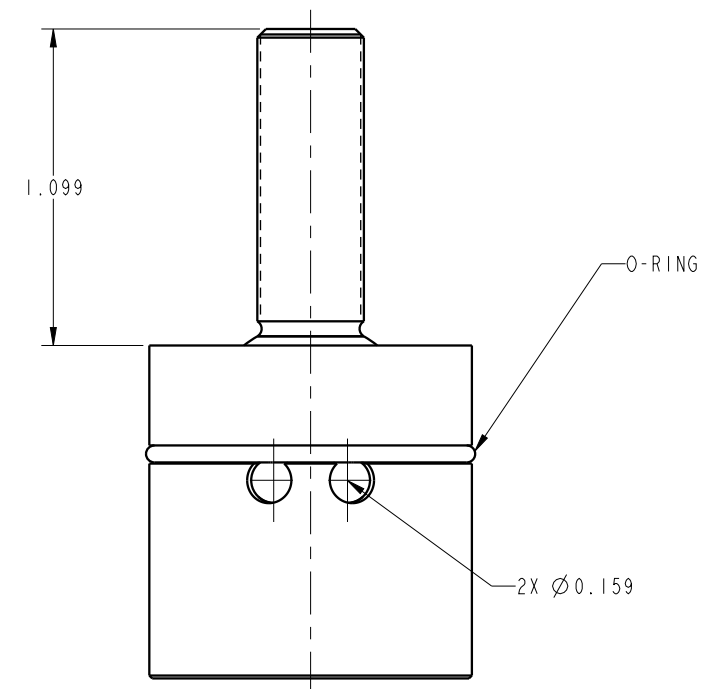
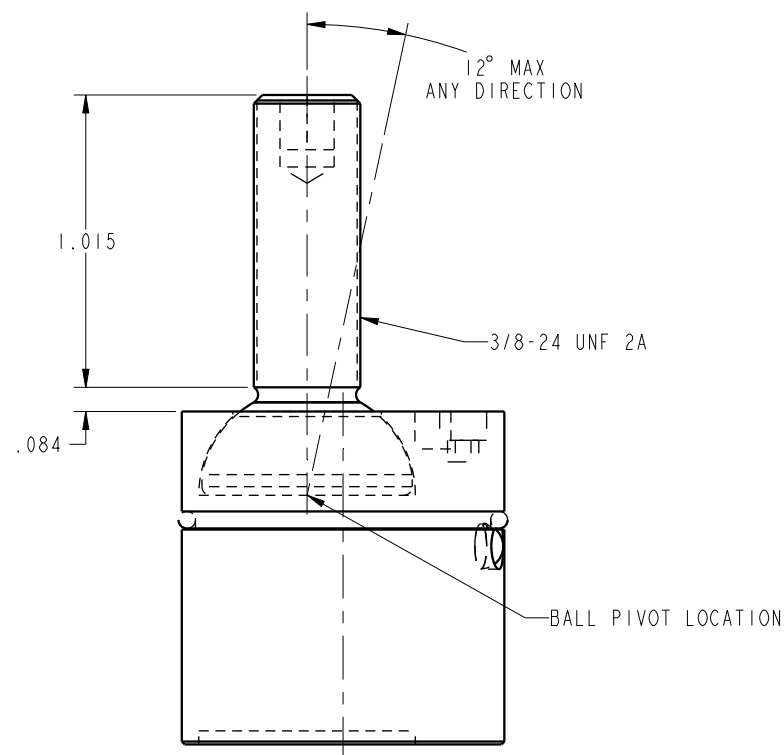


ILC66091805 REV A ECN 2960



CAD CONTROL DRAWING		VEKTEK, INC. 1334 E. SIXTH AVE. P.O. BOX 625 EMPORIA, KS. 66801 U.S.A.

A	2960	RELEASE	MAJ	1/21/16	66091805	A	ASSY, DURA PIN, 18, XXHVV
REV	IN ACCORDANCE WITH ECN	EFFECTIVE DATE	REVISED BY	DATE	REFERENCE MODEL	REF REV	*****
DRW BY: MAJ	DRAWING STATUS: Released				TOLERANCES DO NOT APPLY	SIZE	ILC66091805 REV A
DATE: 1-21-16	PRODUCTION APPROVED FOR RELEASED STATUS ONLY				DIMENSIONS ARE NOMINAL	B	

FORM FEG036, Rev. B

SHEET 1 OF 1