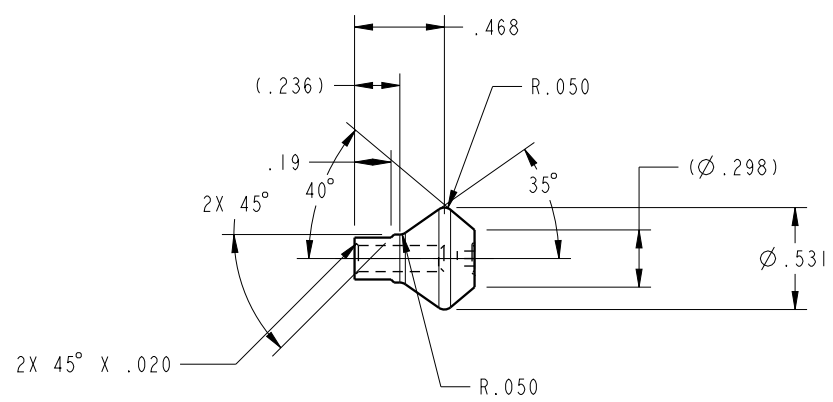
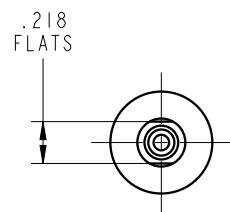



ILC66101201 REV B ECN 4413



CAD CONTROL DRAWING



VEKTEK, INC.
1334 E. SIXTH AVE. P.O. BOX 625
EMPORIA, KS. 66801 U.S.A.

B	4413	RELEASE	RLK	4/28/21	66101201	B	ASSY, HEAD, CLUB, STD, 12
REV	IN ACCORDANCE WITH ECN	EFFECTIVE DATE	REVISED BY	DATE	REFERENCE MODEL	REF REV	*****
DRW BY:	K. ROEMER	DRAWING STATUS: Released			TOLERANCES DO NOT APPLY DIMENSIONS ARE NOMINAL		SIZE B
DATE:	07/05/12	PRODUCTION APPROVED FOR RELEASED STATUS ONLY			ILC66101201		REV B

FORM FEG036, Rev. B