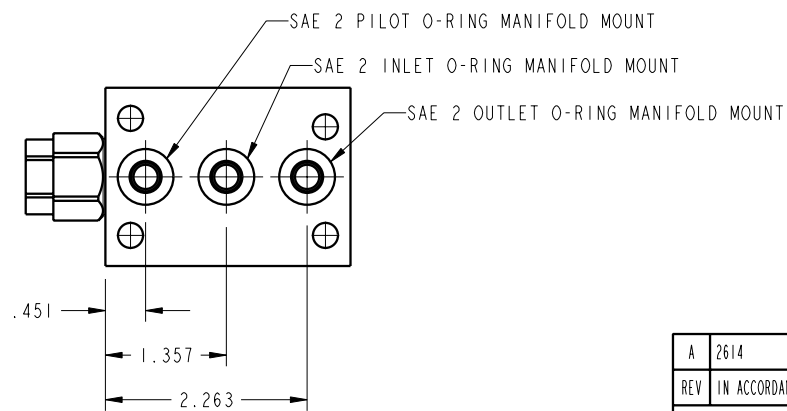
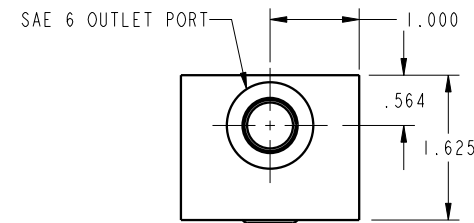
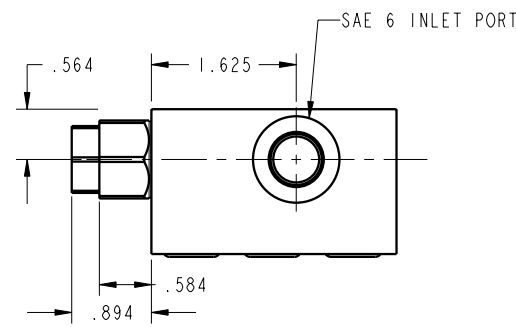
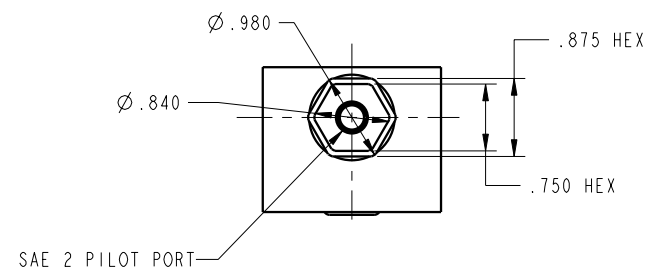


ILC70331113 REV A ECN 2614



CAD CONTROL  
DRAWING



VEKTEK, INC.  
1334 E. SIXTH AVE. P.O. BOX 625  
EMPORIA, KS. 66801 U.S.A.

A	2614	RELEASE	DKC	4/8/14	70331113	A	MANIFOLD, PO CHECK, CM, SAE
REV	IN ACCORDANCE WITH ECN	EFFECTIVE DATE	REVISED BY	DATE	REFERENCE MODEL	REF REV	*****
DRW BY:	DKC	DRAWING STATUS: <b>Released</b>			TOLERANCES DO NOT APPLY	SIZE	ILC70331113 REV A
DATE:	11/11/13	PRODUCTION APPROVED FOR RELEASED STATUS ONLY			DIMENSIONS ARE NOMINAL	D	FORM FEG036, Rev. B

SHEET 1 OF 1