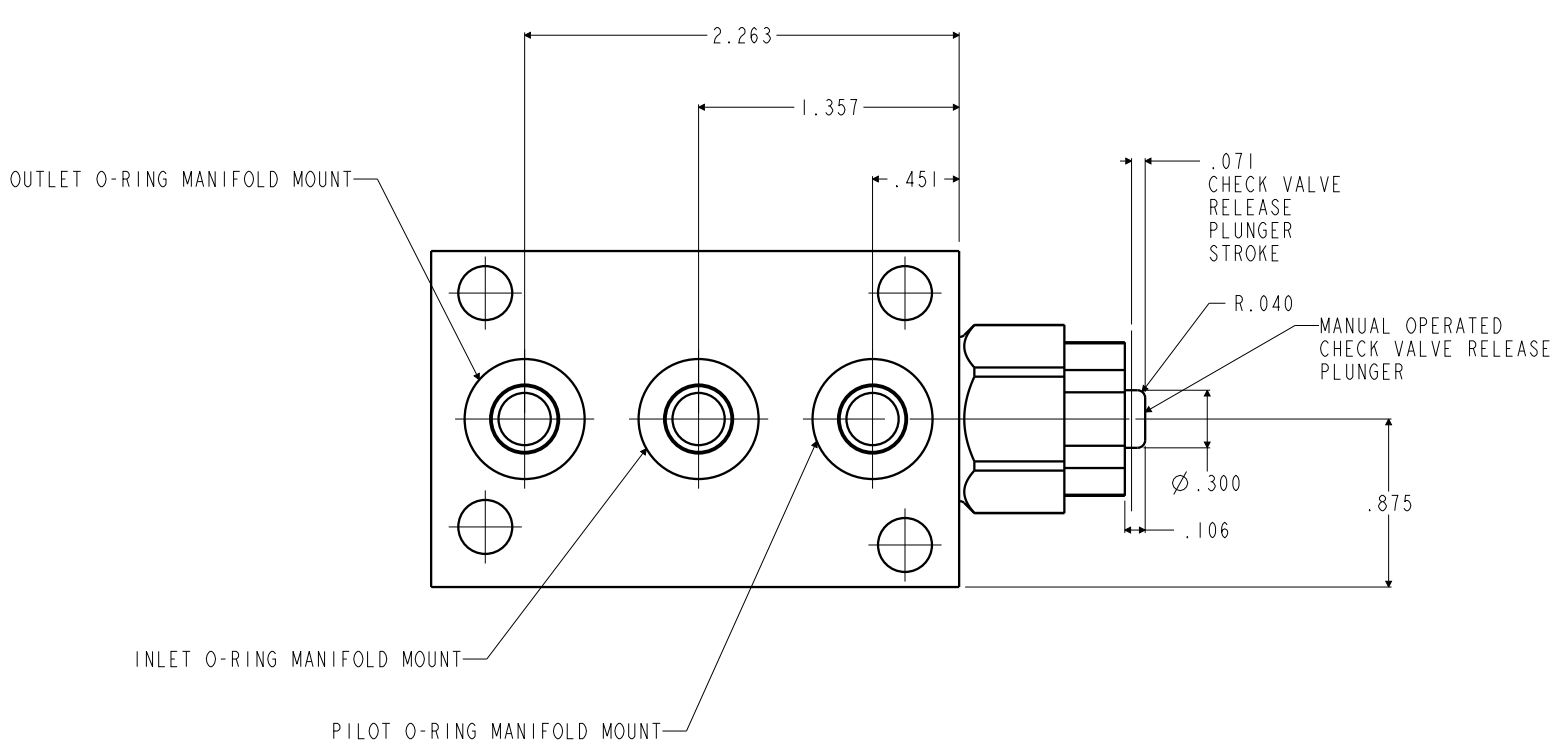
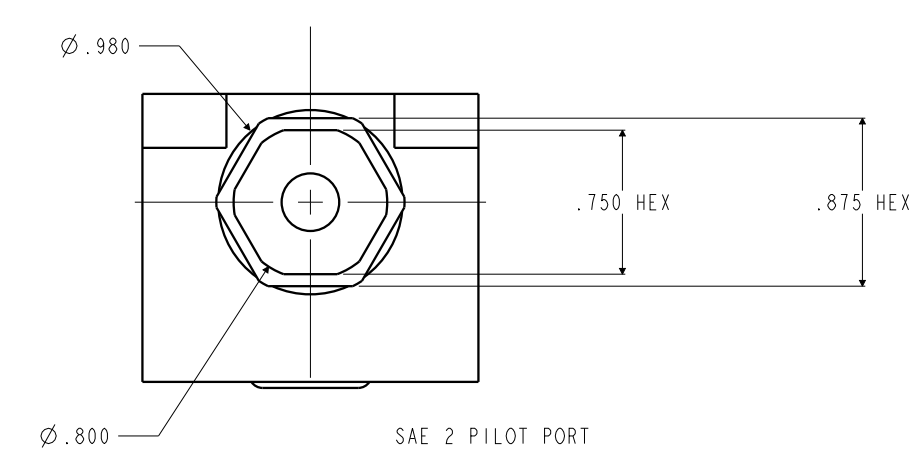
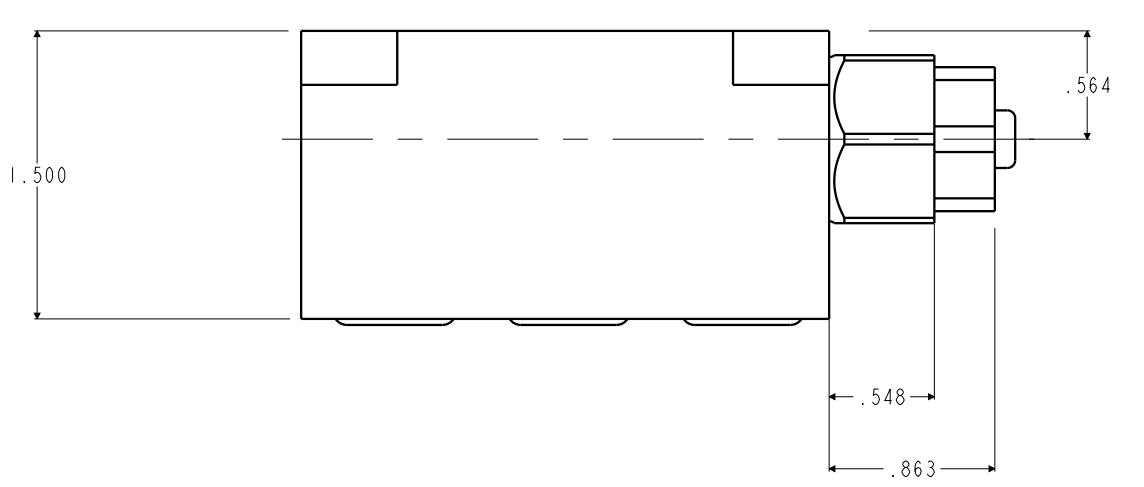
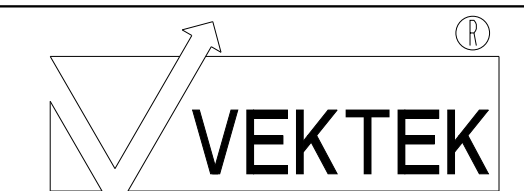


ILC70331772 REV A ECN 5635



WEIGHT 1.94 LBS

CAD CONTROL DRAWING



VEKTEK, INC.  
1334 E. SIXTH AVE. P.O. BOX 625  
EMPORIA, KS. 66801 U.S.A.

A	5635	RELEASE	JDW	03/21/25	70331772	A	MANIFOLD, PO CHECK, CM, MM, MANUAL
REV	IN ACCORDANCE WITH ECN	EFFECTIVE DATE	REVISED BY	DATE	REFERENCE MODEL	REF REV	
DRW BY:	JDW	DRAWING STATUS: Released			TOLERANCES DO NOT APPLY		SIZE D
DATE:	03/21/25	PRODUCTION APPROVED FOR RELEASED STATUS ONLY			DIMENSIONS ARE NOMINAL		ILC70331772 REV A