

1

2

3

4

D

D

C

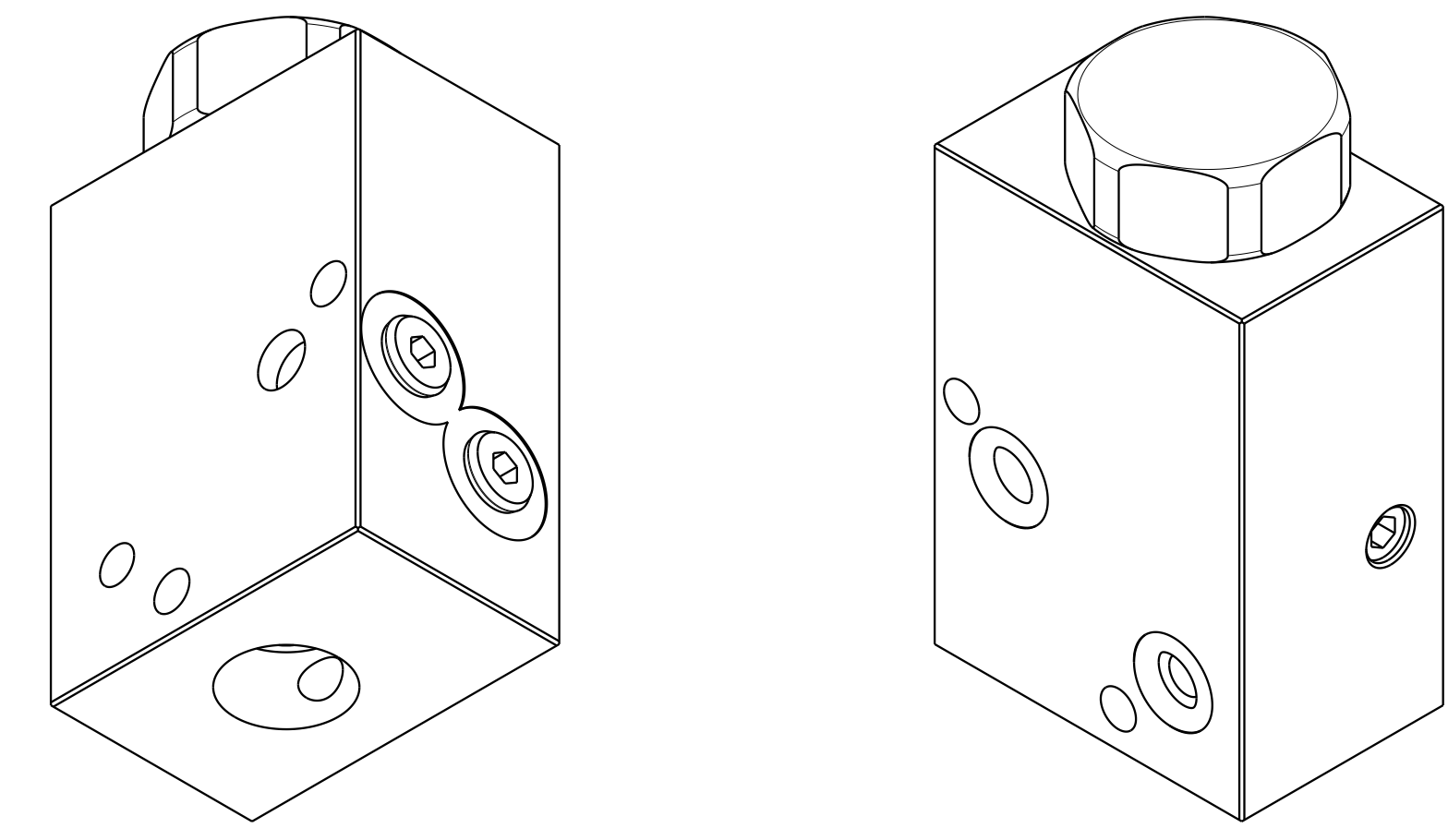
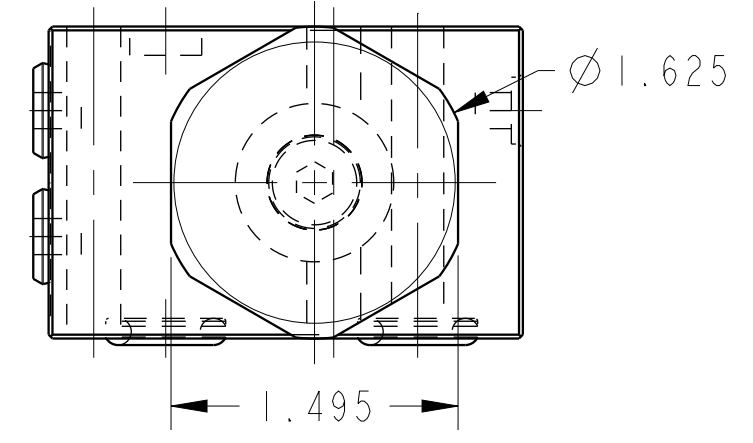
C

B

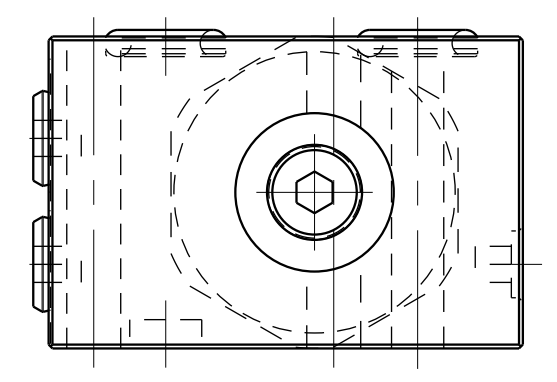
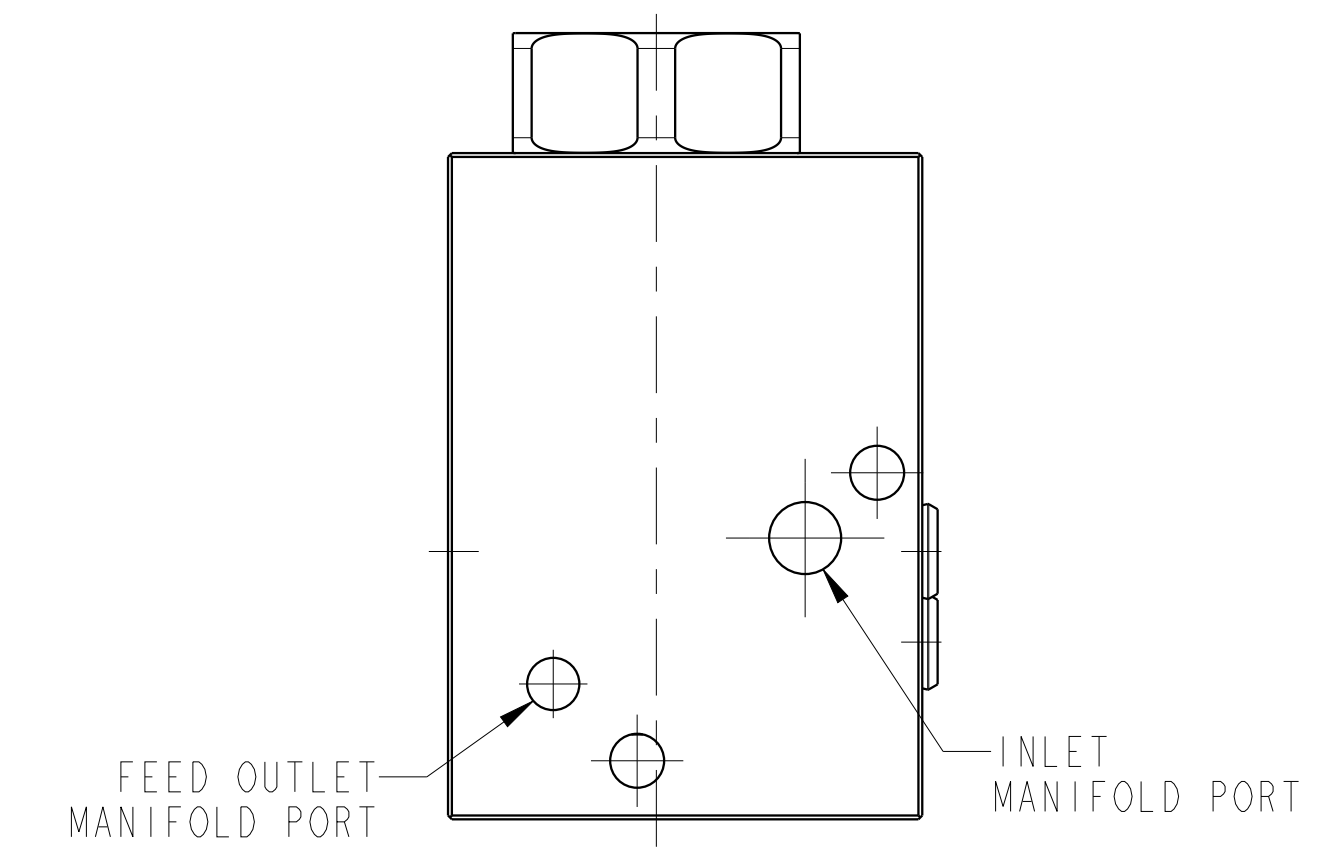
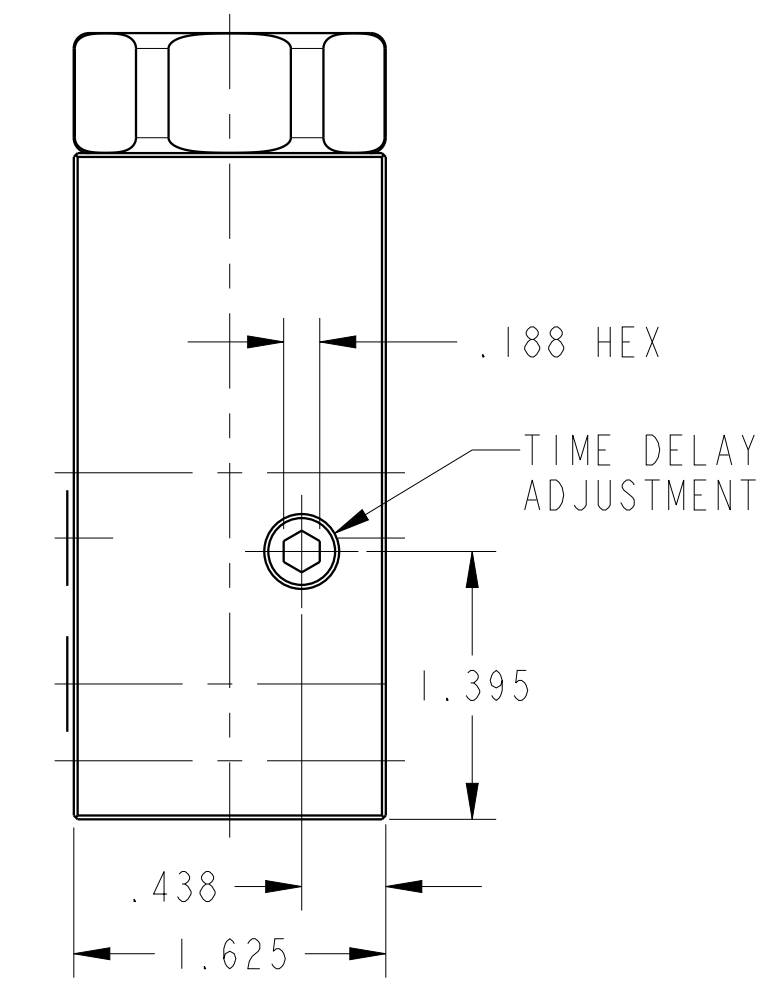
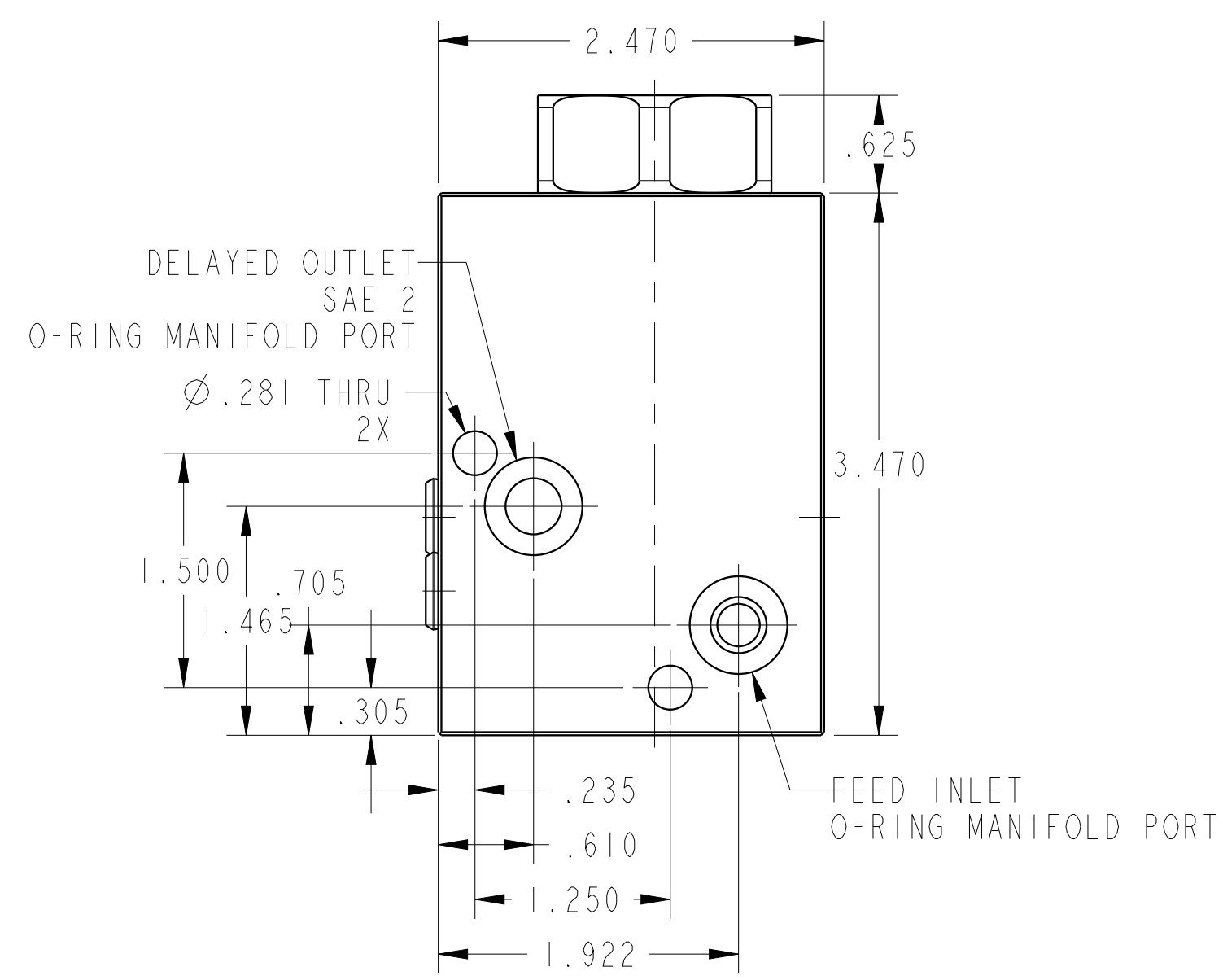
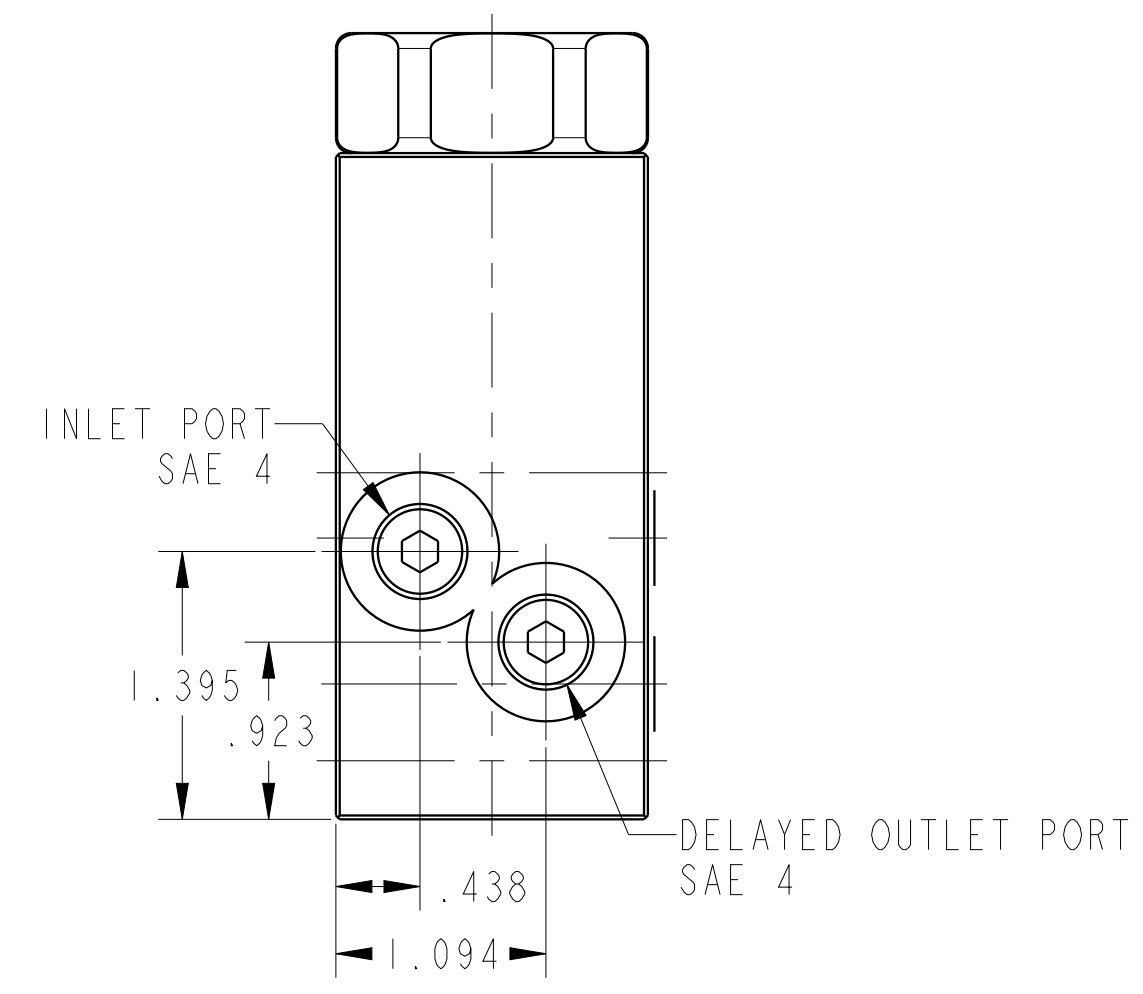
B

A

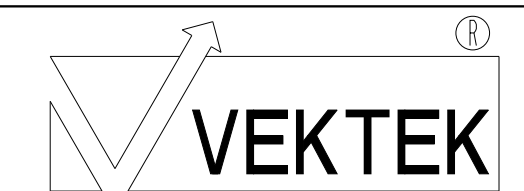
A



ILC70431000 REV A ECN 2829



CAD CONTROL DRAWING



VEKTEK, INC.
1334 E. SIXTH AVE. P.O. BOX 625
EMPORIA, KS. 66801 U.S.A.

A	2829	RELEASE	ALUTHI	3-26-15	70-4310-00	A	VALVE, UNCLAMP DELAY
REV	IN ACCORDANCE WITH ECN	EFFECTIVE DATE	REVISED BY	DATE	REFERENCE MODEL	REF REV	*****
DRW BY:	ALUTHI	DRAWING STATUS: Released			TOLERANCES DO NOT APPLY		SIZE
DATE:	3-26-15	PRODUCTION APPROVED FOR RELEASED STATUS ONLY			DIMENSIONS ARE NOMINAL		D
					ILC70431000		REV A
							FORM FEG036, Rev. B