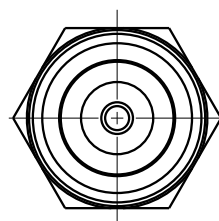


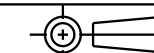
ILC70443002 REV B ECN 2887



CAD CONTROL  
DRAWING



VEKTEK, INC.  
1334 E. SIXTH AVE. P.O. BOX 625  
EMPORIA, KS. 66801 U.S.A.



B	2887	RELEASE	JDW	07/16/15	70443002	0	VALVE, SEQUENCE, CM
REV	IN ACCORDANCE WITH ECN	EFFECTIVE DATE	REVISED BY	DATE	REFERENCE MODEL	REF REV	
DRW BY:	K. ROEMER	DRAWING STATUS: <b>Released</b>			TOLERANCES DO NOT APPLY DIMENSIONS ARE NOMINAL		SIZE B
DATE:	11-22-02	PRODUCTION APPROVED FOR RELEASED STATUS ONLY			ILC70443002		REV B

FORM FEG036, Rev. B

SHEET 1 OF 1