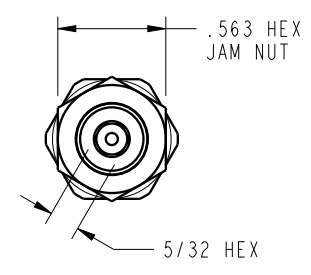
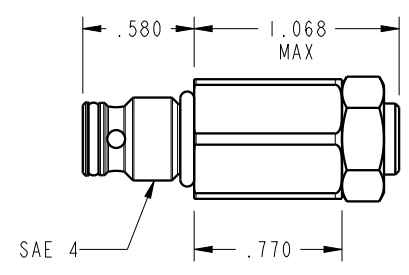
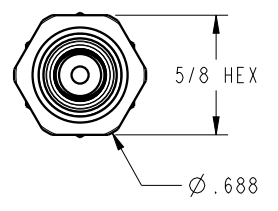




ILC70443711 REV A ECN 3559



CAD CONTROL DRAWING				 VEKTEK, INC. 1334 E. SIXTH AVE. P.O. BOX 625 EMPORIA, KS. 66801 U.S.A.	
					
A	3559	RELEASE	ATHOMSEN	22-AUG-2018	70443711
REV	IN ACCORDANCE WITH ECN	EFFECTIVE DATE	REVISED BY	DATE	REFERENCE MODEL
REV	DATE: 22-AUG-2018	DRAWING STATUS: Released PRODUCTION APPROVED FOR RELEASED STATUS ONLY			REF REV *****
TOLERANCES DO NOT APPLY DIMENSIONS ARE NOMINAL				SIZE B	ILC70443711 REV A FORM FEG036, Rev. B