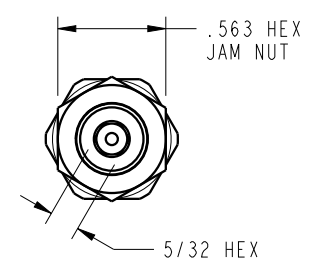
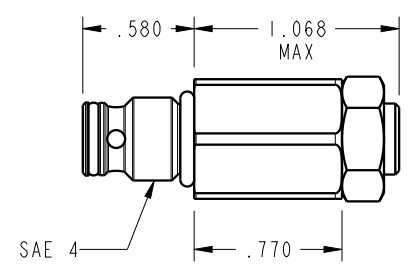
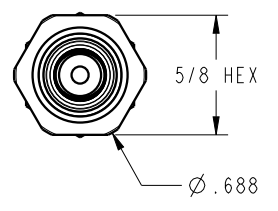

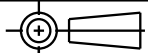


ILC70443712 REV B ECN 4606



CAD CONTROL DRAWING				 VEKTEK, INC. 1334 E. SIXTH AVE. P.O. BOX 625 EMPORIA, KS. 66801 U.S.A.		
						
B	4606	RELEASE	NPETERS	8/18/25	70443712 D	
REV	IN ACCORDANCE WITH ECN	EFFECTIVE DATE	REVISED BY	DATE	REFERENCE MODEL REF REV	
DRW BY:	ATHOMSEN	DRAWING STATUS: Released			TOLERANCES DO NOT APPLY	SIZE B
DATE:	22-AUG-2018	PRODUCTION APPROVED FOR RELEASED STATUS ONLY			DIMENSIONS ARE NOMINAL	ILC70443712 REV B
					FORM FEG036, Rev. B	