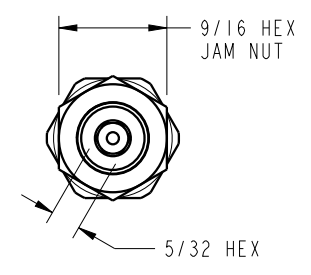
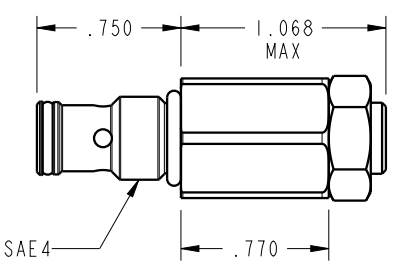
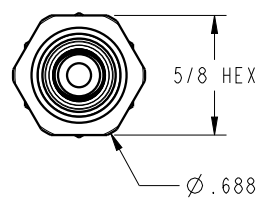

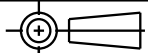


ILC70443721 REV A ECN 3559



CAD CONTROL DRAWING				 VEKTEK, INC. 1334 E. SIXTH AVE. P.O. BOX 625 EMPORIA, KS. 66801 U.S.A.	
					
A	3559	RELEASE	ATHOMSEN	22-AUG-2018	70443721
REV	IN ACCORDANCE WITH ECN	EFFECTIVE DATE	REVISED BY	DATE	REFERENCE MODEL
REF REV					A
DRW BY: ATHOMSEN	DRAWING STATUS: Released				ASSY, IP-SEQ, SAE, .750, 1500 PSI
DATE: 22-AUG-2018	PRODUCTION APPROVED FOR RELEASED STATUS ONLY				REF REV
TOLERANCES DO NOT APPLY DIMENSIONS ARE NOMINAL				SIZE B	ILC70443721
				REV A	FORM FEG036, Rev. B