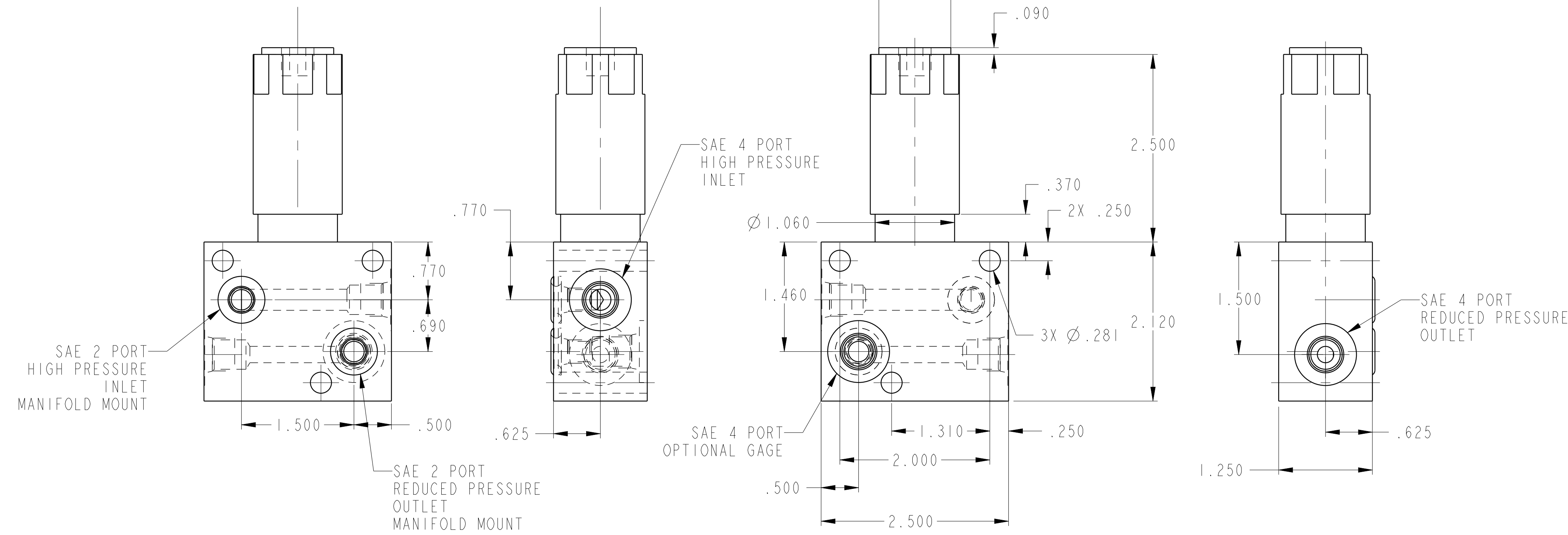
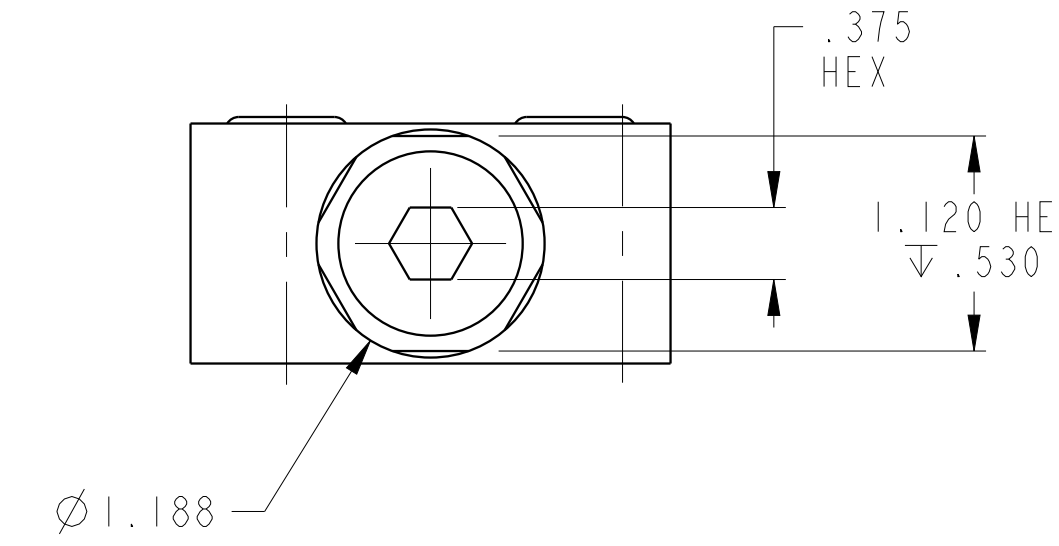
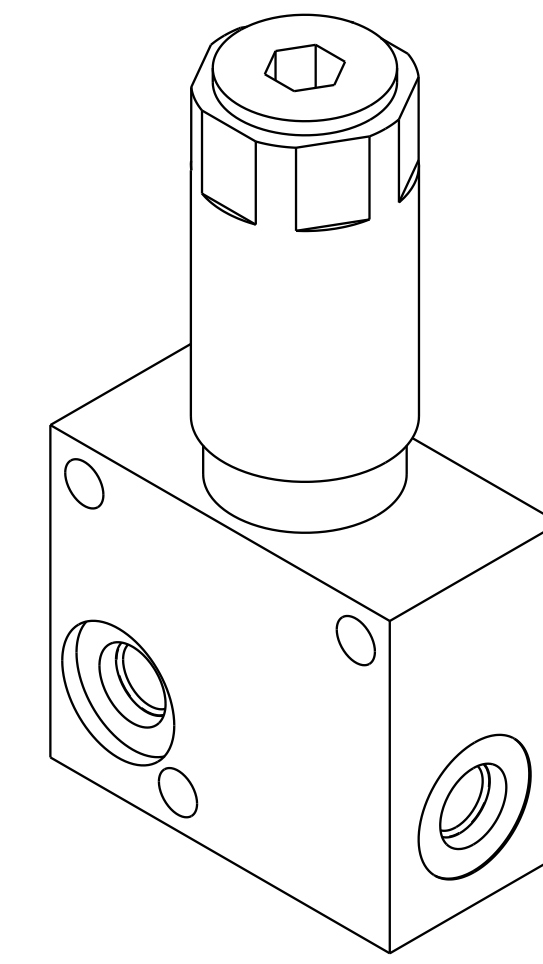


1

2

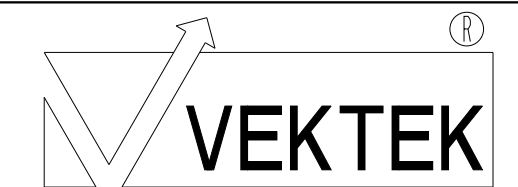
3

4

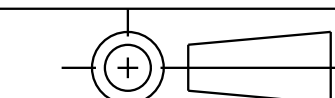


ILC70540007 REV D ECN 5611

CAD CONTROL DRAWING



VEKTEK, INC.
 1334 E. SIXTH AVE. P.O. BOX 625
 EMPORIA, KS. 66801 U.S.A.



D	5611	RELEASE	ALS	1/20/25
REV	IN ACCORDANCE WITH ECN	EFFECTIVE DATE	REVISED BY	DATE
DRW BY:	DRAWING STATUS: Released			
DATE:	PRODUCTION APPROVED FOR RELEASED STATUS ONLY			

70540007	M
REFERENCE MODEL	REF REV
TOLERANCES DO NOT APPLY DIMENSIONS ARE NOMINAL	

PLV, MANIFOLD, 1500 PSI
SIZE D
ILC70540007
REV D