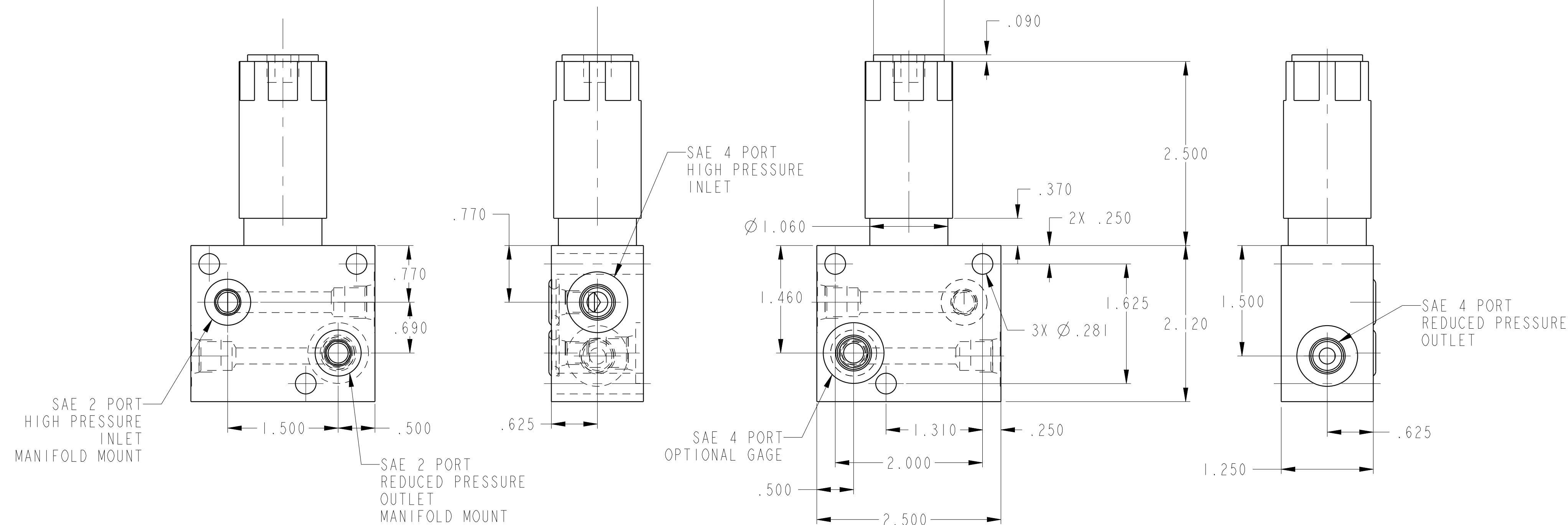
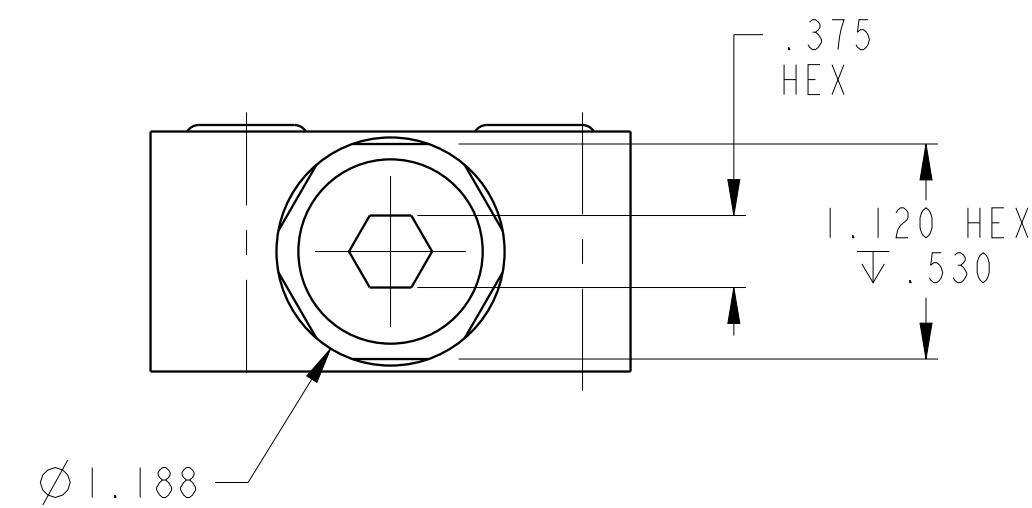
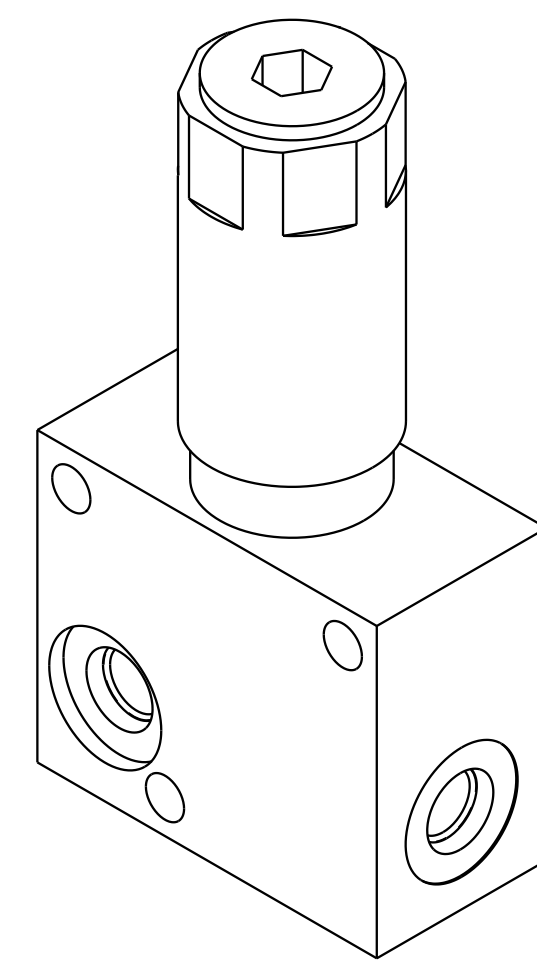


1

2

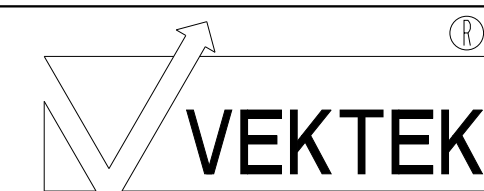
3

4

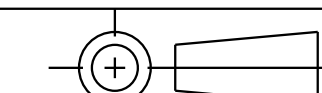


ILC70540008 REV D ECN 5611

CAD CONTROL DRAWING



VEKTEK, INC.  
 1334 E. SIXTH AVE. P.O. BOX 625  
 EMPORIA, KS. 66801 U.S.A.



D	5611	RELEASE	ALS	1/20/25
REV	IN ACCORDANCE WITH ECN	EFFECTIVE DATE	REVISED BY	DATE
DRW BY:	DRAWING STATUS: <b>Released</b>			
DATE:	PRODUCTION APPROVED FOR RELEASED STATUS ONLY			

70540008	M
REFERENCE MODEL	REF REV
TOLERANCES DO NOT APPLY DIMENSIONS ARE NOMINAL	

PLV, MANIFOLD, 1000 PSI
SIZE D ILC70540008 REV D