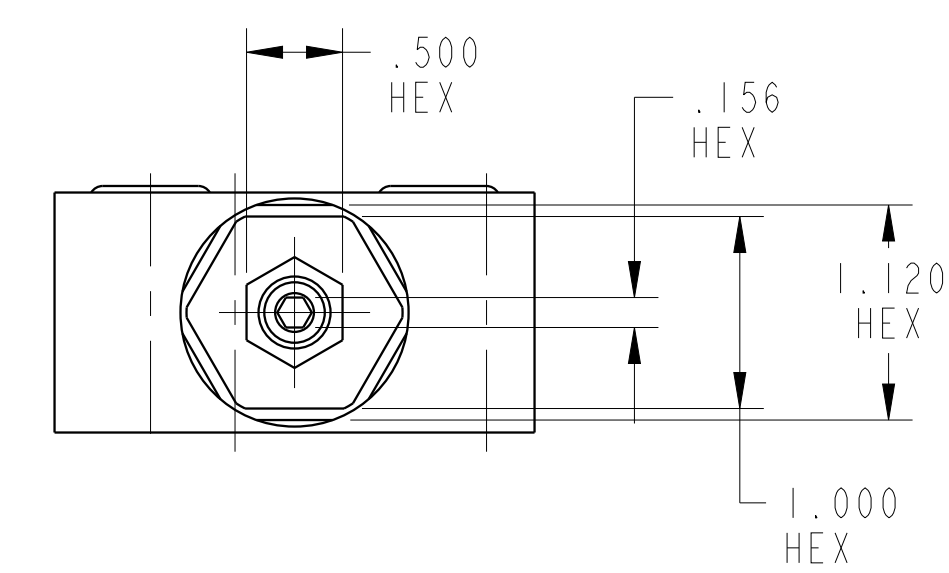
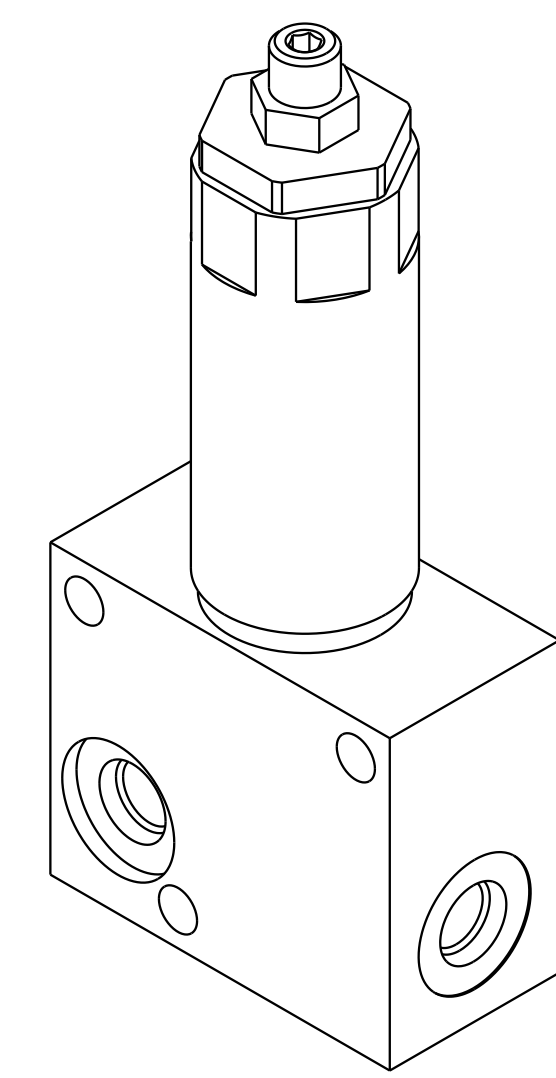


1

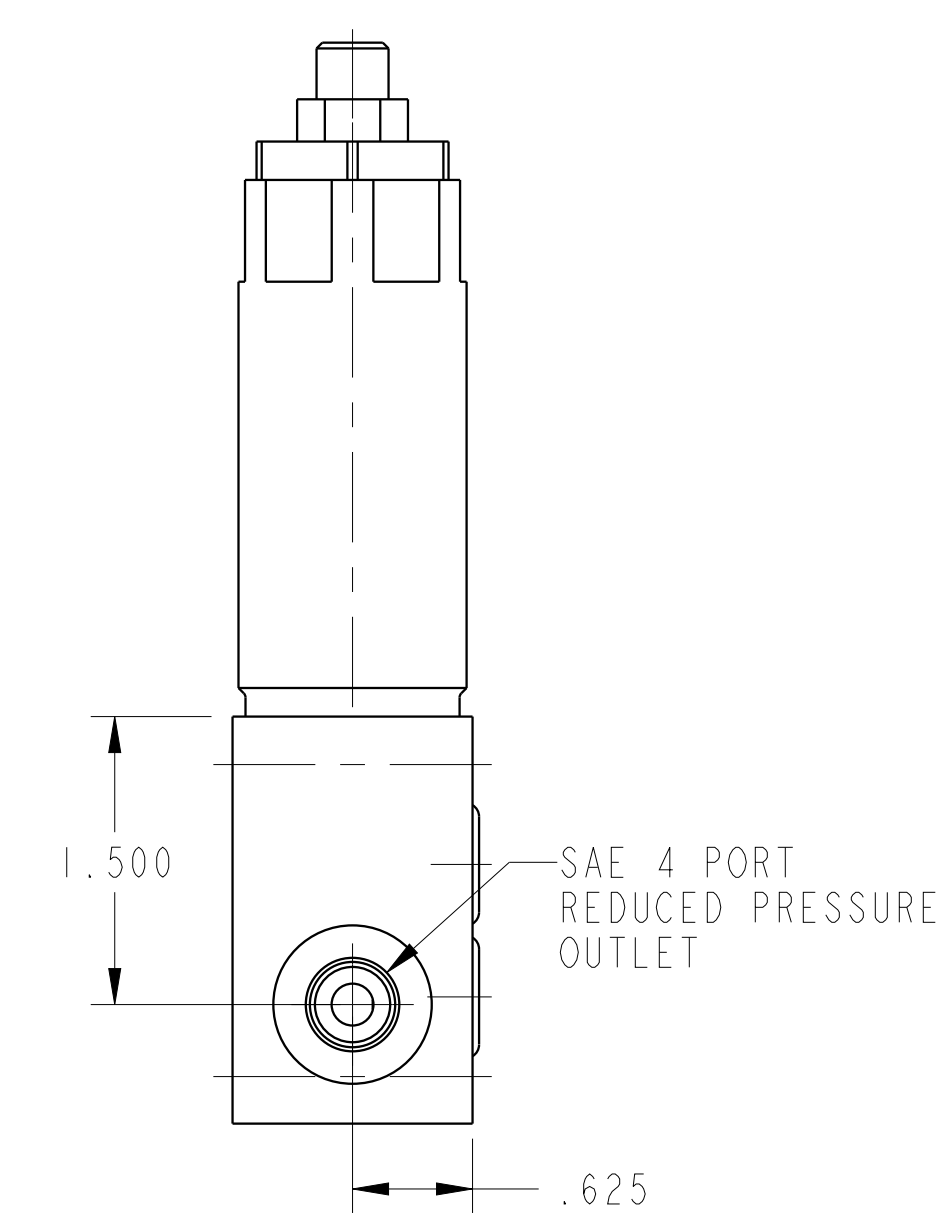
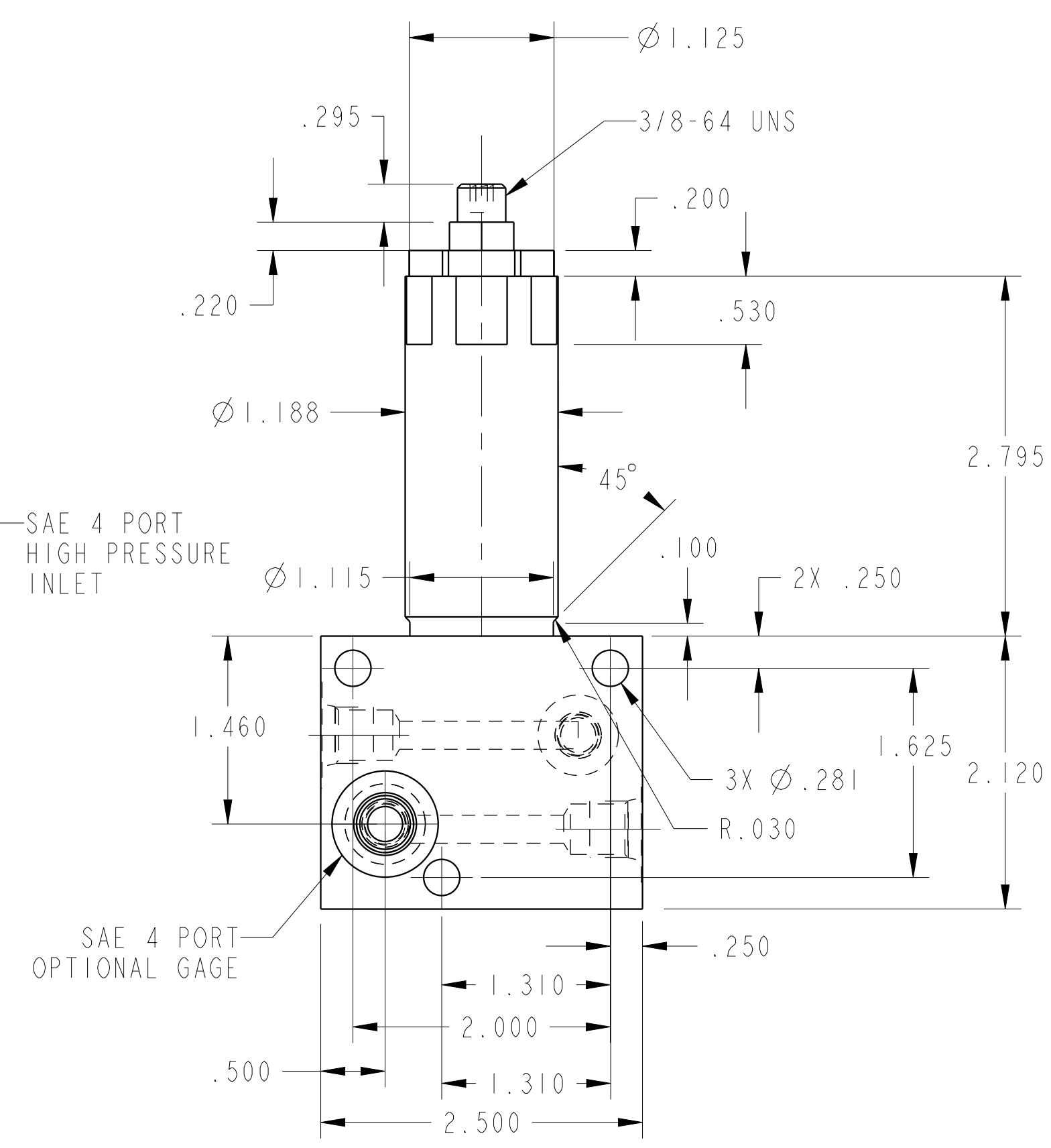
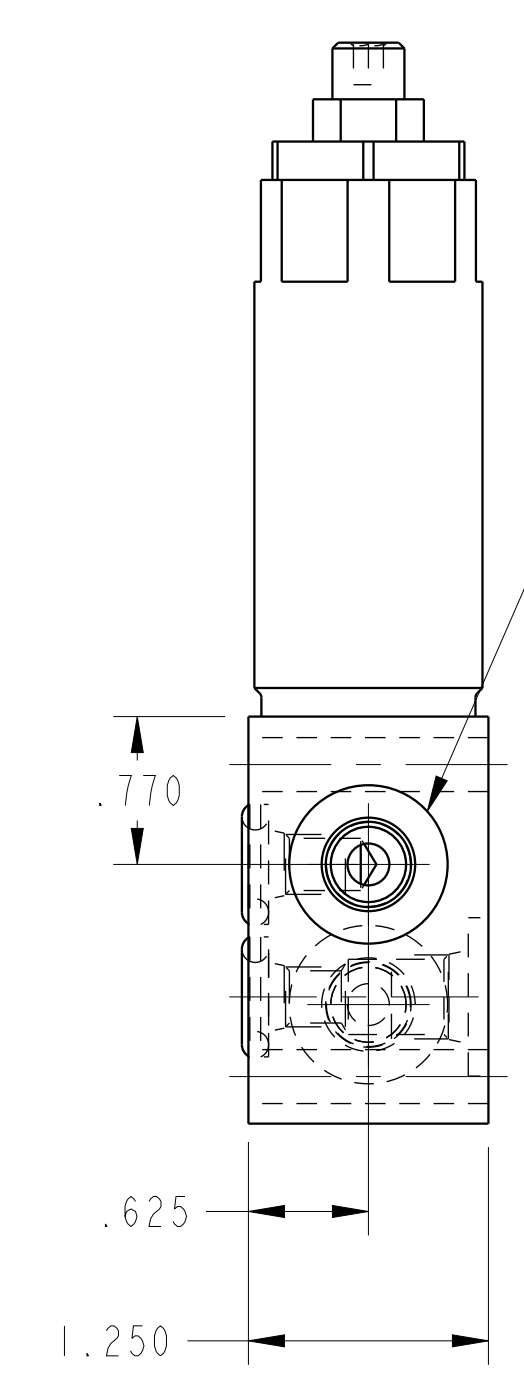
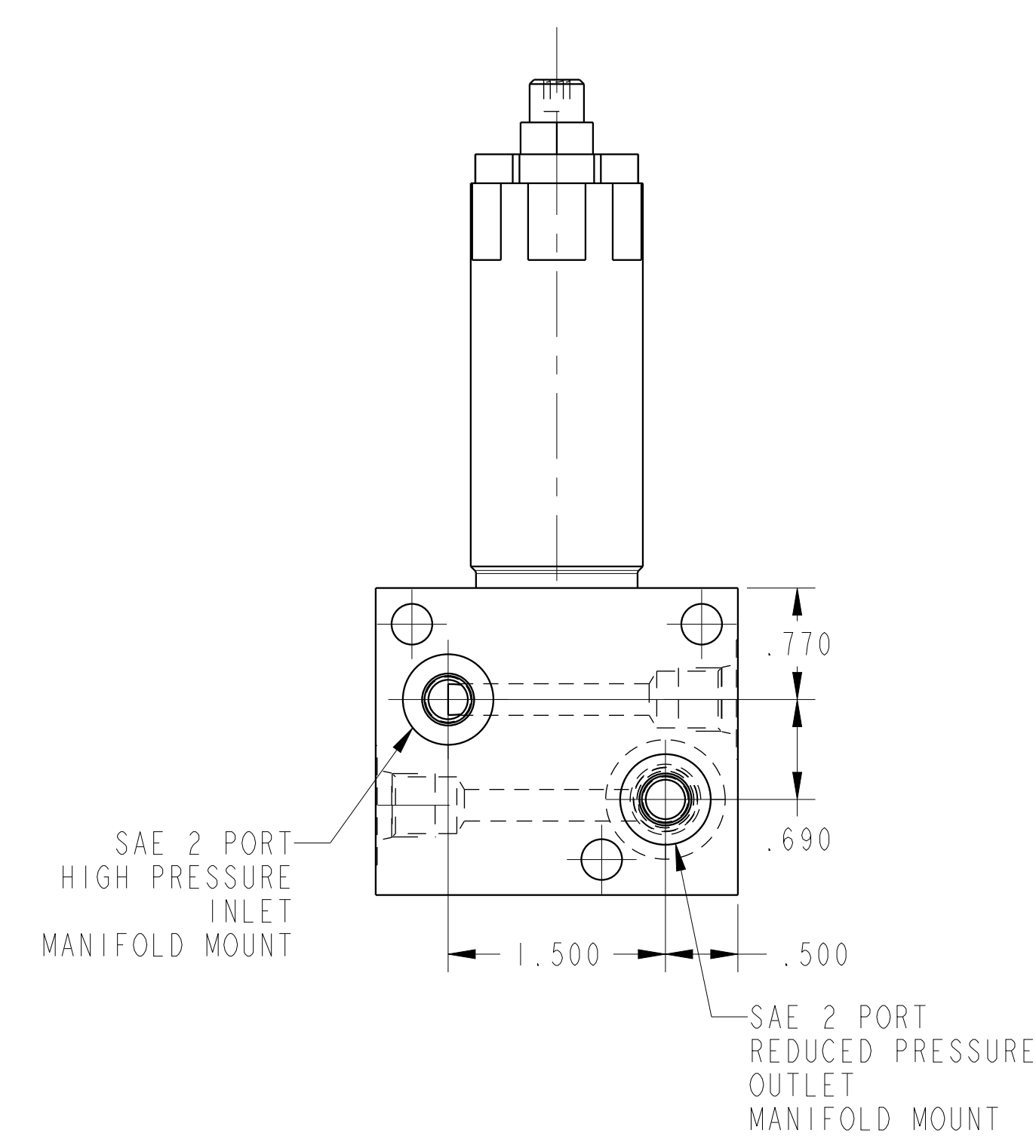
2

3

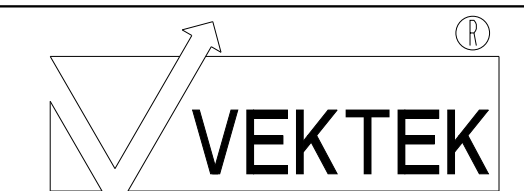
4



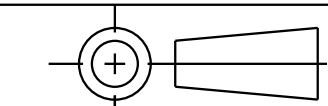
ILC70541010 REV F ECN 4534



CAD CONTROL DRAWING



VEKTEK, INC.  
1334 E. SIXTH AVE. P.O. BOX 625  
EMPORIA, KS. 66801 U.S.A.



F	4534	RELEASE	ALS	10/5/21	70541010	H	PRV, MANIFOLD
REV	IN ACCORDANCE WITH ECN	EFFECTIVE DATE	REVISED BY	DATE	REFERENCE MODEL	REF REV	
DRW BY:	K. ROEMER	DRAWING STATUS: Released			TOLERANCES DO NOT APPLY		SIZE D
DATE:	11-25-02	PRODUCTION APPROVED FOR RELEASED STATUS ONLY			DIMENSIONS ARE NOMINAL		ILC70541010 REV F