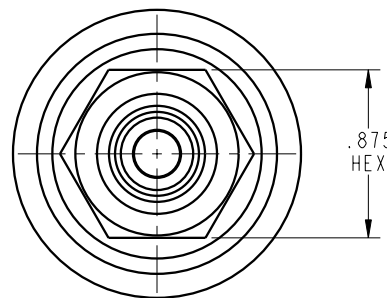


ILC70750074 REV A ECN 2295

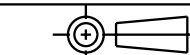


CAD CONTROL
DRAWING



VEKTEK, INC.
1334 E. SIXTH AVE. P.O. BOX 625
EMPORIA, KS. 66801 U.S.A.

A	2295	RELEASE	DKC	7-21-11	70750074	A	SWITCH, PRESS, M8 MALE
REV	IN ACCORDANCE WITH ECN	EFFECTIVE DATE	REVISED BY	DATE	REFERENCE MODEL	REF REV	''''
DRW BY:	DKC	DRAWING STATUS: Released			TOLERANCES DO NOT APPLY DIMENSIONS ARE NOMINAL		SIZE B
DATE:	7-13-11	PRODUCTION APPROVED FOR RELEASED STATUS ONLY					ILC70750074 REV A



FORM FEG036, Rev. A

SHEET 1 OF 1