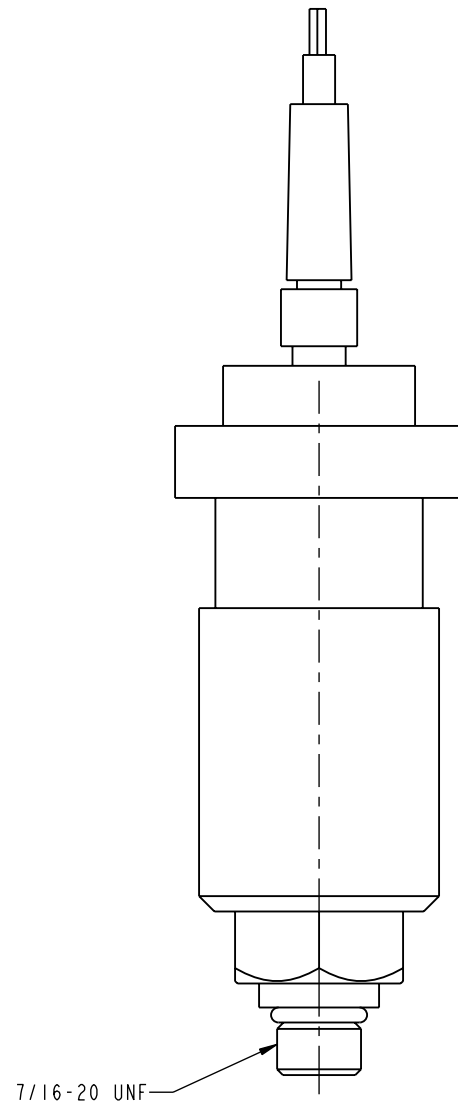
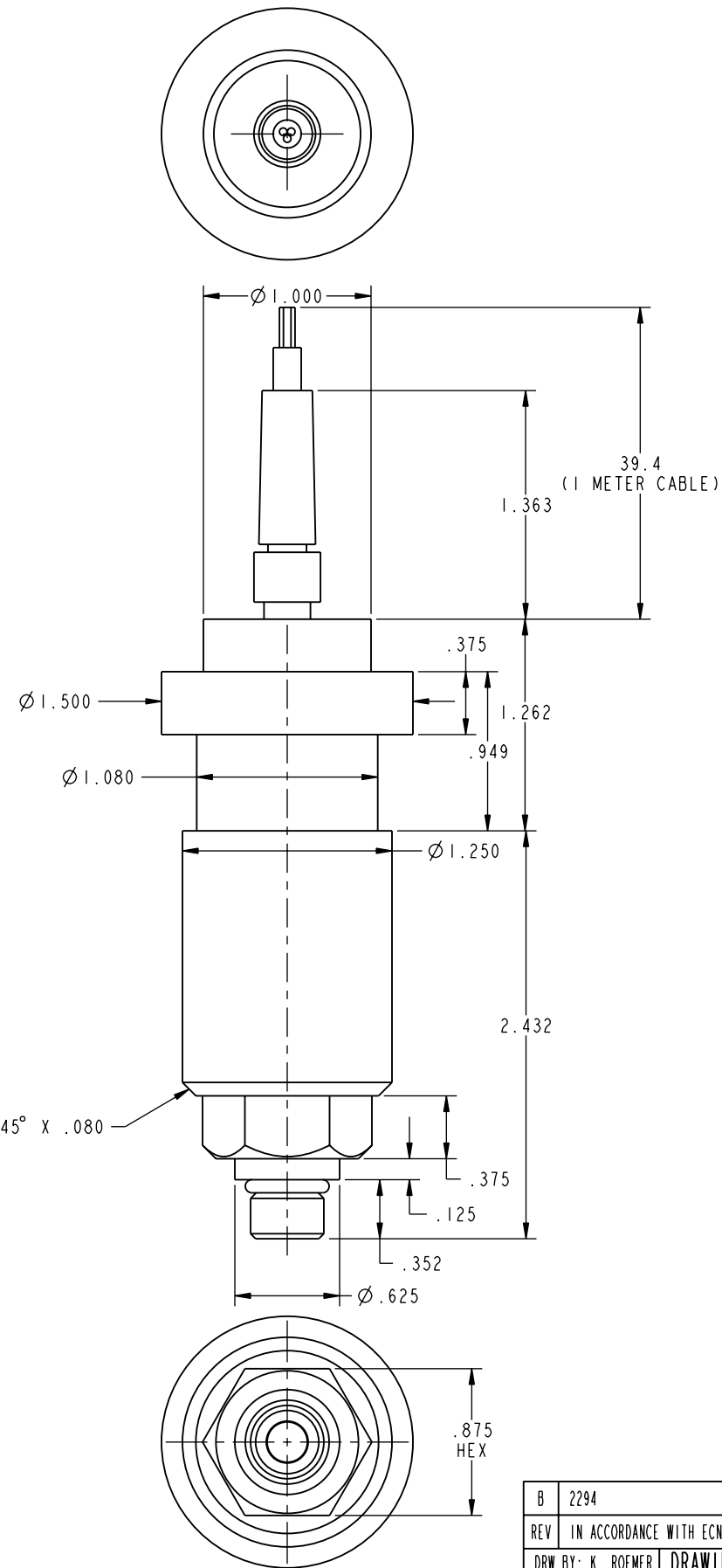


ILC70750075 REV B ECN 2294



CAD CONTROL DRAWING



VEKTEK, INC.
1334 E. SIXTH AVE. P.O. BOX 625
EMPORIA, KS. 66801 U.S.A.

B	2294	RELEASE	DKC	6-24-11	70750075	M	SWITCH, PRESS, IM CABLE
REV	IN ACCORDANCE WITH ECN	EFFECTIVE DATE	REVISED BY	DATE	REFERENCE MODEL	REF REV	''''
DRW BY:	K. ROEMER	DRAWING STATUS: Released			TOLERANCES DO NOT APPLY DIMENSIONS ARE NOMINAL		SIZE B
DATE:	11-27-02	PRODUCTION APPROVED FOR RELEASED STATUS ONLY					ILC70750075 REV B

70750075	M	SWITCH, PRESS, IM CABLE
REFERENCE MODEL	REF REV	''''
TOLERANCES DO NOT APPLY DIMENSIONS ARE NOMINAL		SIZE B
		ILC70750075 REV B

70750075	M	SWITCH, PRESS, IM CABLE
REFERENCE MODEL	REF REV	''''
TOLERANCES DO NOT APPLY DIMENSIONS ARE NOMINAL		SIZE B
		ILC70750075 REV B

FORM FEG036, Rev. A

SHEET 1 OF 1