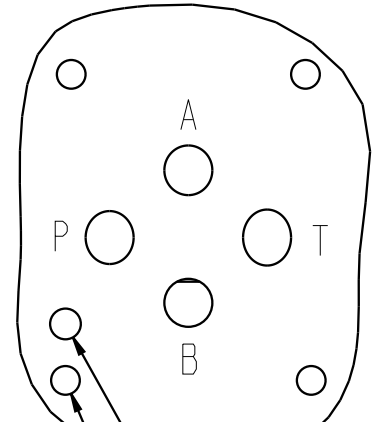
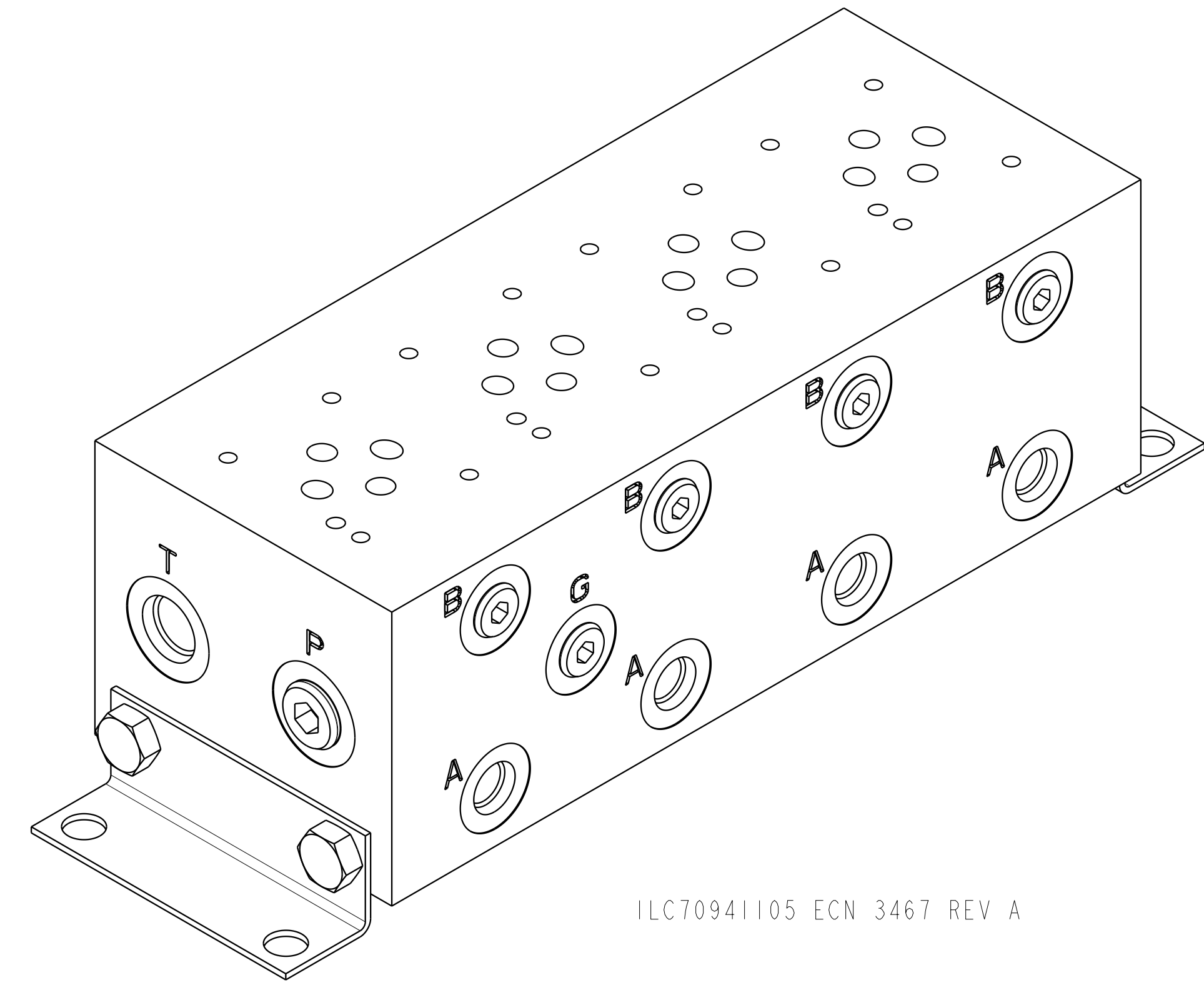
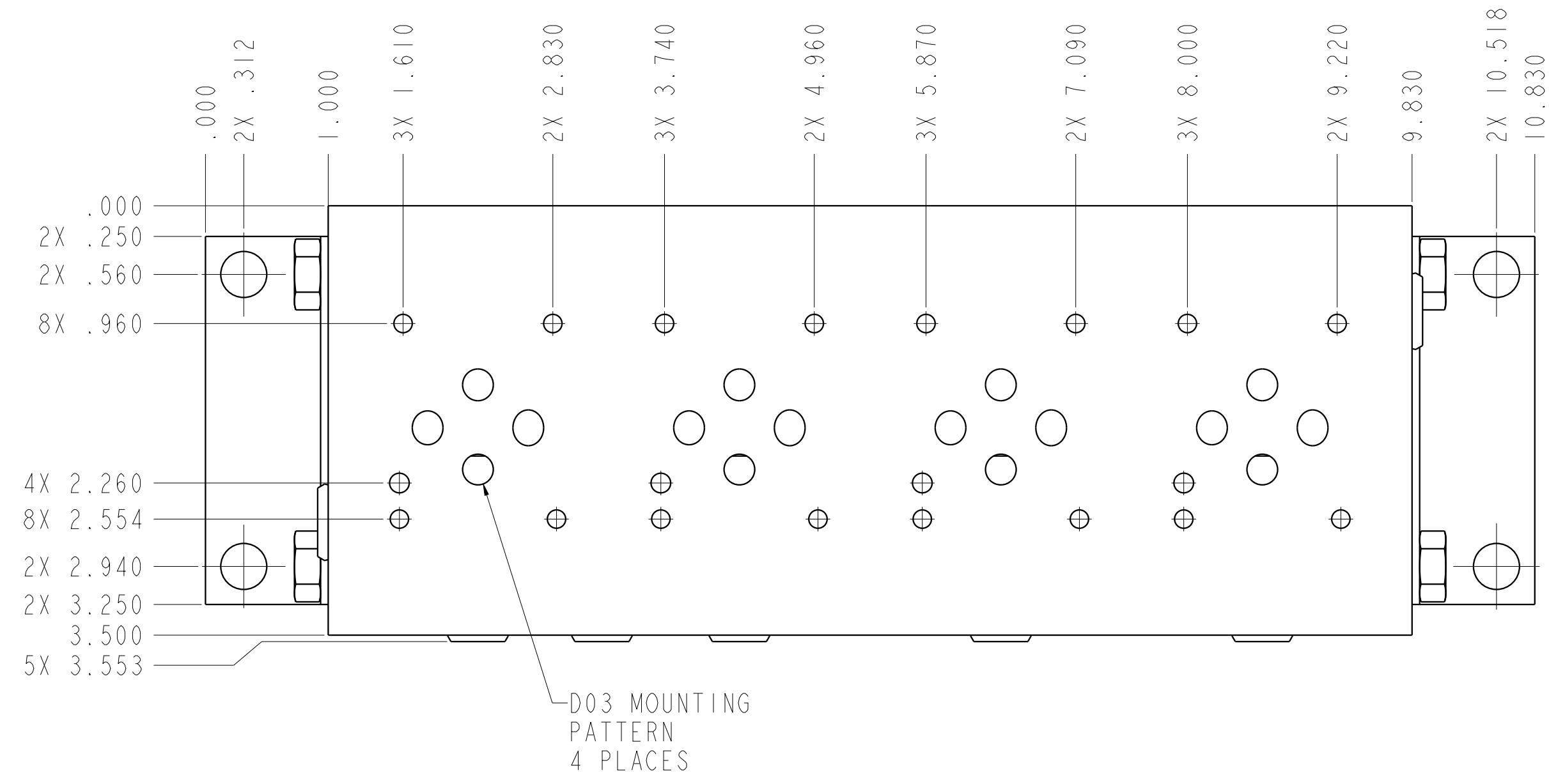


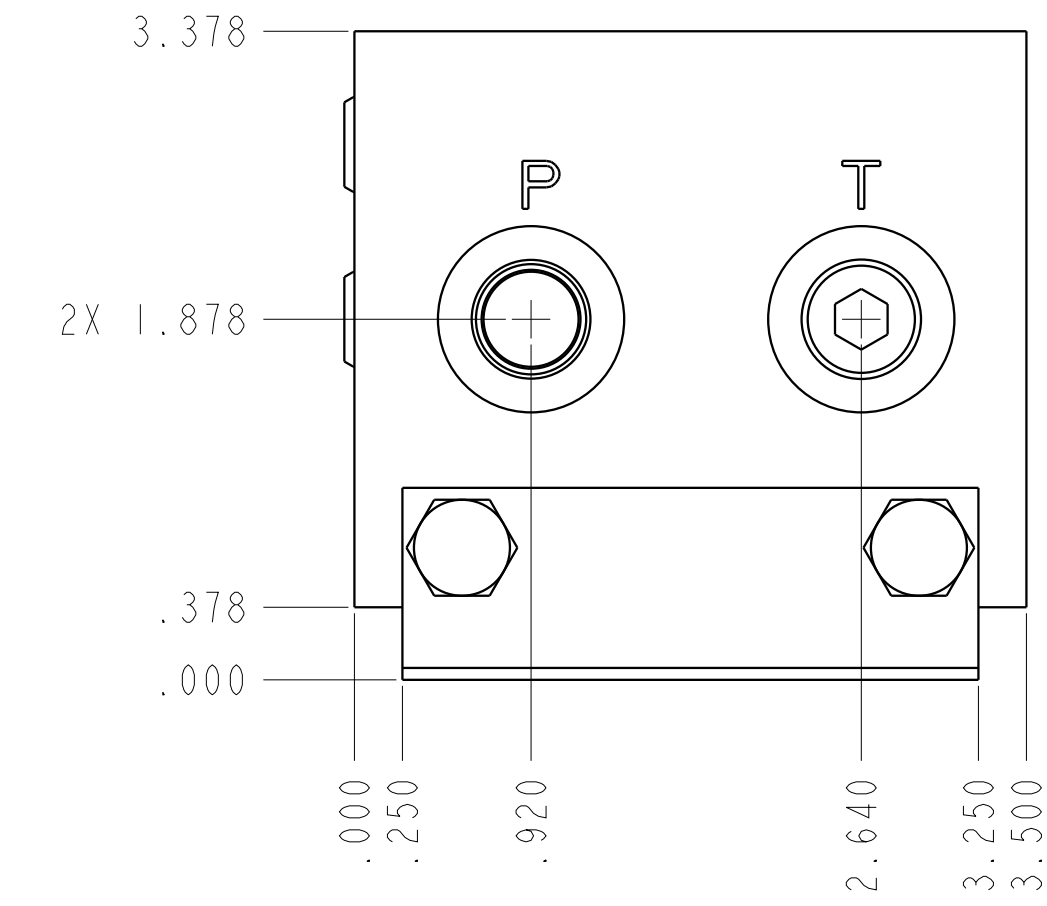
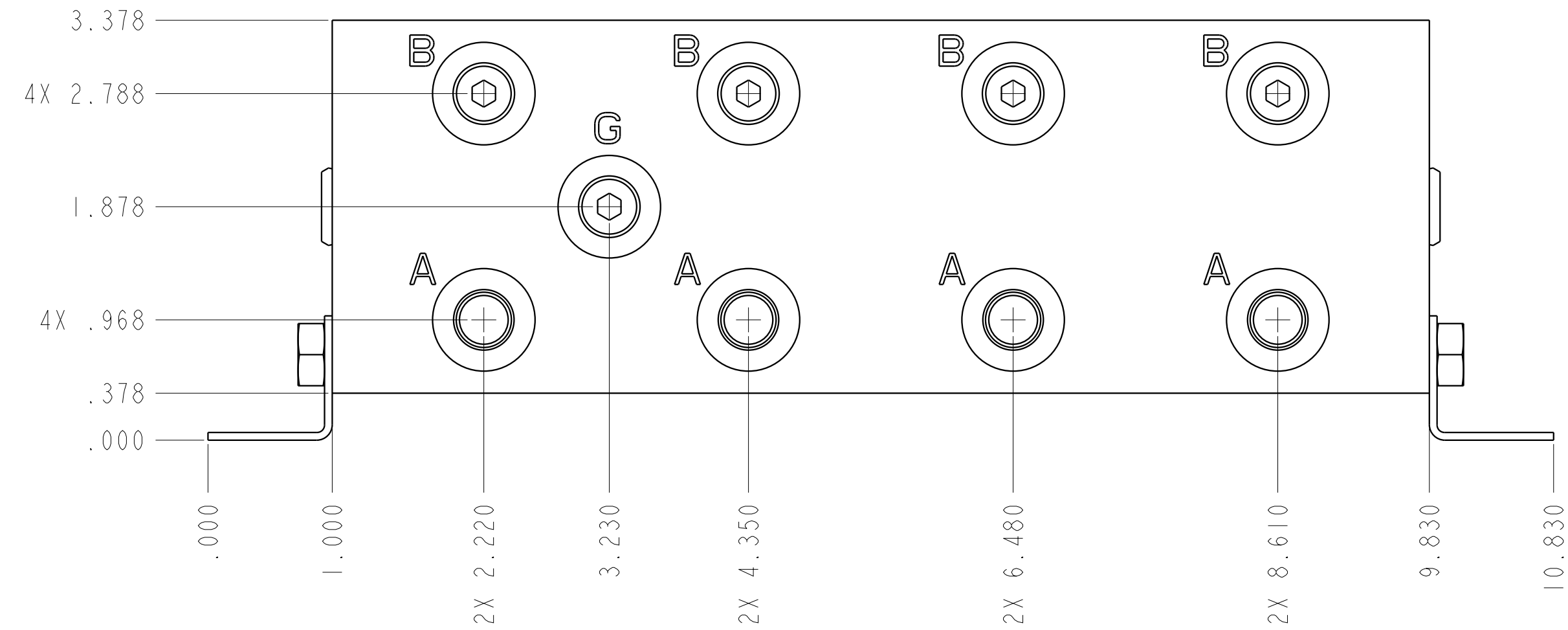
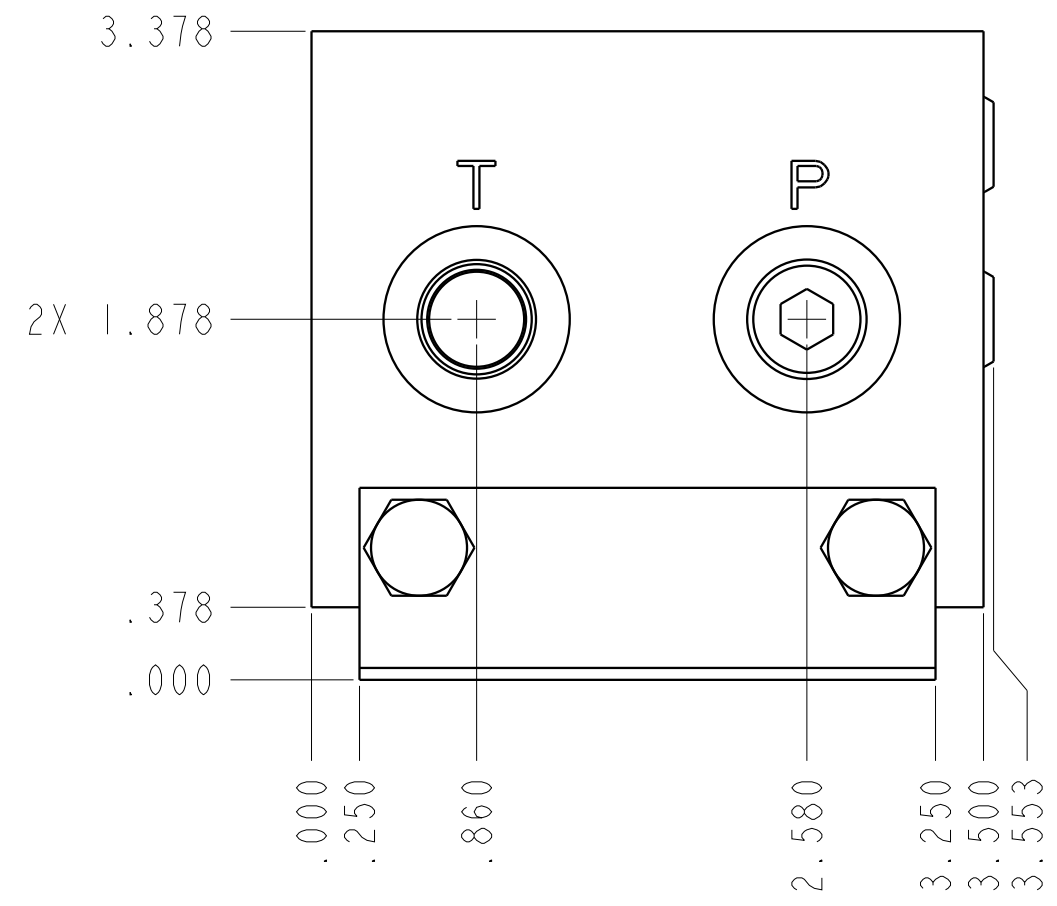
D03 PATTERN



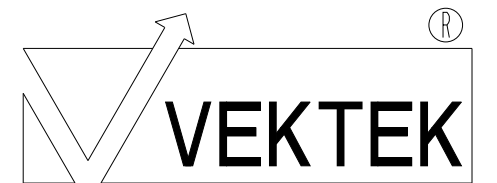
Ø.160  $\nabla$ .16  
LOCATING PIN HOLE  
4X Ø.150  $\nabla$ .606  
10-24 UNC-2B  $\nabla$ .50



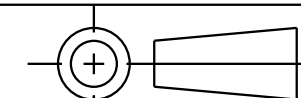
ILC70941105 ECN 3467 REV A



CAD CONTROL  
DRAWING



VEKTEK, INC.  
1334 E. SIXTH AVE. P.O. BOX 625  
EMPORIA, KS. 66801 U.S.A.



A	3467	RELEASE	MJUST	11/6/18
REV	IN ACCORDANCE WITH ECN	EFFECTIVE DATE	REVISED BY	DATE
DRW BY:	MJUST	DRAWING STATUS: <b>Released</b>		
DATE:	10/25/18	PRODUCTION APPROVED FOR RELEASED STATUS ONLY		

70941105	B
REFERENCE MODEL	REF REV
TOLERANCES DO NOT APPLY DIMENSIONS ARE NOMINAL	

MANIFOLD, PARALLEL, D03, 4 VALVE, 5000 PSI
SIZE D
ILC70941105
REV A