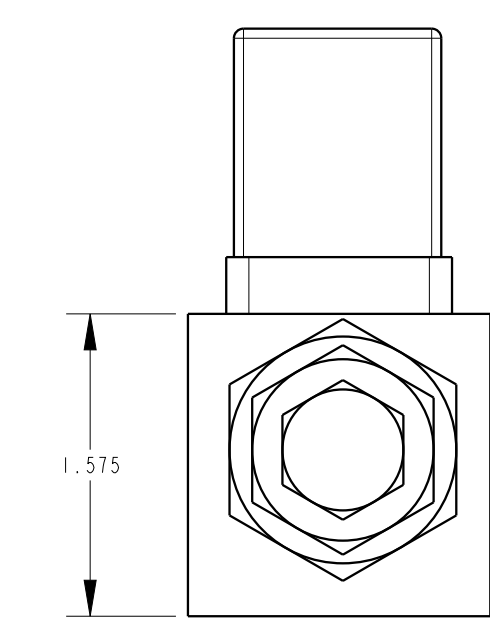

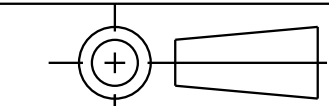


1LC71112501 REV A ECN 5138



CAD CONTROL DRAWING		 VEKTEK, INC. 1334 E. SIXTH AVE. P.O. BOX 625 EMPORIA, KS. 66801 U.S.A.	
			

A	5138	RELEASE	ALS	8/8/23	71112501	B	ASSY, VLV, ALTERNATING PRESS, 2/3, PRV, 30-300 BAR
REV	IN ACCORDANCE WITH ECN	EFFECTIVE DATE	REVISED BY	DATE	REFERENCE MODEL	REF REV	
DRW BY: ALS		DRAWING STATUS: Released			TOLERANCES DO NOT APPLY		SIZE
DATE: 7/24/23		PRODUCTION APPROVED FOR RELEASED STATUS ONLY			DIMENSIONS ARE NOMINAL		D
					1LC71112501		REV A