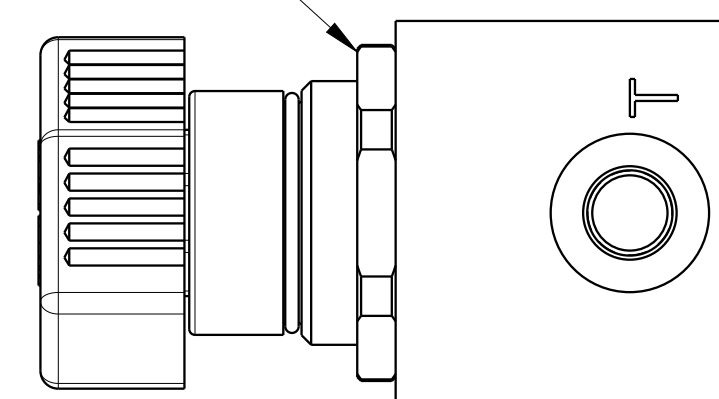
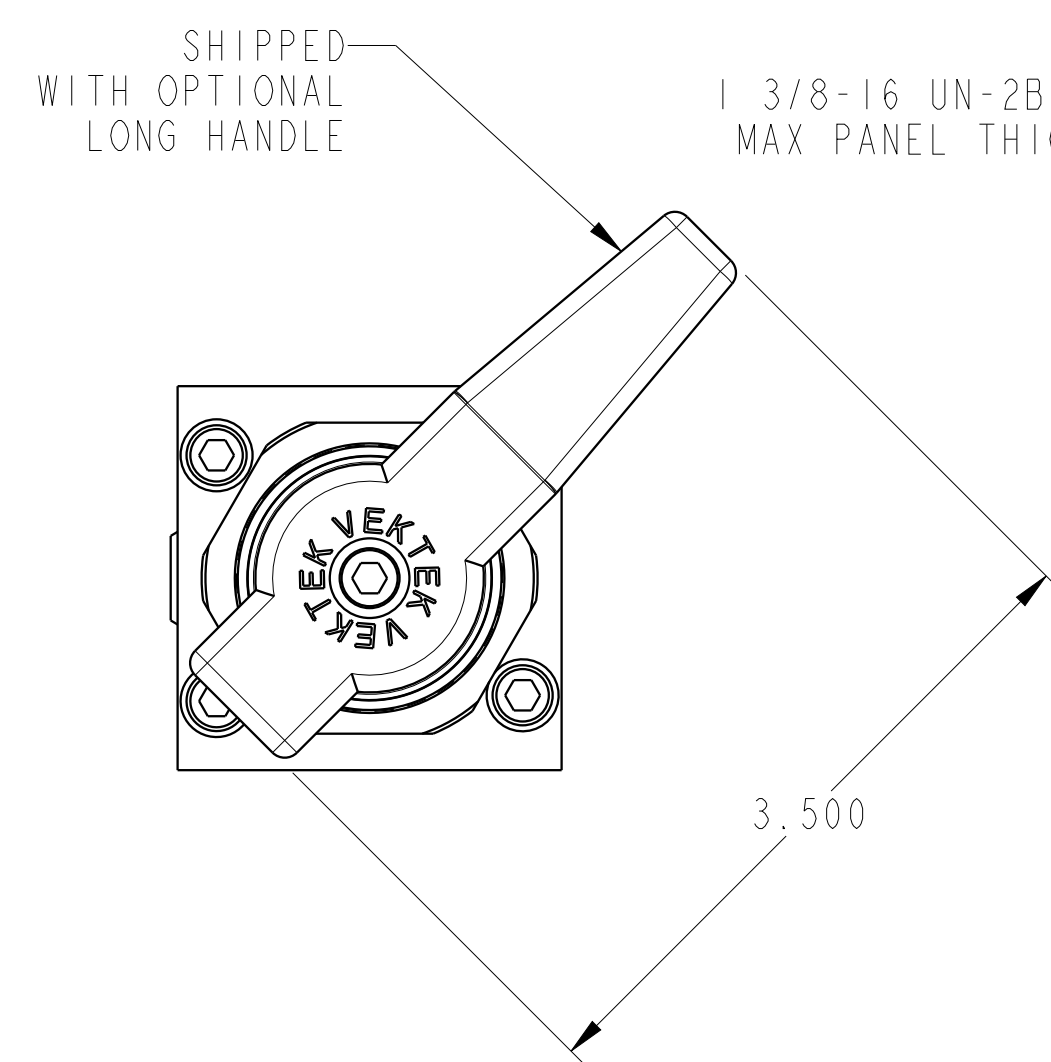
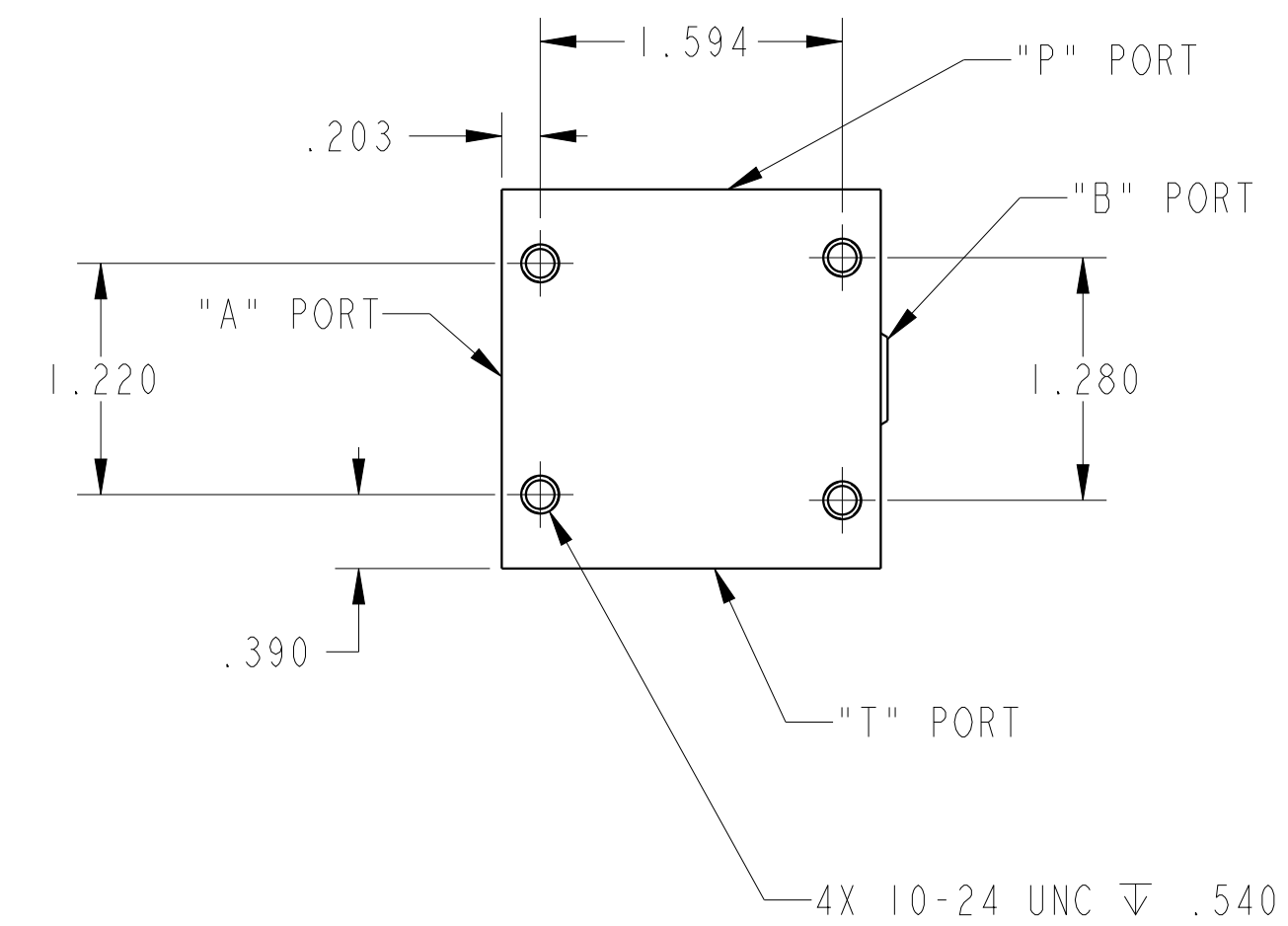
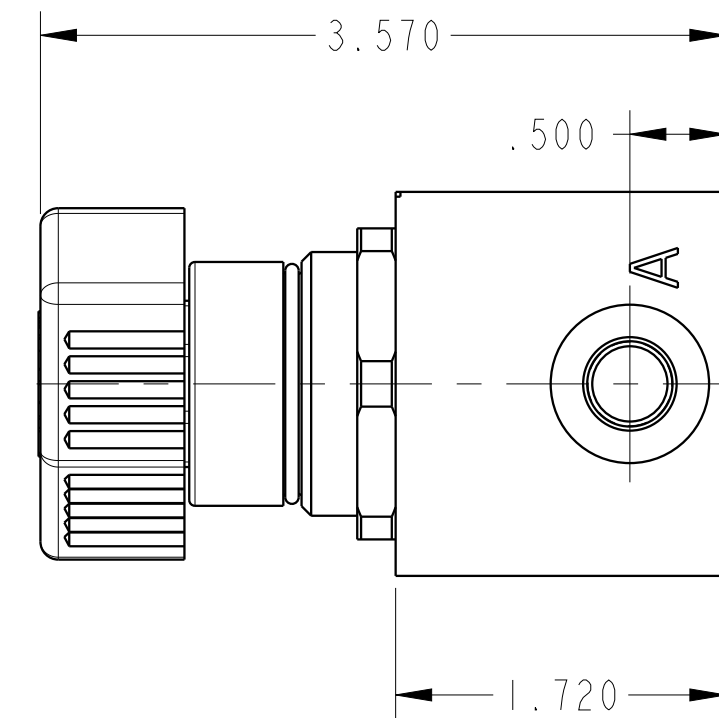
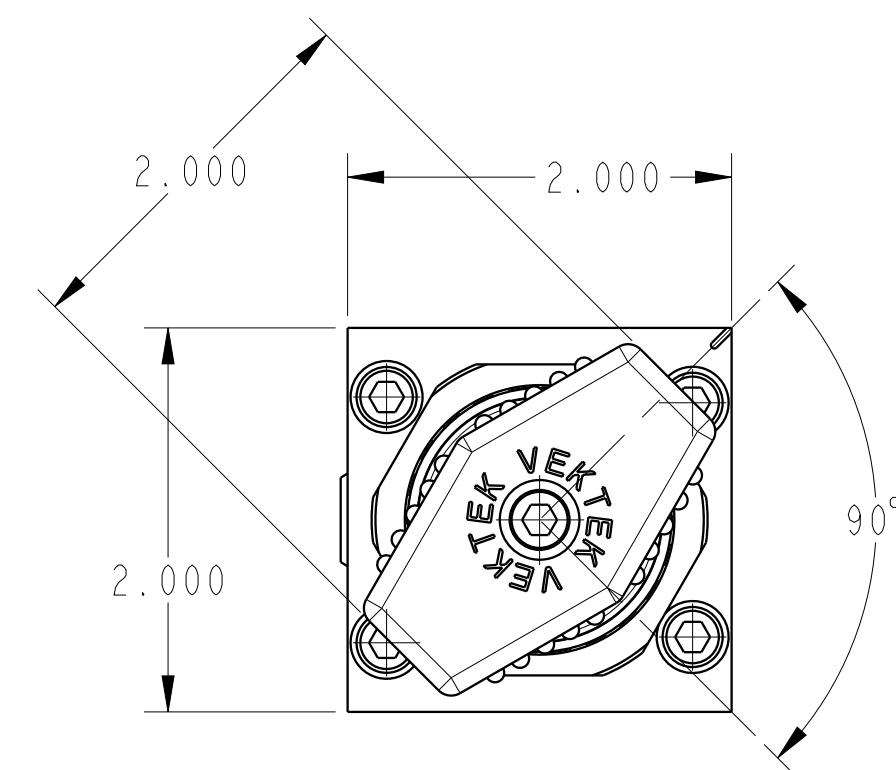


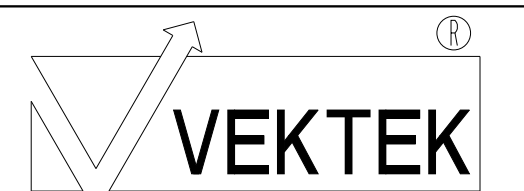
ILC71142205 REV C ECN 4372



1 3/8-16 UN-2B PANEL NUT
MAX PANEL THICKNESS .31

"B" PORT PLUGGED FOR 3/2 CONFIGURATION

CAD CONTROL
DRAWING



VEKTEK, INC.
1334 E. SIXTH AVE. P.O. BOX 625
EMPORIA, KS. 66801 U.S.A.

C	4372	RELEASE	NPETERS	2/9/21	71142205	D	ASSY, VALVE, SAE4, MANUAL, 3/2
REV	IN ACCORDANCE WITH ECN	EFFECTIVE DATE	REVISED BY	DATE	REFERENCE MODEL	REF REV	*****
DRW BY:	ALS	DRAWING STATUS: Released			TOLERANCES DO NOT APPLY DIMENSIONS ARE NOMINAL		SIZE D
DATE:	05/10/19	PRODUCTION APPROVED FOR RELEASED STATUS ONLY			ILC71142205		REV C