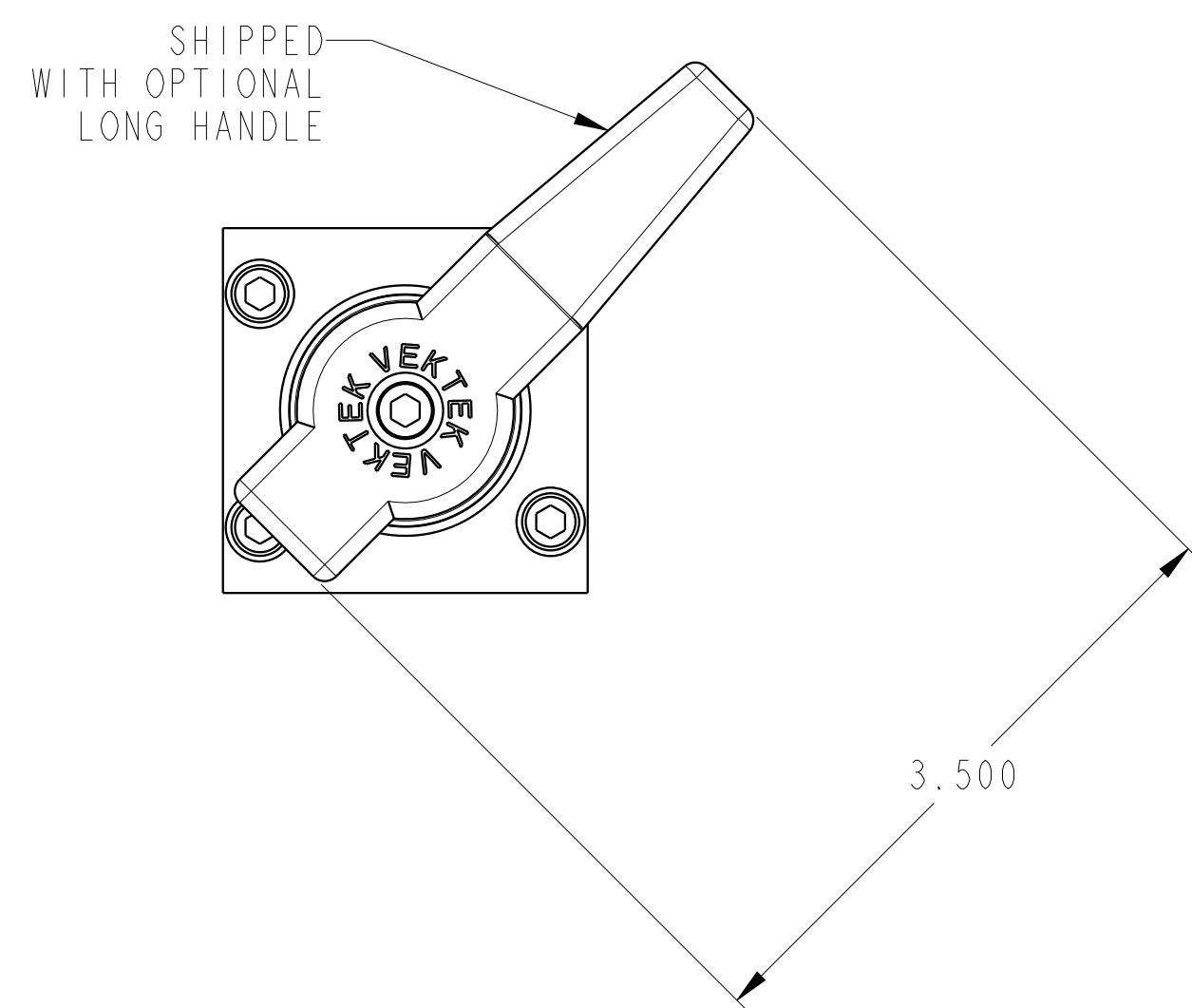
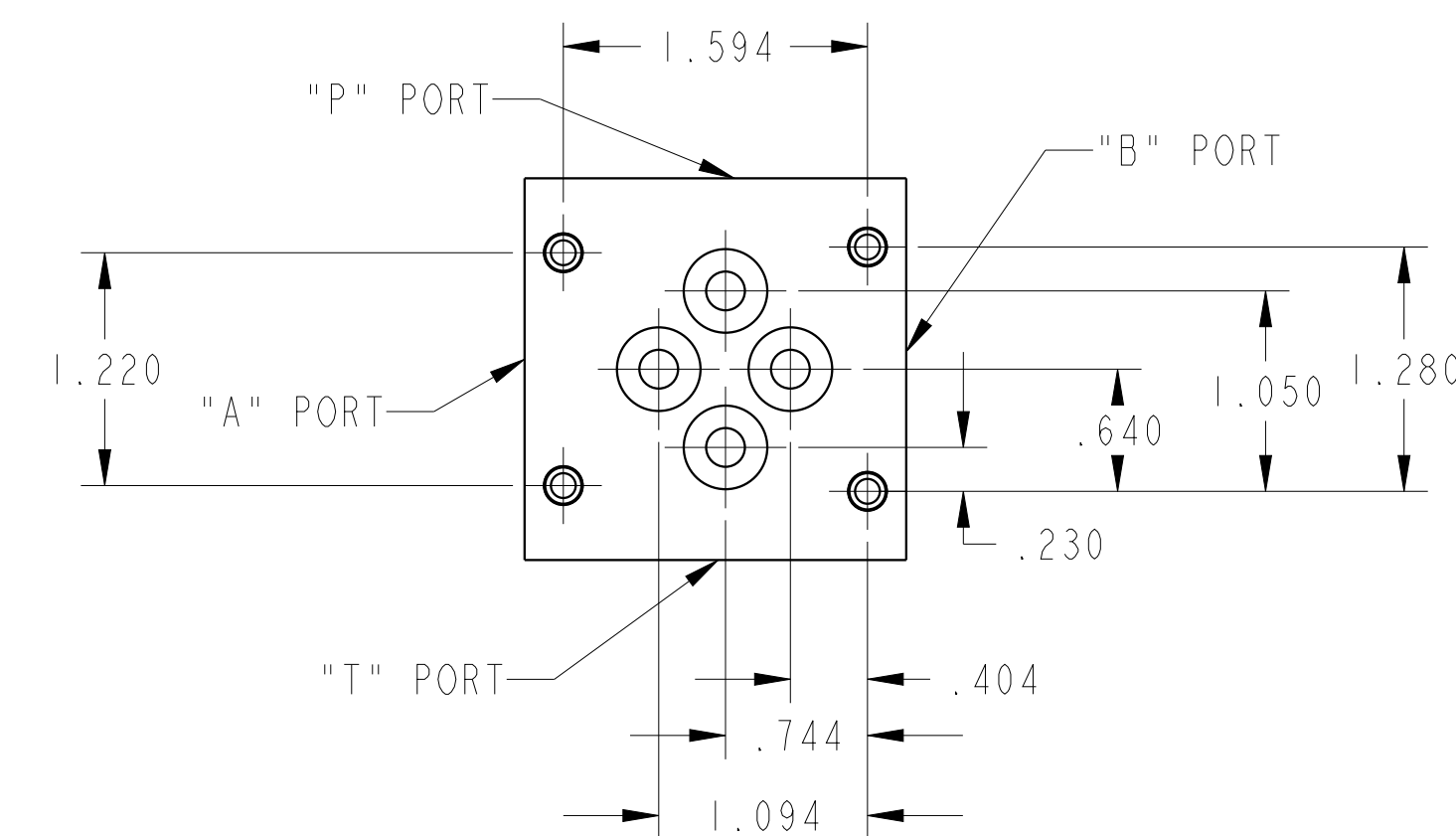
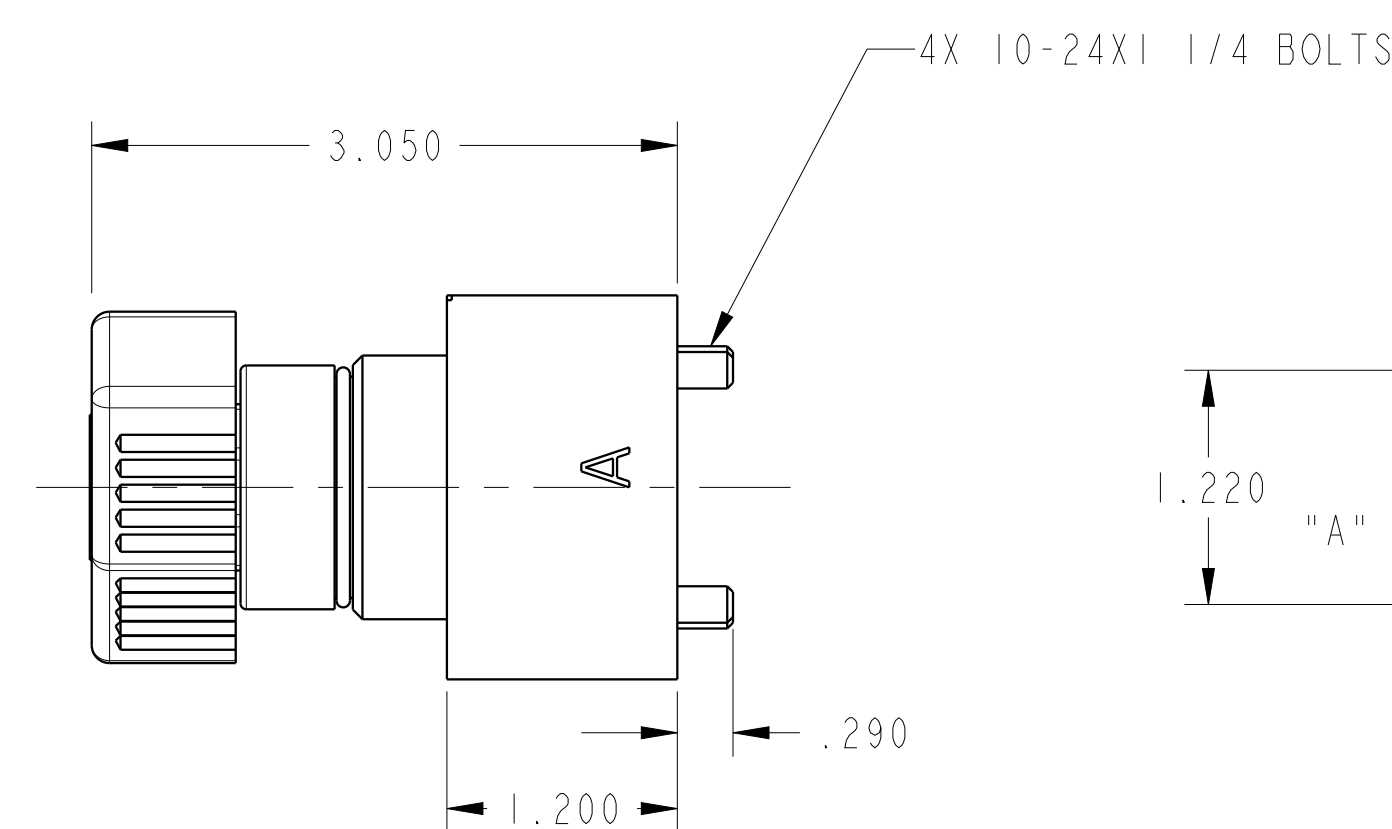
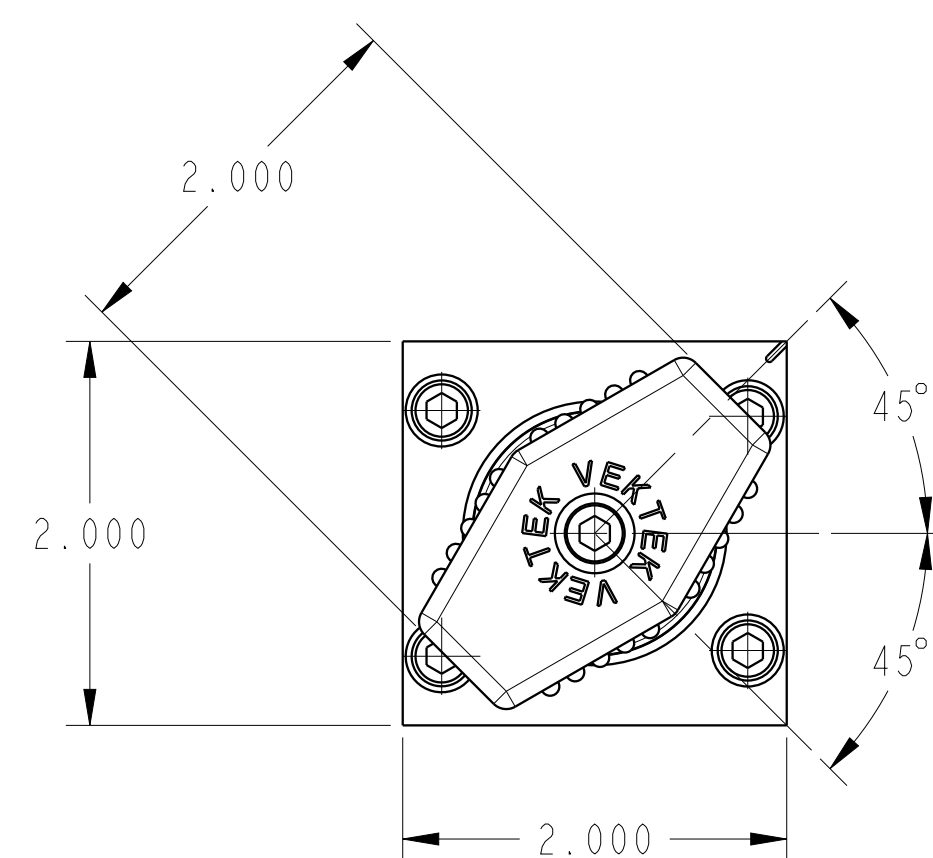
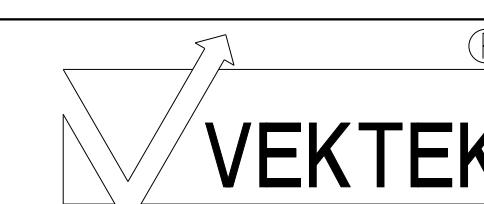


ILC71147402 REV B ECN 4154



CAD CONTROL DRAWING



VEKTEK, INC.
1334 E. SIXTH AVE. P.O. BOX 625
EMPORIA, KS. 66801 U.S.A.

B	4154	RELEASE	NPETERS	8/28/20	71147402	B	ASSY, VALVE, D03, MANUAL, 4/3, PBC
REV	IN ACCORDANCE WITH ECN	EFFECTIVE DATE	REVISED BY	DATE	REFERENCE MODEL	REF REV	*****
DRW BY: ALS DATE: 05/10/19					DRAWING STATUS: Released PRODUCTION APPROVED FOR RELEASED STATUS ONLY		
					TOLERANCES DO NOT APPLY DIMENSIONS ARE NOMINAL		SIZE D ILC71147402 REV B