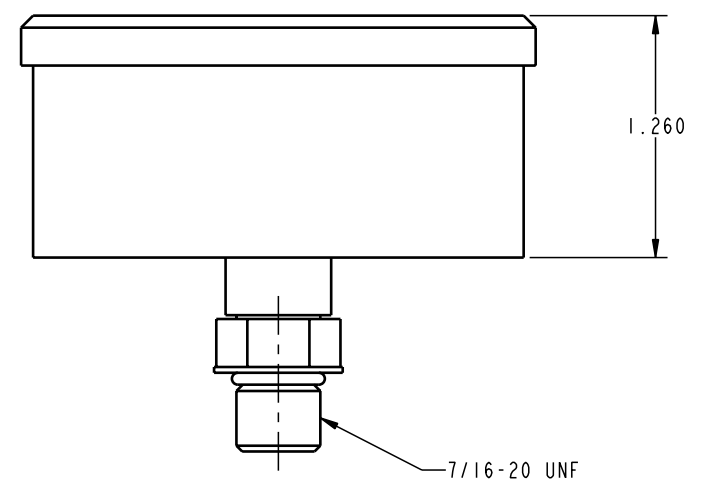
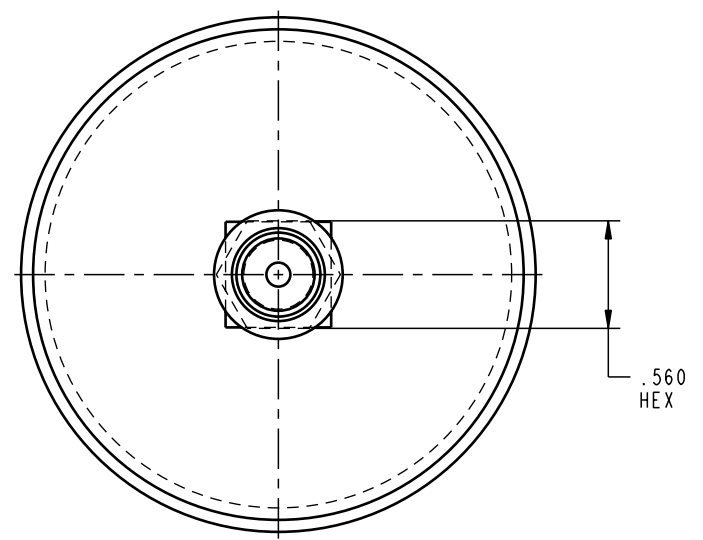


Ø2.680

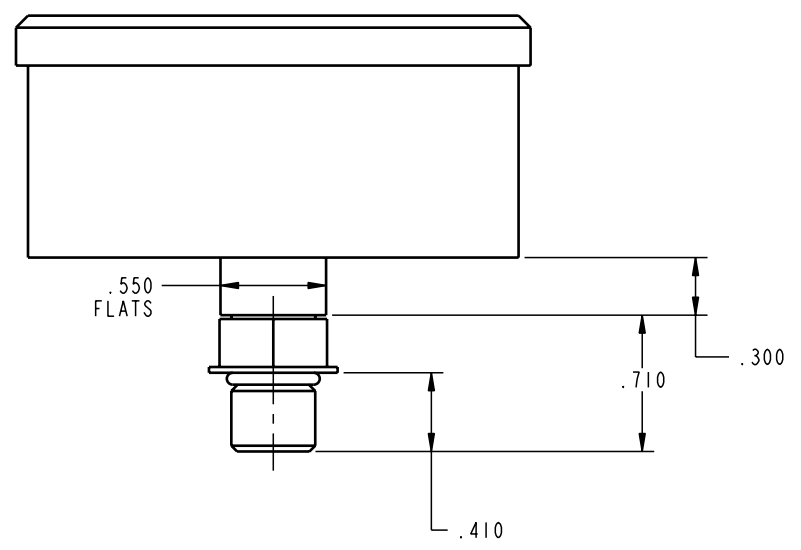
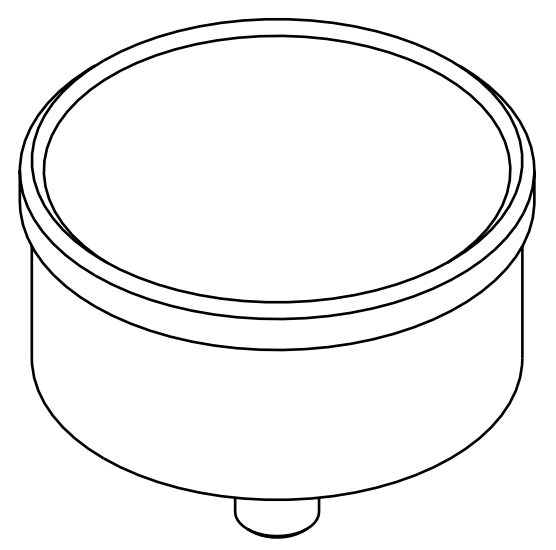


1.260

7/16-20 UNF



.560
HEX





.550
FLATS

.710

.300

.410

ILC72212155 REV A ECN 783

CAD CONTROL DRAWING		 VEKTEK, INC. 1334 E. SIXTH AVE. P.O. BOX 625 EMPORIA, KS. 66801 U.S.A.	
			

A	783	RELEASE	K. ROEMER	05-03-05	72212155	B	GA, PRESS, HYDR, 5000 PSI, BACK WT
REV	IN ACCORDANCE WITH ECN	EFFECTIVE DATE	REVISED BY	DATE	REFERENCE MODEL	REF REV	
DRW BY:	K. ROEMER	DRAWING STATUS: Released			TOLERANCES DO NOT APPLY		SIZE
DATE:	12-04-02	PRODUCTION APPROVED FOR RELEASED STATUS ONLY			DIMENSIONS ARE NOMINAL		B
							ILC72212155
							REV A

FORM FEG036, Rev. A