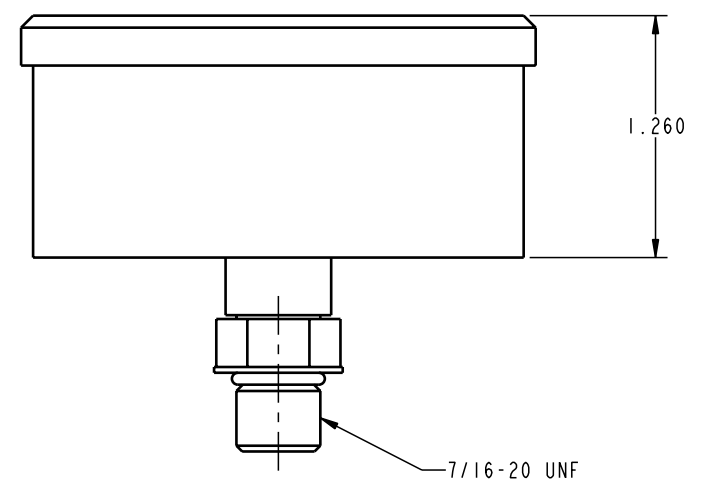
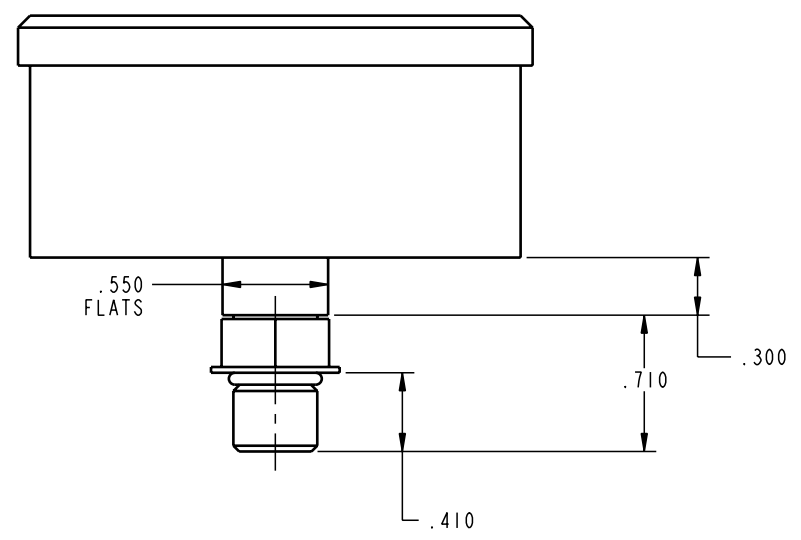


Ø2.680



1.260

7/16-20 UNF

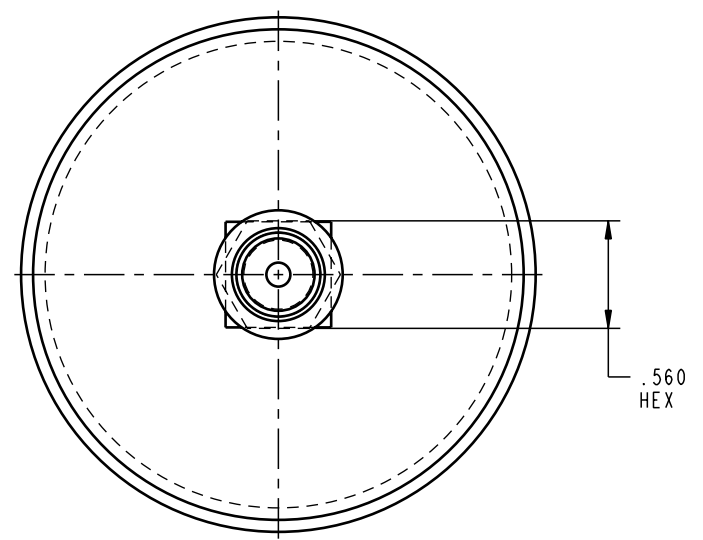
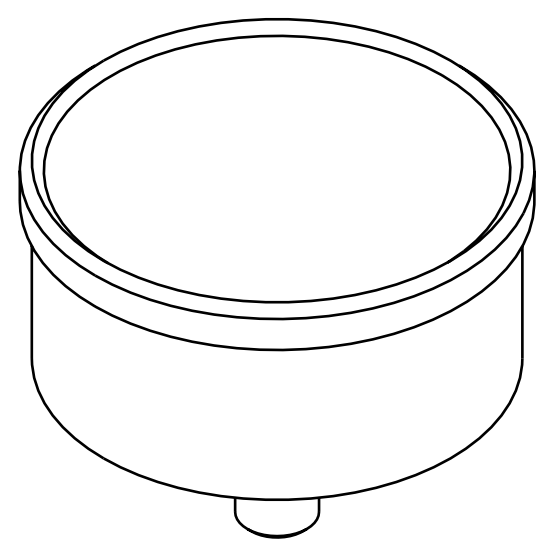


.550  
FLATS

.710


.300

.410



.560  
HEX

ILC72212165 REV A ECN 783

CAD CONTROL DRAWING		
	<small>VEKTEK, INC. 1334 E. SIXTH AVE. P.O. BOX 625 EMPORIA, KS. 66801 U.S.A.</small>	

A	783	RELEASE	K. ROEMER	05-03-05	72212165	C	GA, PRESS, HYDR, 10000 PSI, BACK MT
REV	IN ACCORDANCE WITH ECN	EFFECTIVE DATE	REVISED BY	DATE	REFERENCE MODEL	REF REV	
DRW BY:	K. ROEMER	DRAWING STATUS: <b>Released</b>			TOLERANCES DO NOT APPLY DIMENSIONS ARE NOMINAL		SIZE B
DATE:	12-04-02	PRODUCTION APPROVED FOR RELEASED STATUS ONLY					ILC72212165 REV A

FORM FEG036, Rev. A