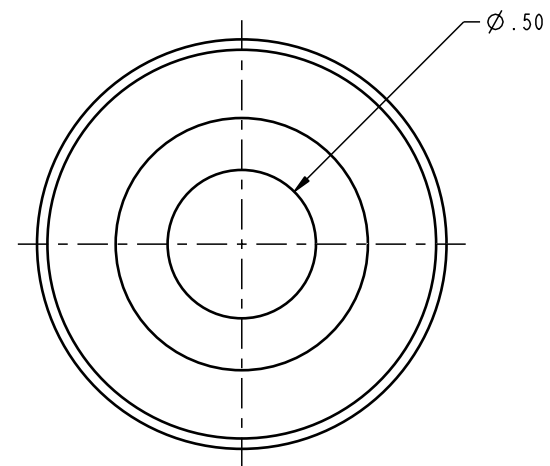


ILC81070801 REV A ECN 1377



CAD CONTROL DRAWING



VEKTEK, INC.
1334 E. SIXTH AVE. P.O. BOX 625
EMPORIA, KS. 66801 U.S.A.



A	1377	RELEASE	K. ROEMER	08-23-05	81070801	C	SHIELD, WS, FA, 11KN/2500
REV	IN ACCORDANCE WITH ECN	EFFECTIVE DATE	REVISED BY	DATE	REFERENCE MODEL	REF REV	*****
DRW BY:	K. ROEMER	DRAWING STATUS: Released			TOLERANCES DO NOT APPLY DIMENSIONS ARE NOMINAL		SIZE B
DATE:	08-23-05	PRODUCTION APPROVED FOR RELEASED STATUS ONLY					ILC81070801 REV A

FORM FEG036, Rev. A

SHEET 1 OF 1