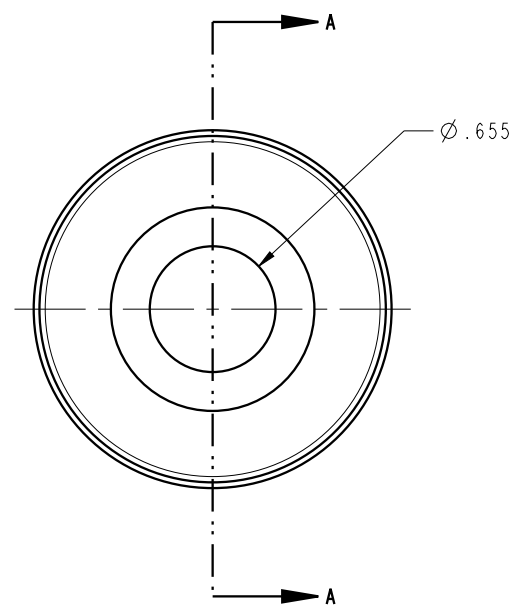
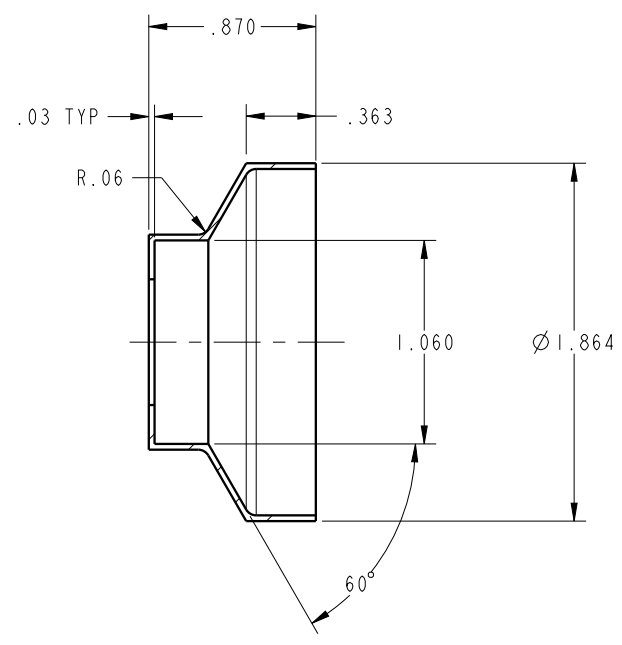

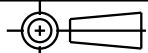


ILC81070901 REV A 4223



<b>CAD CONTROL DRAWING</b>		 VEKTEK, INC. 1334 E. SIXTH AVE. P.O. BOX 625 EMPORIA, KS. 66801 U.S.A.	
			

A	4223	RELEASE	ALS	8/20/20	81070901	A	SHIELD, HC, WS, FA, 8000
REV	IN ACCORDANCE WITH ECN	EFFECTIVE DATE	REVISED BY	DATE	REFERENCE MODEL	REF REV	
DRW BY:	ALS	<b>DRAWING STATUS: Released</b>			TOLERANCES DO NOT APPLY DIMENSIONS ARE NOMINAL		SIZE B
DATE:	8/20/20	PRODUCTION APPROVED FOR RELEASED STATUS ONLY					ILC81070901 REV A

FORM FEG036, Rev. B