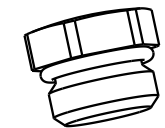


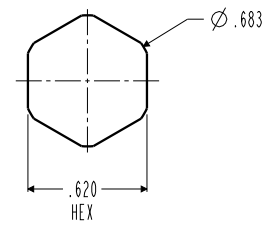
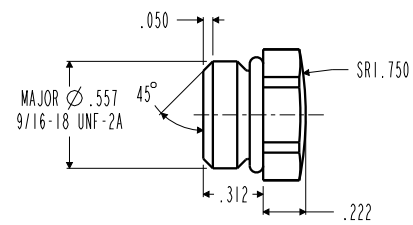
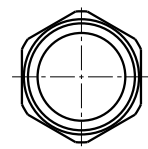
1 2 3 4

D  
C  
B  
A

D  
C  
B  
A



ILC91040830 REV A ECN 5858



<b>CAD CONTROL DRAWING</b>			
		VEKTEK, INC. 1334 E. SIXTH AVE. P.O. BOX 625 EMPORIA, KS. 66801 U.S.A.	

A	5858	RELEASE	JDW	12/04/25	91040830	A	ASSY, BOLT, CONTACT, SPHERICAL, WS, DA, CGS, 2750
REV	IN ACCORDANCE WITH ECN	EFFECTIVE DATE	REVISED BY	DATE	REFERENCE MODEL	REF REV	
DRW BY:	JDW	DRAWING STATUS: <b>Released</b>			TOLERANCES DO NOT APPLY DIMENSIONS ARE NOMINAL		SIZE B
DATE:	12/04/25	PRODUCTION APPROVED FOR RELEASED STATUS ONLY			ILC91040830		REV A

1 2 3 4

FORM FEG036, Rev. B

SHEET 1 OF 1