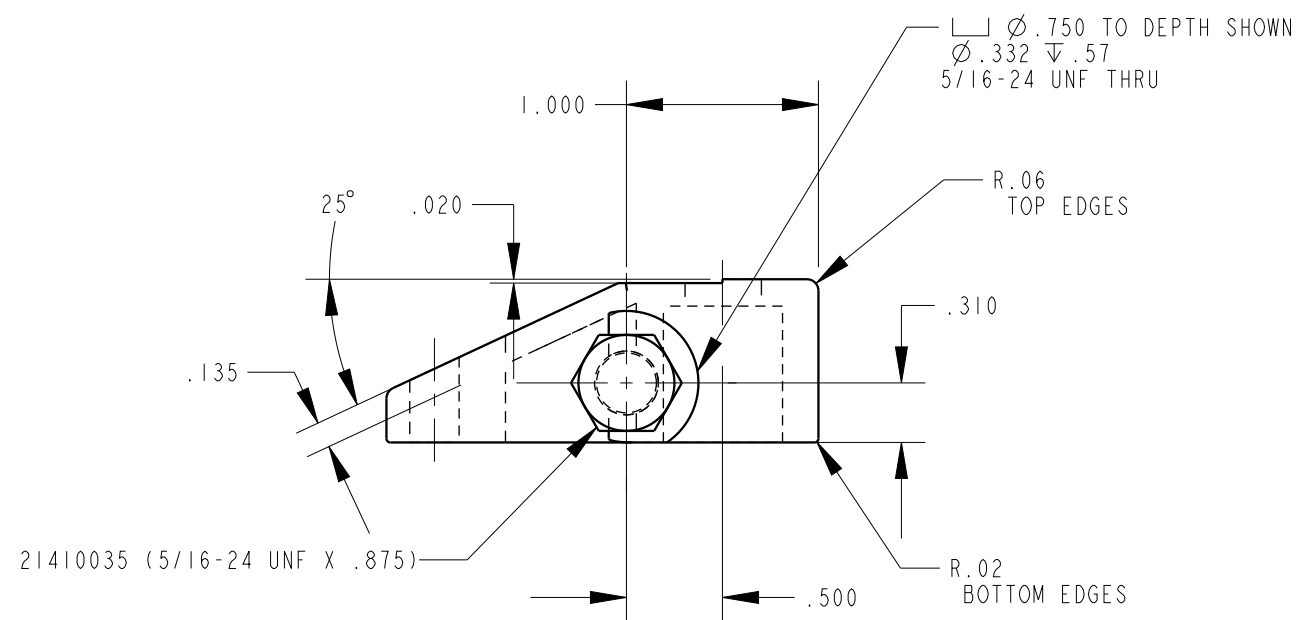


ILC91520901 REV B ECN 4064



CAD CONTROL DRAWING



VEKTEK, INC.
1334 E. SIXTH AVE. P.O. BOX 625
EMPORIA, KS. 66801 U.S.A.

B	4064	RELEASE	NPETERS	1/27/20	91520901	N	ARM, SC, SHORT, 1100
REV	IN ACCORDANCE WITH ECN	EFFECTIVE DATE	REVISED BY	DATE	REFERENCE MODEL	REF REV	''''
DRW BY:	K. ROEMER	DRAWING STATUS: Released			TOLERANCES DO NOT APPLY DIMENSIONS ARE NOMINAL		SIZE B
DATE:	07-31-02	PRODUCTION APPROVED FOR RELEASED STATUS ONLY			ILC91520901		REV B

FORM FEG036, Rev. B

SHEET 1 OF 1