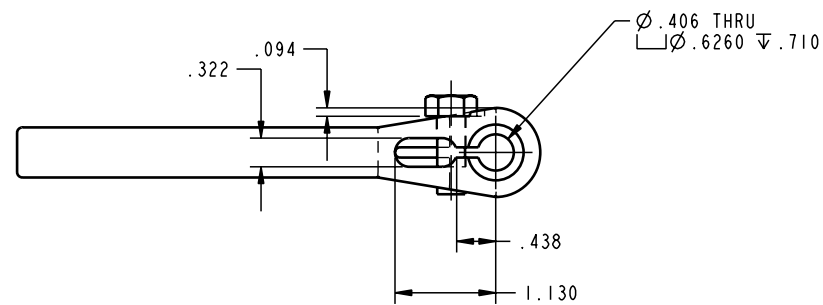


ILC91520902 REV A ECN 739



CAD CONTROL  
DRAWING



VEKTEK, INC.  
1334 E. SIXTH AVE. P.O. BOX 625  
EMPORIA, KS. 66801 U.S.A.

A	739	RELEASE	K. ROEMER	03-18-05	91520902	K	ARM, SC, EXT, 1100
REV	IN ACCORDANCE WITH ECN	EFFECTIVE DATE	REVISED BY	DATE	REFERENCE MODEL	REF REV	
DRW BY:	K. ROEMER	DRAWING STATUS: <b>Released</b>			TOLERANCES DO NOT APPLY DIMENSIONS ARE NOMINAL		SIZE D
DATE:	07-23-02	PRODUCTION APPROVED FOR RELEASED STATUS ONLY			ILC91520902		REV A

FORM FEG036, Rev. A

SHEET 1 OF 1