

1

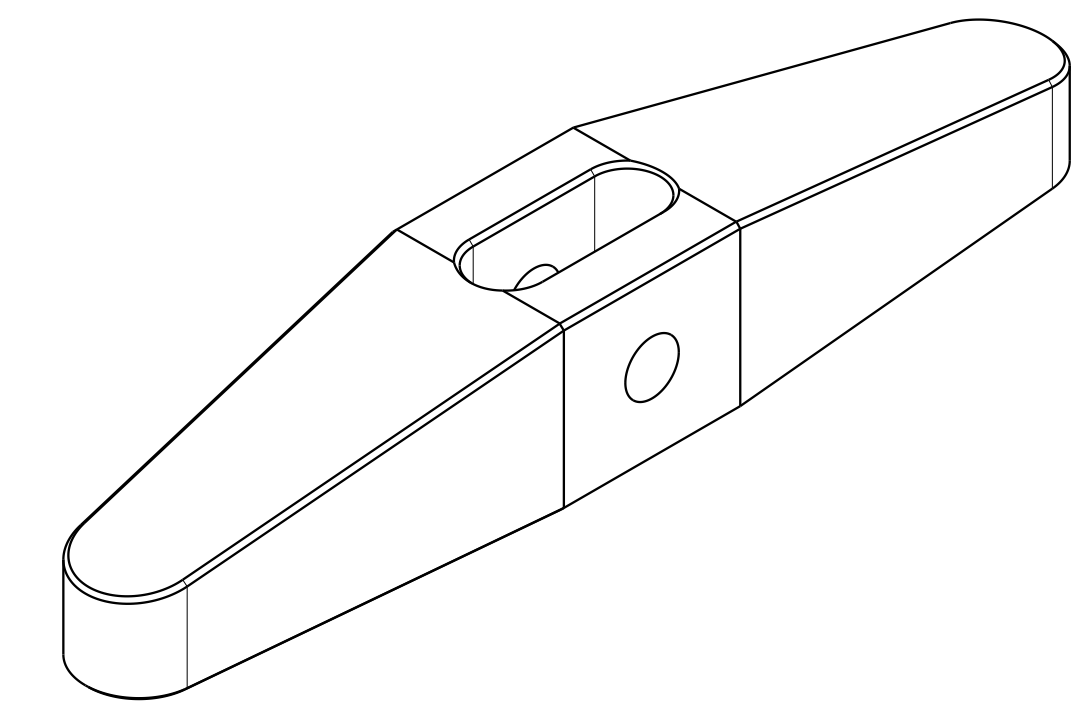
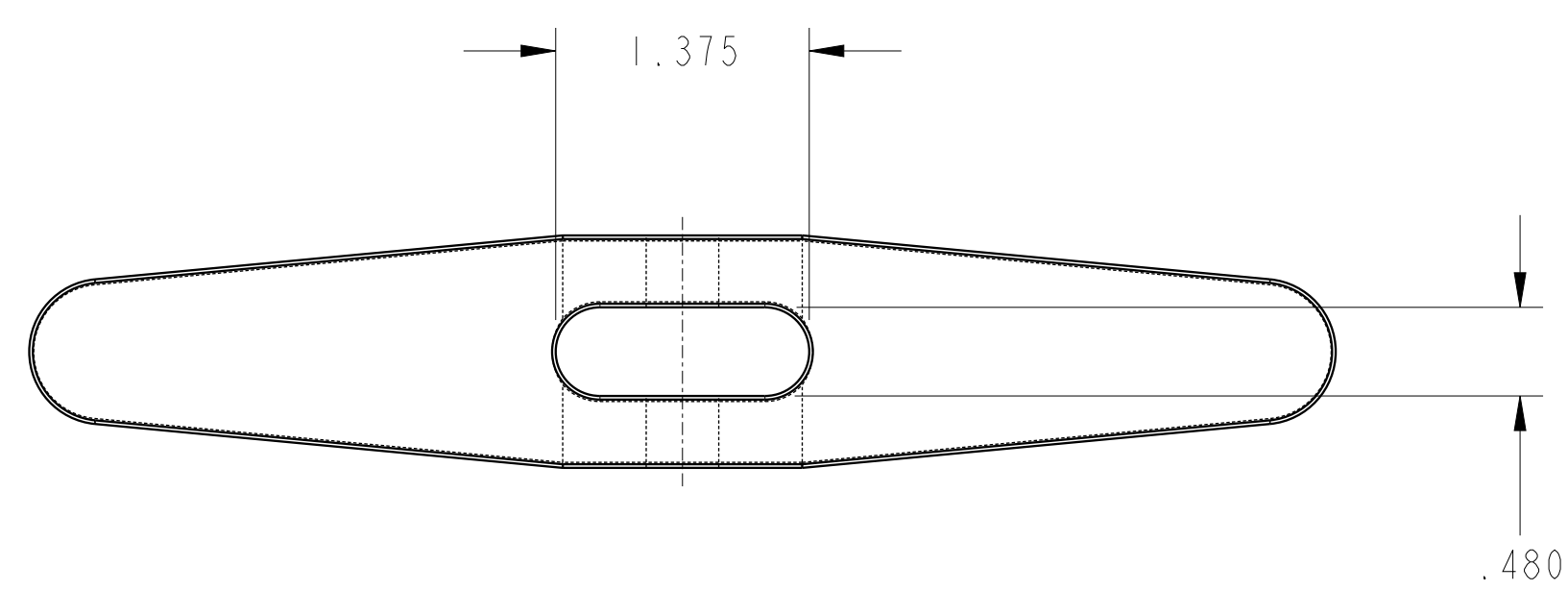
2

3

4

D

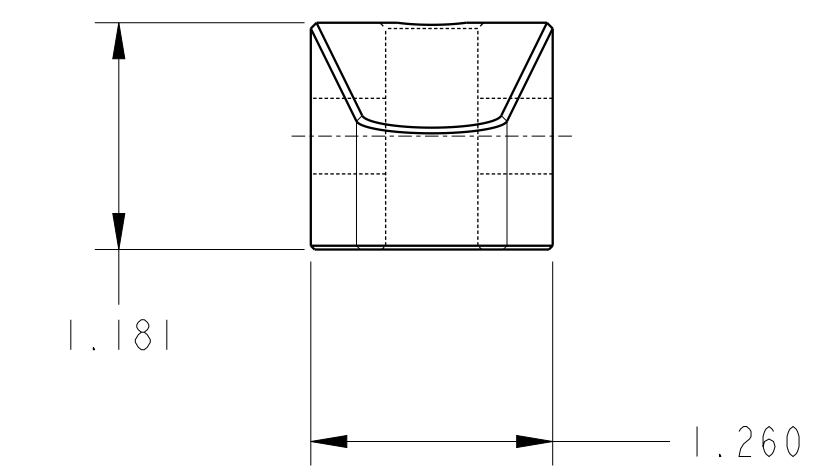
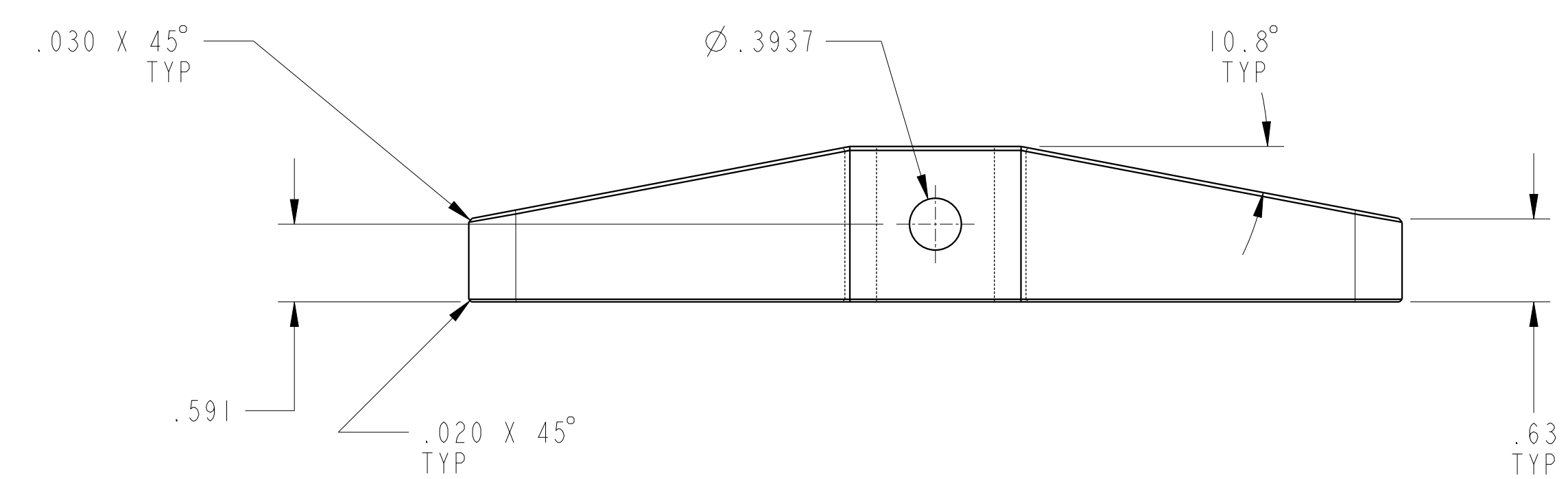
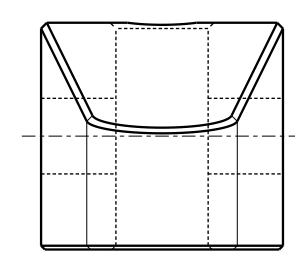
D



1LC91521320 REV A ECN 5880

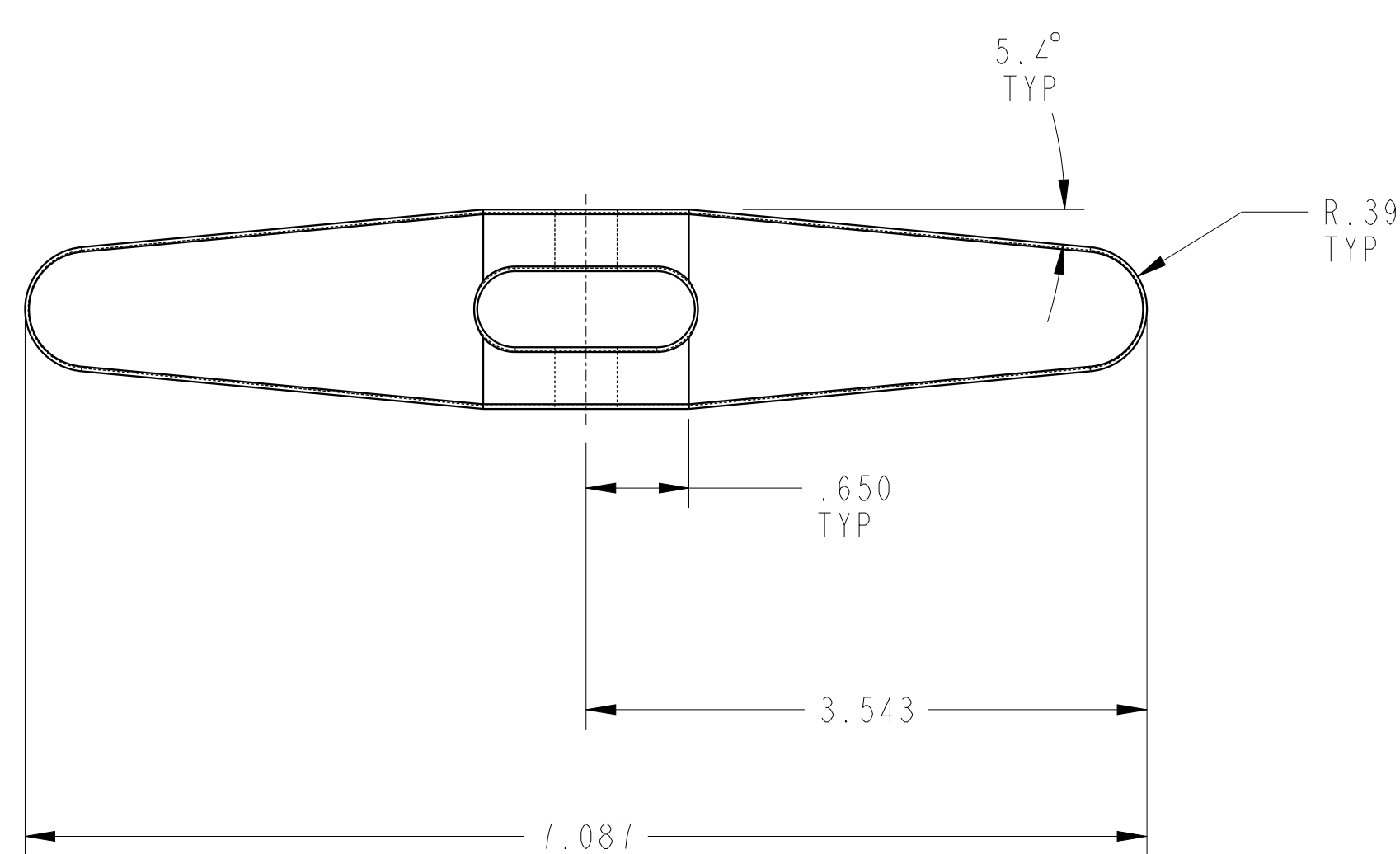
C

C



B

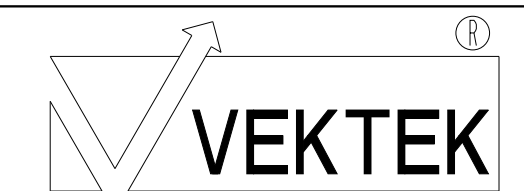
B



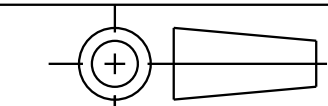
A

A

CAD CONTROL DRAWING



VEKTEK, INC.  
1334 E. SIXTH AVE. P.O. BOX 625  
EMPORIA, KS. 66801 U.S.A.



A	5880	RELEASE	NPETERS	1/13/26	91-5213-20	A	ARM, SC, CLEVIS, 3100
REV	IN ACCORDANCE WITH ECN	EFFECTIVE DATE	REVISED BY	DATE	REFERENCE MODEL	REF REV	*****
DRW BY:	NPETERS	DRAWING STATUS: Released			TOLERANCES DO NOT APPLY	UNITS	SIZE
DATE:	1/13/26	PRODUCTION APPROVED FOR RELEASED STATUS ONLY			DIMENSIONS ARE NOMINAL	mm (inch)	D
							1LC91521320
							FORM FEG036, Rev. C