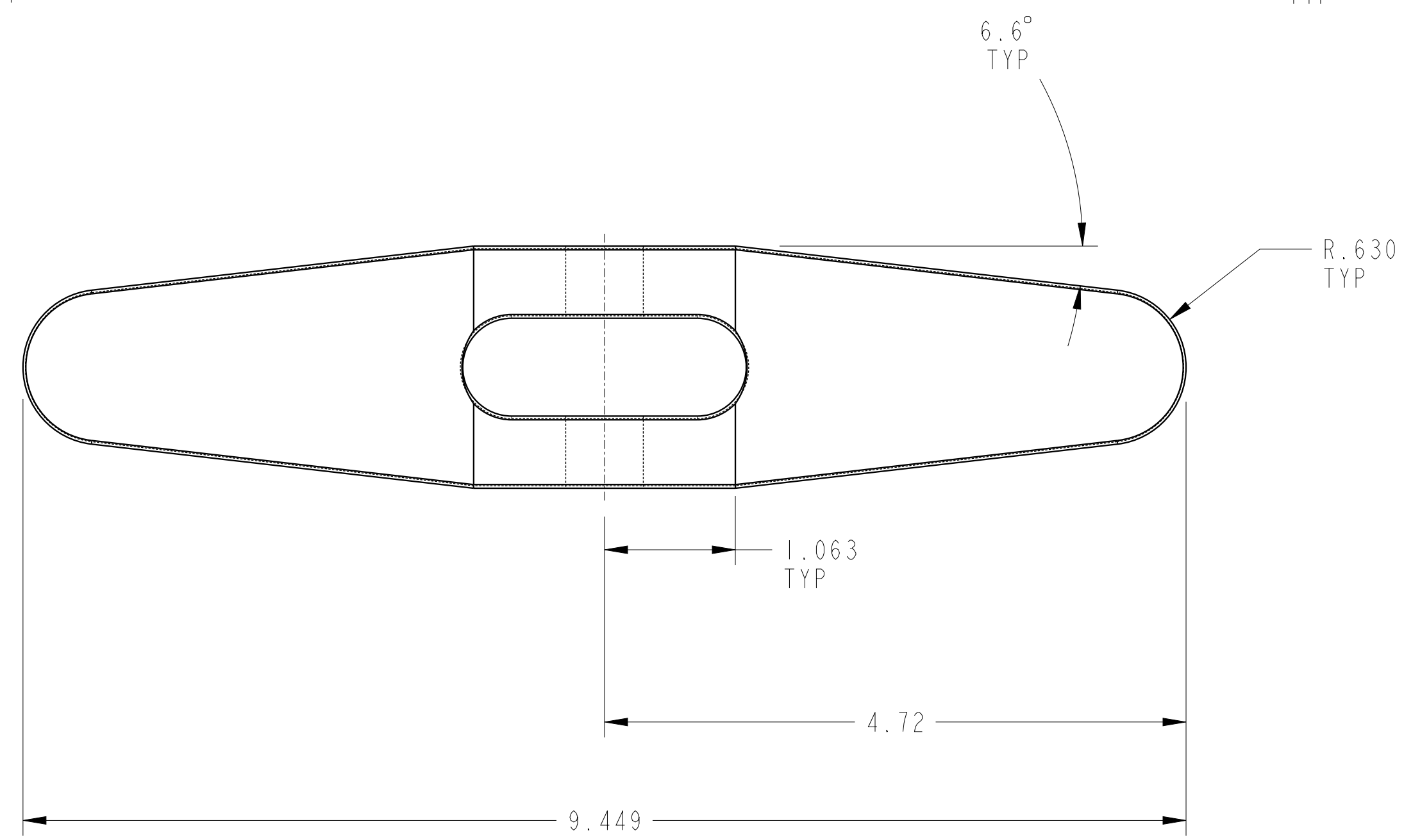
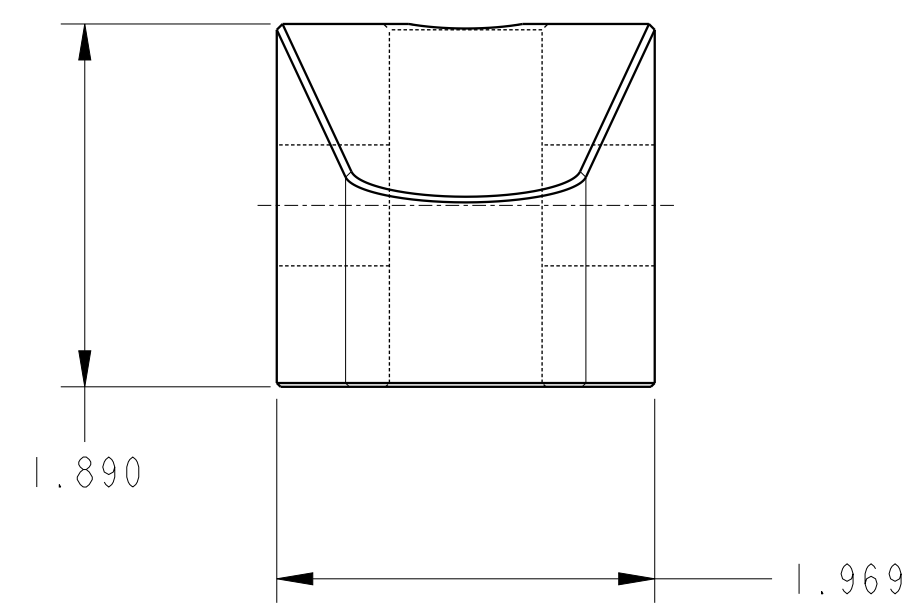
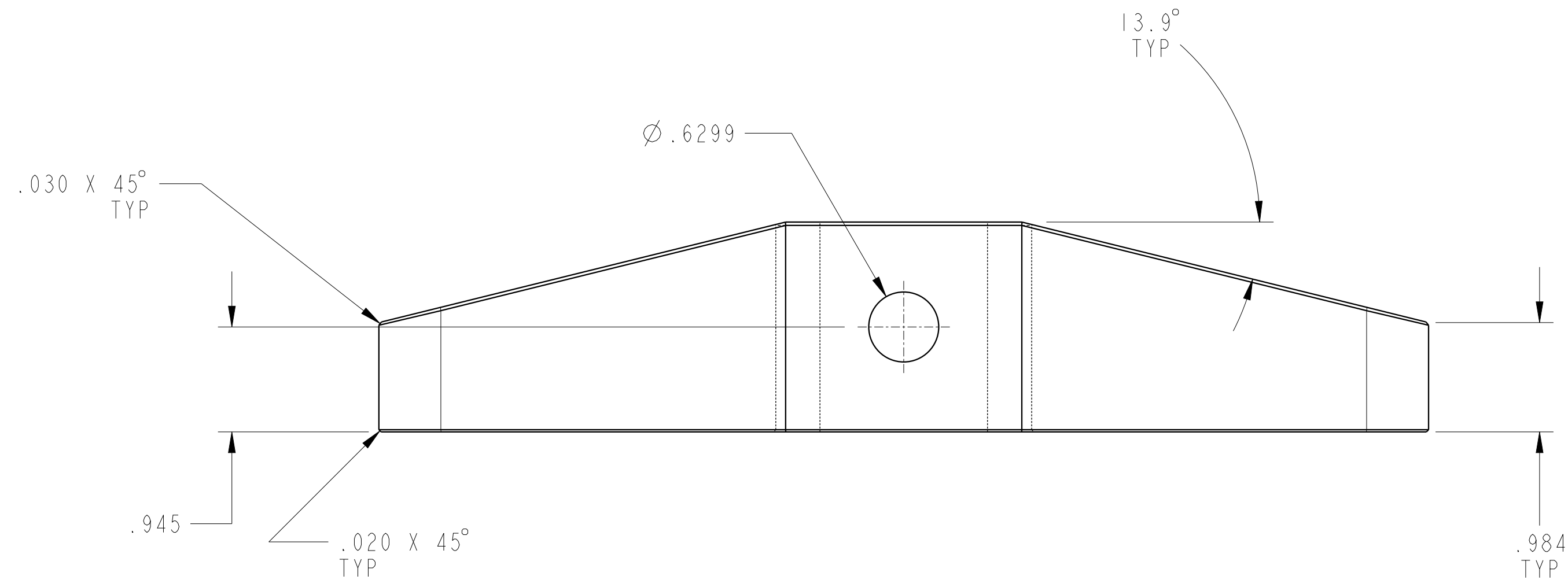
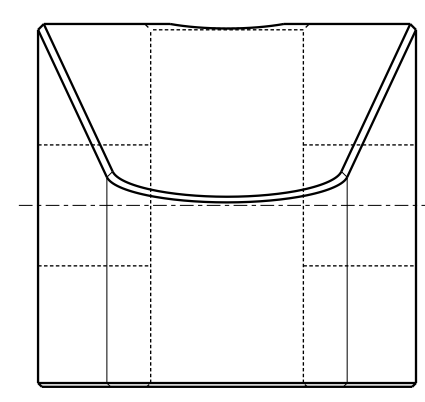
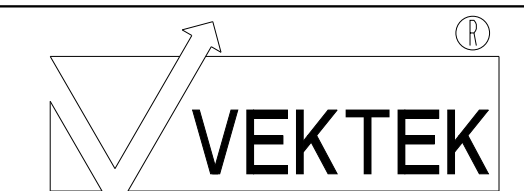


ILC91522120 REV A ECN 5880



**CAD CONTROL
DRAWING**



VEKTEK, INC.
1334 E. SIXTH AVE. P.O. BOX 625
EMPORIA, KS. 66801 U.S.A.

A	5880	RELEASE	NPETERS	1/13/26
REV	IN ACCORDANCE WITH ECN	EFFECTIVE DATE	REVISED BY	DATE
DRW BY:	NPETERS	DRAWING STATUS: Released		
DATE:	1/13/26	PRODUCTION APPROVED FOR RELEASED STATUS ONLY		

91-5221-20	A	ARM, SC, CLEVIS, 8800
REFERENCE MODEL	REF REV	*****
TOLERANCES DO NOT APPLY DIMENSIONS ARE NOMINAL	UNITS mm (inch)	SIZE D

ILC91522120	REV A
-------------	----------