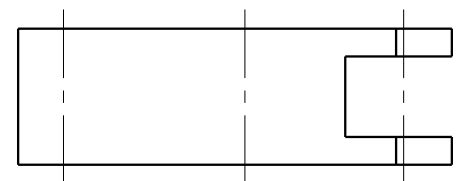
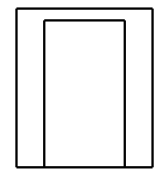
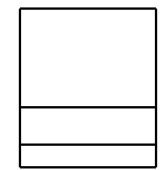
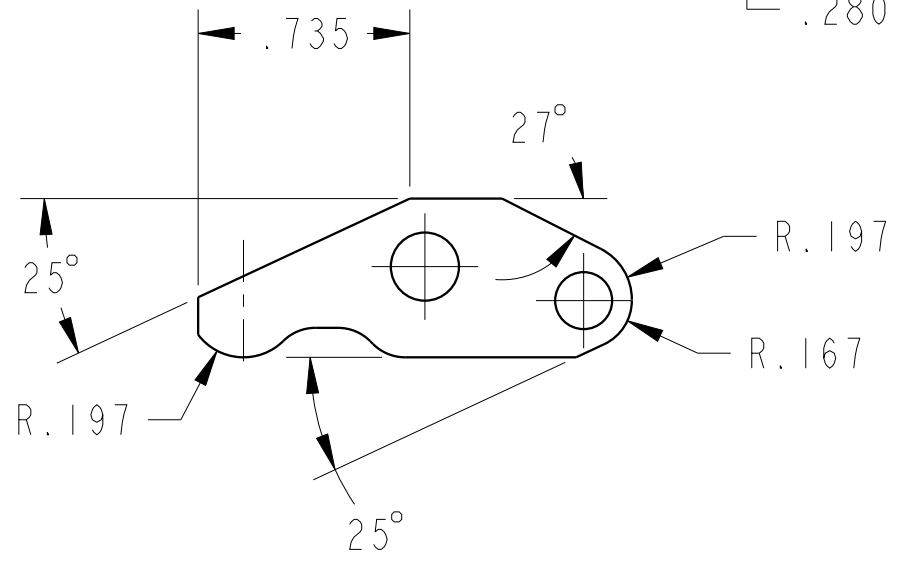
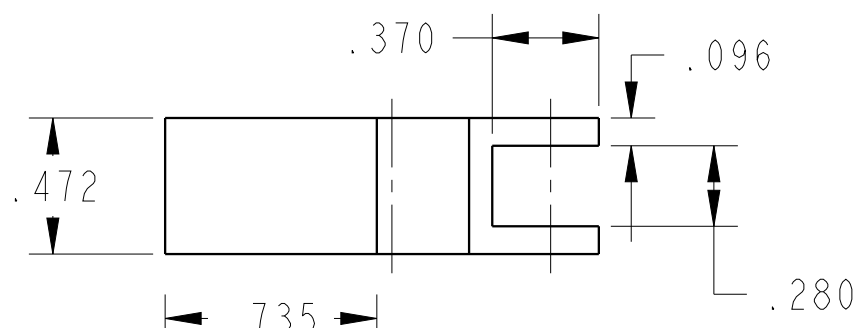


ILC91611520 REV B ECN4344



<b>CAD CONTROL DRAWING</b>		 VEKTEK, INC. 1334 E. SIXTH AVE. P.O. BOX 625 EMPORIA, KS. 66801 U.S.A.	

B	4344	RELEASE	ALS	12/29/20	91611520	A	LEVER, TL360-TWIN, 1100 LB
REV	IN ACCORDANCE WITH ECN	EFFECTIVE DATE	REVISED BY	DATE	REFERENCE MODEL	REF REV	*****
DRW BY:	A.THOMSEN	<b>DRAWING STATUS: Released</b>			TOLERANCES DO NOT APPLY DIMENSIONS ARE NOMINAL		SIZE B
DATE:	8-JUN-2020	PRODUCTION APPROVED FOR RELEASED STATUS ONLY			ILC91611520		REV B

FORM FEG036, Rev. B